

# Solenoid Valves SV3-12-O

www: [www.salushydraulics.pl](http://www.salushydraulics.pl)  
 e-mail: [pl@salushydraulics.pl](mailto:pl@salushydraulics.pl)  
 shop/sklep: [www.salushydraulics.pl/sklep/](http://www.salushydraulics.pl/sklep/)

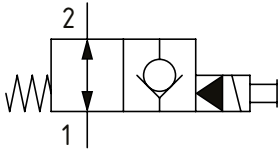


Solenoid Valve, 2-way, Poppet Type, Normally Open, Pilot Operated with Reverse Free Flow  
**210 bar [3000 psi] • 114 l/min [30 USgpm]**

## OPERATION AND DESCRIPTION

This is a 2-way, 2-position, poppet type, pilot operated, normally open solenoid valve. When de-energized, flow can take place from port 2 to 1 and from 1 to 2. In its energized condition, flow can take place from port 1 to 2 but is blocked in the other direction. Leakage is kept to a minimum due to the poppet design. These valves can be used to hold loads in position when energized, interrupt a pressure line where flow normally passes in both directions, or bypass excess oil to tank in a fail-safe way.

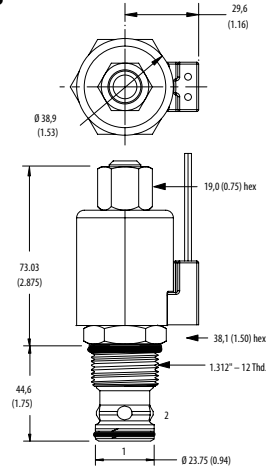
## SCHEMATIC 02-161311, SV3-12-0-0-00



## DIMENSIONS

mm [in]

Coil nut torque  
 5-8 Nm [4-6 ft. lbs.]

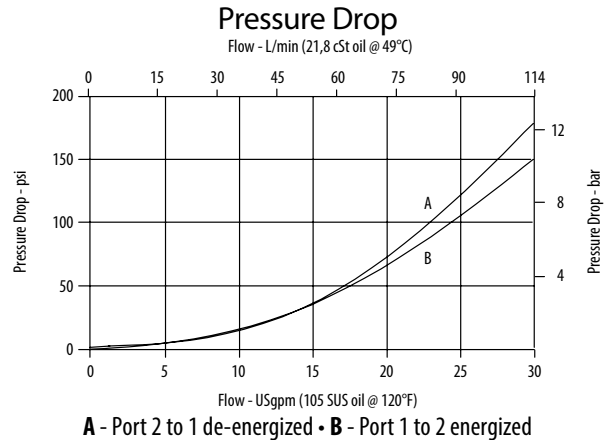


Installation torque  
 81-95 Nm [60-70 ft. lbs.]

## PERFORMANCE DATA

|                       |                                   |
|-----------------------|-----------------------------------|
| <b>Rated Pressure</b> | <b>210 bar [3000 psi]</b>         |
| <b>Rated flow</b>     | <b>114 l/min [30 US gpm]</b>      |
| <b>Leakage</b>        | 5 drops/ min @ 210 bar [3000 psi] |
| <b>Coil Options</b>   | J series                          |
| <b>Weight</b>         | 0.34 kg [0.74 lb]                 |
| <b>Cavity</b>         | C-12-2/C-12-2U                    |

## PERFORMANCE CURVES



## MODEL CODE

**SV3 - 12 - V - O - P - A - 4G - U - 12D - G**

### Seal Option

| Code            | Seal kit  |
|-----------------|-----------|
| Omit - Buna - N | 02-165889 |
| V - Viton       | 02-165888 |

### Manual Override Option

Omit - No manual override  
 P - Push type  
 S - Screw type

### Housing Material

Omit - No housing  
 A - Aluminum

### Housing

| Code | Ports      | C-12-2 Aluminum Heavy Duty | C-12-2U Aluminum Heavy Duty |
|------|------------|----------------------------|-----------------------------|
| 0    | No Housing |                            |                             |
| 4G   | 1/2" BSP   | 02-161118                  | 02-161116                   |
| 6G   | 3/4" BSP   | 02-161117                  | 02-161115                   |
| 10T  | #10 SAE    | 02-160640                  | 02-160641                   |
| 12T  | #12 SAE    | 02-160644                  | 02-160645                   |

\* Aluminum bodies are to be used for pressures less than 210 bar [3000 psi].

\* Additional housings available

### Cavity

Omit - Cavity without undercut/No housing  
 U - Cavity with undercut

### Connector Type

Omit - No coil  
 G - ISO 4400 DIN 43650  
 Q - Spade terminals  
 W - Flying lead  
 N - Deutsch (DC only)  
 Y - Amp JR (DC only)  
 D - Metripack 150 male (DC only)  
 J - Metripack 280 male (DC only)

### Coil Voltage

| Code | Coil Voltage                       |
|------|------------------------------------|
| 00   | No Coil, nut included (p/n 565559) |
| 12D  | 12 VDC                             |
| 24D  | 24 VDC                             |
| 115A | 115 VAC**                          |
| 230A | 230 VAC**                          |
| 12B  | 2VDC/w diode*                      |
| 24B  | 24 VDC/w diode*                    |

\*Optional arc suppression diode

\*\*Internally rectified

\*\*\*Other voltage options available