

## Coils and Electronics S series

20W ToughCoil

www:

www.salushydraulics.pl

e-mail:

pl@salushydraulics.pl

shop/sklep:

www.salushydraulics.pl/sklep/

### ■ PERFORMANCE DATA

Duty cycle	100% at 110% of rated voltage
Magnet wire insulation	U.L. class N, 200°C [392°F] NEMA pub. No. MW 1000, section MW 35 – C [single]
Ambient temperature	100°C [212°F] continuous @ rated voltage
Input Voltage Range	85% to 110% of rated voltage
<b>UL Rated (certificate available upon request)</b>	

### ■ ENVIRONMENT PROTECTION

Rating	Connector Type
IP65	G0*
IP67	Y0, W0
IP69K	No, D0, J0
Thermal shock dunk	W0 <sup>1</sup> , NO, DO, JO

<sup>1</sup>Passed environmental testing, but not as robust as other connectors

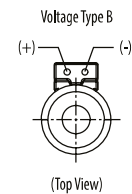
\*Rating dependent on mating connector

### ■ ELECTRICAL SPECIFICATIONS

Voltage	12 DC	24 DC	115 AC	230 AC
Current (A)	1.67	0.83	0.19	0.10
Power (W)	20	20	20	20

\*Nominal voltage 25°C (77°F).

### Diode Information



Flyback diode  
(arc suppressor),  
maximum recurrent  
peak reverse voltage  
- 800V

### ■ MODEL CODE

**MCSC - S - 012 - D - G0 - 0 - 00 - 10**

**Coil Series**  
S - Size 8 [210 bar]

**Coil Voltage**

Code	Coil Voltage
012	12 VDC
024	24 VDC
115	115 VAC
230	230 VAC

**Voltage Type**  
D - DC  
B - DC/with flyback diode  
A - AC/with full bridge rectifier

**Lead Length**  
0 - None  
A - 152mm [6.0 in]  
(Standard length with connector)  
B - 610mm [24.0 in]  
(Standard length without connector)

**Connector Type**  
G0 - ISO 4400 DIN 43650  
Q0 - Spade terminals  
W0 - Flying lead  
NO - Deutsch (DC only)  
YO - Amp JR (DC only)  
DO - Metripack 150 male (DC only)  
JO - Metripack 280 male (DC only)

### ■ PART NUMBERS (300AA00\_\_\_\_\_ - COMPLETE PART NUMBER IS 11 DIGITS)

Voltage	G0** Connector	Q0 Connector	W0 Connector	NO Connector	YO Connector	DO Connector	J0 Connector
12VDC	001A	009A	015A	021A	026A	031A	036A
24VDC	002A	010A	016A	022A	027A	032A	037A
115VAC	005A						
230VAC	006A						
12VDC*	007A	013A	019A	024A	029A	034A	039A
24VDC*	008A	014A	020A	025A	030A	035A	040A

\*With flyback diode. (Voltage Type B)

\*\*DIN 43560 mating connector for "G0" style coil - 02-166796 or AXP14116.

# Coils and Electronics

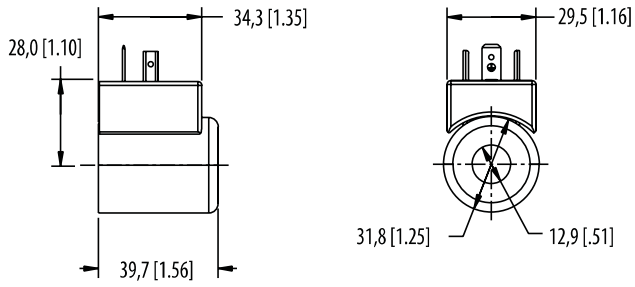
## S series

20W Standard Coil

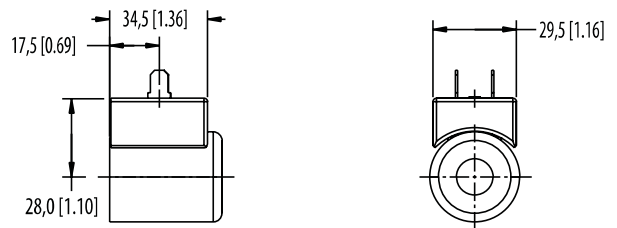
### ■ DIMENSIONS

mm [in]

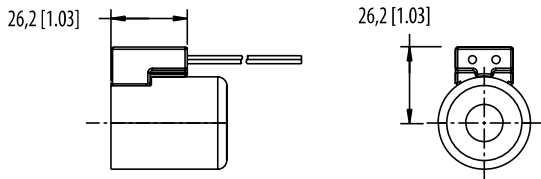
**G0**  
DIN 43650



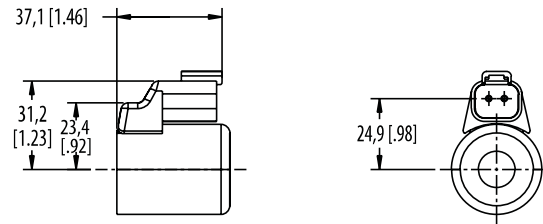
**Q0**  
Spade connector



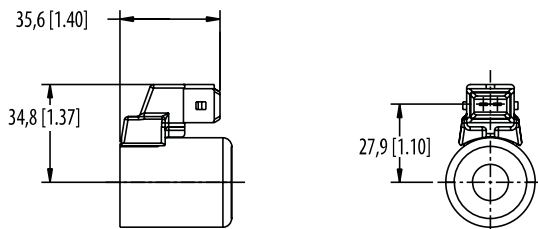
**W0**  
Leadwire



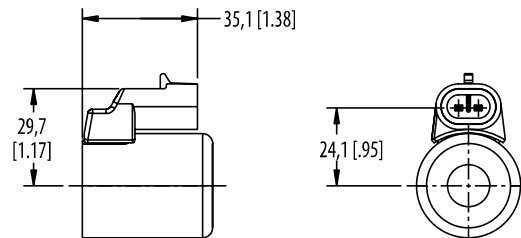
**N0**  
Deutsch Male DT04-2P



**Y0**  
AMP Junior



**D0**  
Metri-Pack 150 Male



**J0**  
Metri-Pack 280 Male

