

Coils and Electronics

J series

23W ToughCoil

www:

e-mail:

shop/sklep:

www.salushydraulics.pl

pl@salushydraulics.pl

www.salushydraulics.pl/sklep/

■ PERFORMANCE DATA

Duty cycle	100% at 110% of rated voltage
Magnet wire insulation	U.L. class N, 200°C [392°F] NEMA pub. No. MW 1000, section MW 35 – C [single]
Ambient temperature	100°C [212°F] continuous @ rated voltage
Input Voltage Range	85% to 110% of rated voltage
UL Rated (certificate available upon request)	

■ ENVIRONMENT PROTECTION

Rating	Connector Type
IP65	G0*
IP67	Y0, W0
IP69K	NO, DO, JO
Thermal shock dunk	W0 ¹ , NO, DO, JO

¹Passed environmental testing, but not as robust as other connectors

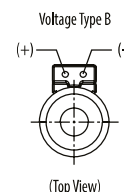
*Rating dependent on mating connector

■ ELECTRICAL SPECIFICATIONS

Voltage	12 DC	24 DC	115 AC	230 AC
Current (A)	1.92	0.96	0.22	0.11
Power (W)	23	23	23	23

*Nominal voltage 25°C (77°F).

Diode Information



Flyback diode
(arc suppressor),
maximum recurrent
peak reverse voltage
- 800V

■ MODEL CODE

MCSC - J - 012 - D - G0 - 0 - 00 - 10

Coil Series
J - Size 10, 12, 16, 20 [210 Bar]

Coil Voltage

Code	Coil Voltage
012	12 volt
024	24 volt
115	115 volt
230	230 volt

Voltage Type
D - DC
B - DC/with flyback diode
A - AC/with full bridge rectifier

Lead Length
0 - None
A - 152mm [6.0 in]
(Standard length with connector)
B - 610mm [24.0 in]
(Standard length without connector)

Connector Type
G0 - ISO 4400 DIN 43650
Q0 - Spade terminals
W0 - Flying lead
N0 - Deutsch (DC only)
Y0 - Amp JR (DC only)
D0 - Metripack 150 male (DC only)
J0 - Metripack 280 male (DC only)

■ PART NUMBERS - (300AA00_____ - COMPLETE PART NUMBER IS 11 DIGITS)

Voltage	G0** Connector	Q0 Connector	W0 Connector	N0 Connector	Y0 Connector	D0 Connector	J0 Connector
12VDC	081A	089A	095A	101A	106A	111A	116A
24VDC	082A	090A	096A	102A	107A	112A	117A
115VAC	085A						
230VAC	086A						
12VDC*	087A	093A	099A	104A	109A	114A	119A
24VDC*	088A	094A	100A	105A	110A	115A	120A

*With flyback diode. (Voltage Type B)

**DIN 43560 mating connector for "G0" style coil - 02-166796 or AXP14116.

Coils and Electronics

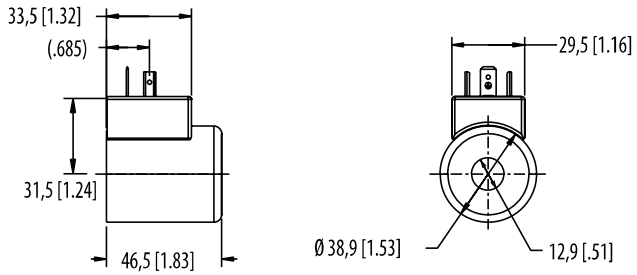
J series

23W ToughCoil

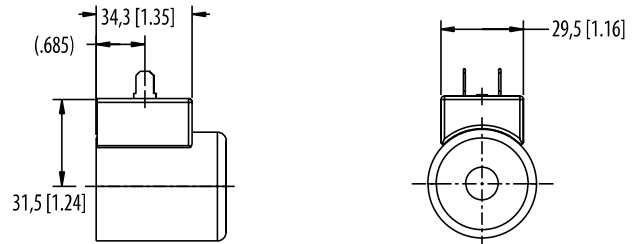
■ DIMENSIONS

mm [in]

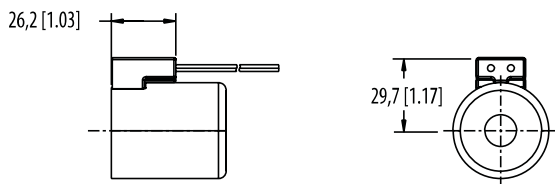
G0
DIN 43650



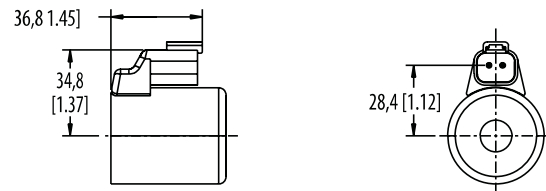
Q0
Spade connector



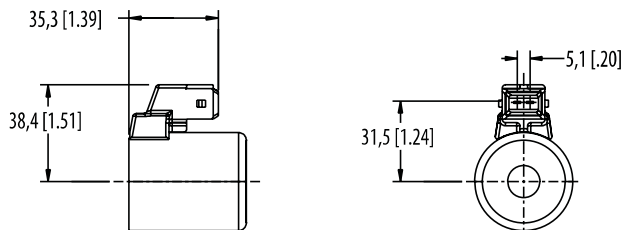
W0
Leadwire



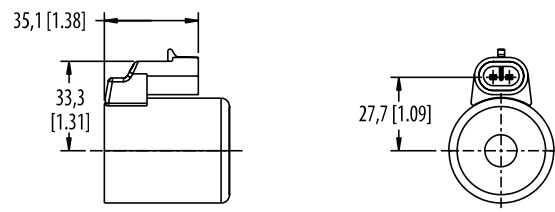
N0
Deutsch male DT04-2P integrated connector



Y0
AMP Junior timer integrated connector



D0
Metri-Pack 150 Male, integrated connector



J0
Metri-Pack 280 Male, integrated connector

