

Check Valves

565619, SPC2-10-P-0-25

SPC2-10

Pilot Operated Check Valve, Port 1 Pilot to Open
210 bar [3000 psi] • 23 l/min [6 US gpm]

www:

www.salushydraulics.pl

e-mail:

pl@salushydraulics.pl

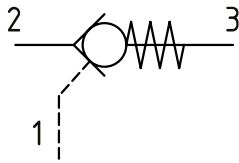
shop/sklep:

www.salushydraulics.pl/sklep/

DESCRIPTION AND OPERATION

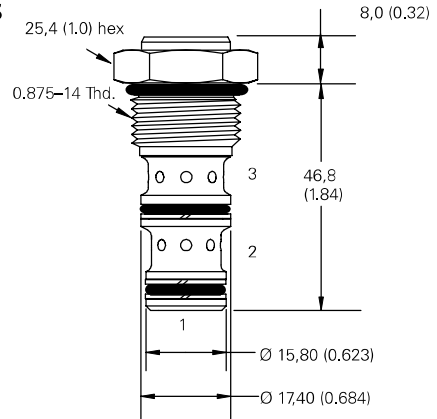
This is a pilot operated check valve where free flow takes place from port 2 to 3 and is blocked from port 3 to 2 until pilot pressure is applied to port 1.

SCHEMATIC



DIMENSIONS

mm [in]



Installation torque

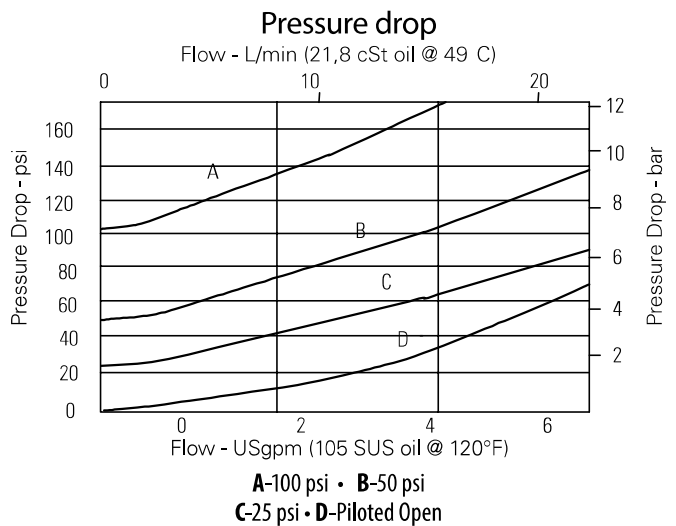
A - 47-54 Nm [35-40 ft. lbs]

S - 68-75 Nm [50-55 ft. lbs]

PERFORMANCE DATA

Rated pressure	210 bar [3000 psi]
Rated flow	23 l/min [6 US gpm]
Leakage	5 drops/min. maximum @ 210 bar [3000 psi]
Weight	0.08 kg [0.18 lb]
Pilot Ratio	4:1
Cavity	SDC10-3

PERFORMANCE CURVES



MODEL CODE

SPC2 - 10 - V - P - 3B - 50

Seal Option

Code	Seal Kit
Omit-Buna-N	02-153267
V-Viton	02-173666
U-Buna-N with no pilot seals	02-153267
W-Viton with no pilot seals	02-173666

Crack Pressure

Code	Bar	Psi
25	1.7	[25]
50	3.5	[50]
100	6.9	[100]

Housing

Code	Ports	Aluminum standard duty	Aluminum heavy duty
0	No Housing		
3B	3/8" BSP	02-173358	
6T	#6 SAE	566162	
2G	1/4" BSP		876705
3G	3/8" BSP		876714
6H	#6 SAE		876704
8H	#8 SAE		876711

* Aluminum bodies are to be used for pressures less than 210 bar [3000 psi].

* Additional housings available