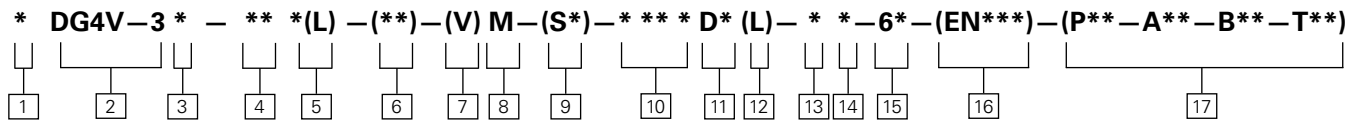


# DG4V-3 Model Series

DG4V30BMUH760

www: [www.salushydraulics.pl](http://www.salushydraulics.pl)  
 e-mail: [pl@salushydraulics.pl](mailto:pl@salushydraulics.pl)  
 shop/sklep: [www.sklep.salushydraulics.pl](http://www.sklep.salushydraulics.pl)



## 1 Seal Type

**Blank** – Viton  
**F6** – Buna Nitrile/High CAN

## 2 Model series

**4** – Solenoid operated  
**V** – Pressure rating 350 bar (5000 psi) on P, A & B ports  
**3** – ISO4401 Size 03

## 3 Performance

**Blank** – High performance  
**S** – Standard performance  
**R** – Standard performance with 8 Watt coil

## 4 Spool Type

Please refer functional symbols on Page 5 for spool types.

## 5 Spool Spring Arrangement

**A** – Spring offset, end-to-end  
**AL** – Same as “A” but left hand build  
**B** – Spring offset, end to center  
**BL** – Same as “B” but left hand build  
**C** – Spring centered  
**N** – No-spring detented

## 6 Manual Override Option

**Blank** – Plain override(s) in solenoid end(s) only ▲  
**H** – Water-resistant override(s) on solenoid end(s) ▲  
**Z** – No overrides at either end  
**W** – Twist and lock override in solenoid ends•

▲ No override in non-solenoid end of single solenoid valves  
 • DC high performance only

## 7 Solenoid Energization Identity

**Blank** – None  
**V** – Solenoid “A” is at port “A” end and/ or solenoid “B” is at port “B” end, independent of spool type

**NOTE:** Used to select the identification of the solenoid. Refer to table on page 4.

## 8 Flag Symbol

**M** – Electrical options and features

## 9 Spool Indicator Switch

**S7** – Spool position monitoring switch. Single solenoid valves only.  
**NOTE:** Refer Page B-6 and B-10 for further details

## 10 Coil Type

**U** – ISO4400, DIN43650 connector  
**U1** – ISO4400 fitted with PG11 plug  
**U6** – ISO4400 with fitted DIN plug with lights  
**KU** – Top exit flying lead (150mm)  
**KUP4** – Junior timer (Amp) connector  
**KUP5** – Integral Deutsch connector  
**KUPM4L** – Integral M12, 4-Pin connector  
**FW** – Flying lead with 1/2” NPT thread wiring housing  
**FTW** – Fly. lead wired terminal block & 1/2” NPT thread wiring housing  
**FPA3W** – Fly. lead, 3 Pin connector & 1/2” NPT thread wiring housing  
**FPA5W** – Fly. lead, 5 pin connector & 1/2” NPT thread wiring housing  
**X5** – Atex approved coil, ‘d’ type▲  
 ▲Also CSA and UL approved

## 11 Surge Suppressor/Damper

**D1** – Diode positive bias  
**D2** – Negative bias  
**D7** – Transorb type

See Page12 for circuit details

## 12 Solenoid Indicator Lights

**Blank** – None  
**L** – Solenoid indicator lights▲  
 ▲Flying lead coil type only

## 13 Coil Rating

**B** – 110V AC 50Hz/120V AC 60 Hz  
**BL** – 110V 50 Hz/120V 60 Hz  
**D** – 220V AC 50 Hz/240V AC 60 Hz  
**DS** – 28V DC 30 watt  
**ER** – 120V AC 60 Hz ▲  
**ES** – 240V AC 60 Hz ▲  
**G** – 12V DC  
**GL** – 12V DC  
**H** – 24V DC  
**HL** – 24V DC  
**HM** – 24V DC 8 watt  
 ▲X5 coil type only

## 14 Tank Pressure Rating

Refer to “Operating Data” for port T pressure ratings.  
**4** – 70 bar (1000 psi) ▲  
**5** – 100 bar (1500 psi) for standard performance models, DG4V-3S, with AC or DC solenoids.  
**6** – 207 bar (3000 psi) for AC high performance models, DG4V-3, including spool position indicator type S6.  
**7** – 207 bar (3000 psi) for DC high performance models, DG4V-3, including spool position indicator type S6.  
**8** – 160 bar (2300 psi) for AC high performance models with lower tank port rating.  
 ▲X5 coil type only

## 15 Design Number

**60** – Basic design  
**61** – Type 8 spool

## 16 Special Features

“EN\*\*\*” code number assigned as required.

**EN21** – CSA approved models with 1/2” NPT entry conduit box, type FW and solenoid coil letter B,D,G, or H.  
**EN38** – Low leakage version. Typical leakage 5ml/min/land at 100 bar.

**NOTE:** EN38 valve spools have additional overlap and resulting 2X pressure drop compared to standard valve spools.

## 17 Orifice Plug

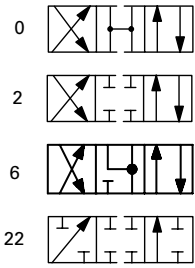
**00** – No orifice required  
**03** – 0.3 mm dia.  
**06** – 0.6 mm dia.  
**08** – 0.8 mm dia.  
**09** – 0.9 mm dia.  
**10** – 1.0 mm dia.  
**13** – 1.3 mm dia.  
**15** – 1.5 mm dia.  
**20** – 2.0 mm dia.  
**23** – 2.3 mm dia.

# Functional Symbols

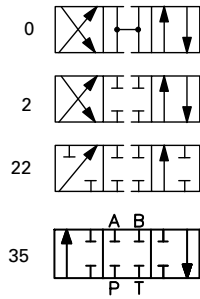
## Spool Options

The valve function schematics apply to both U.S. and European valves

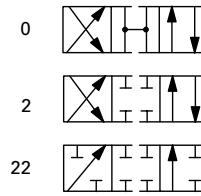
### DG4V-3(S)-\*NV



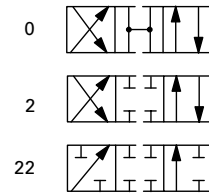
### DG4V-3(S)-\*AV



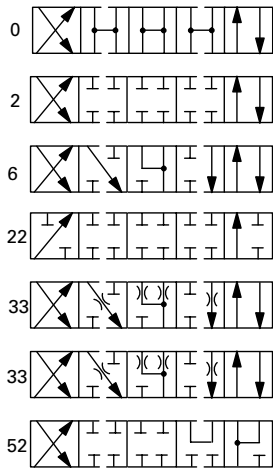
### DG4V-3(S)-\*ALV



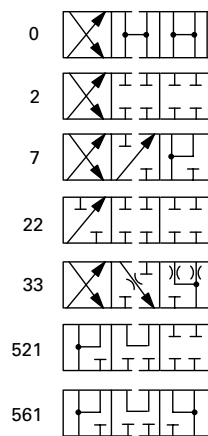
### DG4V-3(S)-\*ALV



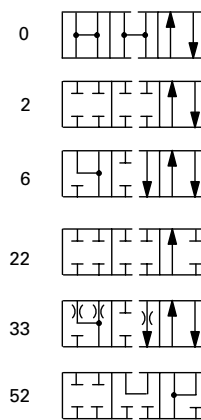
### DG4V-3(S)-\*CV



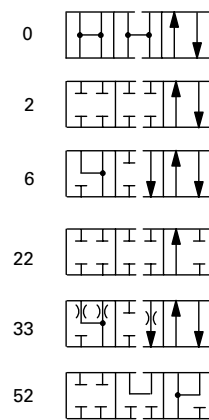
### DG4V-3(S)-\*BV



### DG4V-3(S)-\*BLV



### DG4V-3(S)-\*BLV

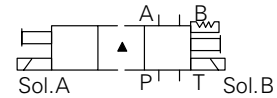
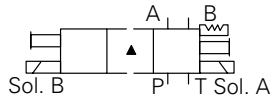


## Solenoid Identified to US and European Standards

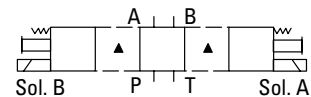
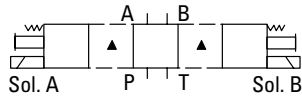
### U.S. Solenoid Standard

### European Solenoid Standard (specify "V" in the model code at position 7 on page 3)

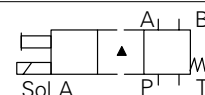
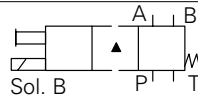
Double solenoid valves, two position, detented



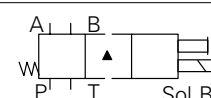
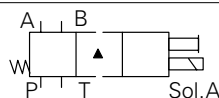
Double solenoid valves, spring centered



Single solenoid valves, solenoid at port A end



Single solenoid valves, solenoid at port B end



▲ Transient condition only

# Operating Data

Feature	DG4V-3	DG4V-3S	DG4V-3R			
Pressure Limits P, A and B ports	350 bar (5075 psi)	350 bar (5075 psi) ■	350 bar (5075 psi)			
T port	210 bar (3045 psi)	100 bar (1450 psi)	210 bar (3045 psi)			
Flow rating	See performance data	See performance data	See performance data			
Relative duty factor	Continuous; ED = 100%	Continuous; ED = 100%	Continuous; ED = 100%			
Type of protection: ISO 4400 coils with plug fitted correctly	IEC 144 class IP65	IEC 144 class IP65	IEC 144 class IP65			
Coil winding	Class H	Class H	Class H			
Lead wires (coils type F***)	Class H	Class H	Class H			
Coil encapsulation	Class F	Class F	Class F			
	<b>Permissible voltage fluctuation:</b>					
Maximum	Refer to temperature limits.	Refer to temperature limits.	Refer to temperature limits.			
Minimum	90% rated	90% rated	90% rated			
<b>Typical response times at 100% rated volts measured from application/removal of voltage to full spool displacement of "2C" spool at:</b>						
Flow rate P-A, B-T	40 l/min (10.6 USgpm)	20 l/min (5.3 USgpm)	20 l/min (5.3 USgpm)			
Pressure	175 bar (2537 psi)	175 bar (2537 psi)	175 bar (2527 PSI)			
AC (~) energizing	15 ms	18 ms	18 ms			
AC (~) de-energizing	23 ms	32 ms	32 ms			
DC (=) energizing	45 ms	60 ms	60 ms			
DC (=) de-energizing	28 ms	40 ms	40 ms			
<b>Power consumption, AC solenoids (for coils listed in model code).</b>	<b>Initial VA (RMS) ▲</b>	<b>Holding VA (RMS)</b>	<b>Initial VA (RMS) ▲</b>	<b>Holding VA (RMS)</b>	<b>Initial VA (RMS)</b>	<b>Holding VA (RMS)</b>
<b>Full power coils:</b>						
Dual frequency coils at 50 Hz	280	61	280	61	N/A	
Dual frequency coils at 60 Hz	300	58	300	58	N/A	
Low power coils, "BL" and "DL": (Not available with "N" – No-spring detented models)	Low power coils not usable with DG4V-3S valves.		170	37	N/A	
Dual frequency coils at 50 Hz	–	–	190	37	N/A	
Dual frequency coils at 60 Hz	–	–	–	–	N/A	
<b>Power consumption, DC solenoids at rated voltage and 20 C (68 F).</b>						
<b>Full power coils:</b>						
12V, model type "G"	30W	–	30W	–	N/A	
24V, model type "H"	30W	–	30W	–	N/A	
<b>Low power coils:</b>						
12V, model type "GL"	Low power coils not usable with DG4V-3S valves.		–	18W	N/A	
24V, model type "HL"			18W	–	N/A	
24V, HM Coil			8W	–	N/A	

■ For applications where valves are to remain pressurized (either energized or de-energized) at pressures over 210 bar (3045 psi) without frequent switching, it is recommended to use the high performance model, DG4V-3.

▲ 1<sup>st</sup> half cycle; armature fully retracted.

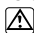
# Operating Data

## Spool Position Indicator Models

Spool/spring arrangement types 0A, 0B, 2A, 2B, 22A, 23A, 35A, 52B, 3B, 6B

### DC model type "S7"



This product has been designed and tested to meet specific standards outlined in the European Electromagnetic Compatibility Directive (EMC) 2004/108/EC. For instructions on installation requirements to achieve effective protection levels see this leaflet and the Installation Wiring Practices for Vickers Electronic Products leaflet 2468. Wiring practices relevant to this Directive are indicated by  Electromagnetic Compatibility (EMC).

Input:

Supply Voltage	20-32 VDC
Reverse Pol. Protection	Yes
	outputs with alternating function - PNP

Output:

Max output load	<=400mA ; Duty Ratio 100%
Short Circuit Protection	Yes
Hysteresis	<=0.05mm
Electrical connector	M12x1 4-Pole
Thermal shift	<=±0.1mm

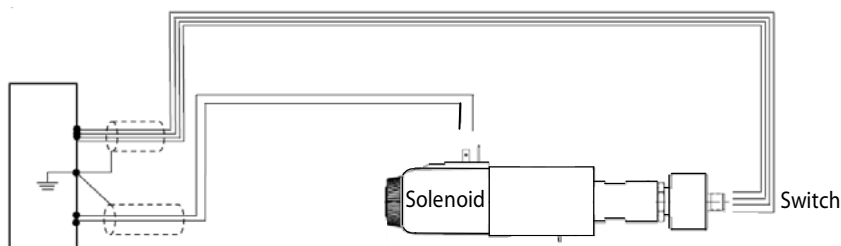
Plug connections:

Pin 1	+ Supply
Pin 2	Normal Closed
Pin 3	0V
Pin 4	Normal Open

EMC	Protection DIN EN 61000-6-1/2/3/4, Aug 2002
Humidity	0-95% rel. (nach DIN 40040)
Protection Class	IP65 DIN 40050
Vibration 0-500Hz	Max. 20g
Shock	Max. 50g

• Factory setting ensures this condition under all combinations of manufacturing tolerance and of temperature drift (see "Temperature Limits").

## Wiring Connections



### Warning

All power must be switched off before connecting or disconnecting any plugs.

Pin number 4,  
"Normally open"

Pin number 3,  
0V

Pin number 1,  
Supply +ve

Pin number 2,  
"normally closed"



M12 4 PIN CONNECTOR DETAILS



Customer's protective ground connection



### WARNING: Electromagnetic Compatibility (EMC)

It is necessary to ensure that the unit is wired up in accordance with the connection arrangements shown above. For effective protection the user's electrical cabinet, the valve subplate or manifold and the cable screens should be connected to efficient ground points.

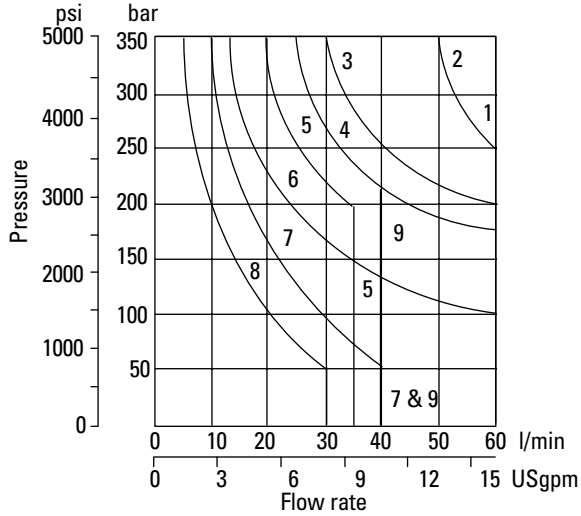
In all cases both valve and cable should be kept as far away as possible from any sources of electromagnetic radiation such as cables carrying heavy current, relays and certain kinds of portable radio transmitters, etc. Difficult environments could mean that extra screening may be necessary to avoid the interference.

# Performance Data

## DG4V-3 models (high performance)

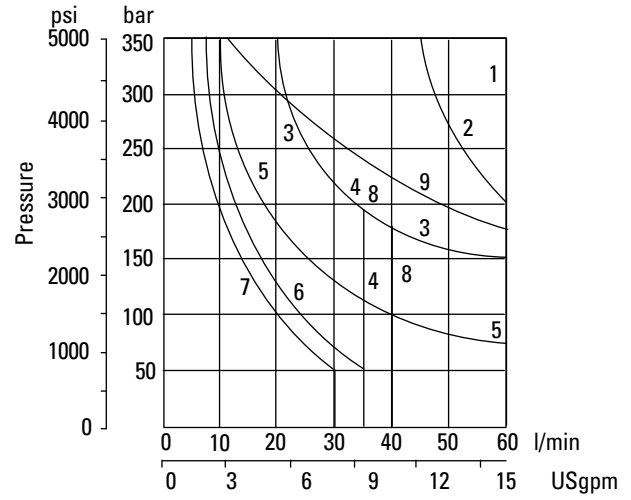
**Graph 1**

AC solenoid valves operating at 50 Hz



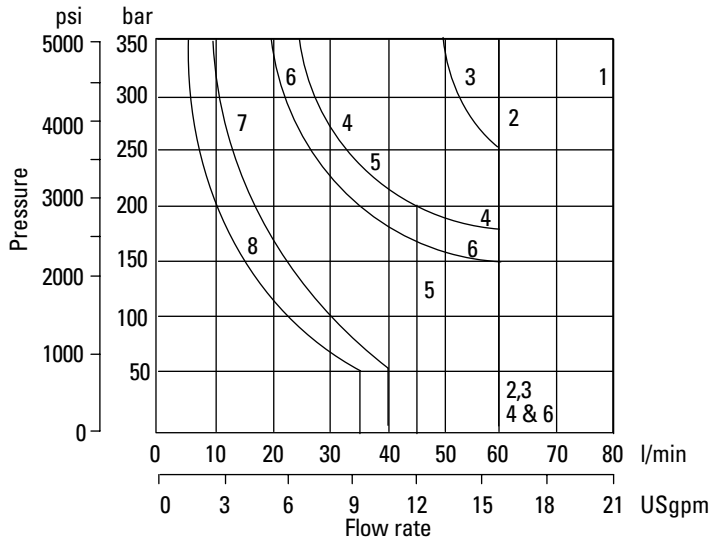
**Graph 2**

AC solenoid valves operating at 60 Hz



**Graph 3**

DC solenoid valves



Spool / spring code	Graph 1 curve	Graph 2 curve	Graph 3 curve
0A(L)	2	2	3
0B(L) & 0C	1	1	2
2A(L)	2	2	3
2B(L) & 2C	1	1	1
2N	1	1	2
6B(L) & 6C	6	5	6
8B(L) & 8C	5 ▲	4 ▲	5 ▲
22A(L)	8	7	8
22B(L) & 22C	7	6	7
33B(L) & 33C	4	3	4
52BL, 52C	6	5	6
521B	6	5	6

▲ Consult Eaton regarding each application that will jointly have flow rates approaching this curve and a pressurized volume exceeding 2000 cm<sup>3</sup> (122 cu.in.)

# Performance Data

Typical with mineral oil at 36 cSt (168.6 SUS) and a specific gravity of 0.87.

## Maximum flow rates

Performance based on full power solenoid coils warm and operating at 90% rated voltage.

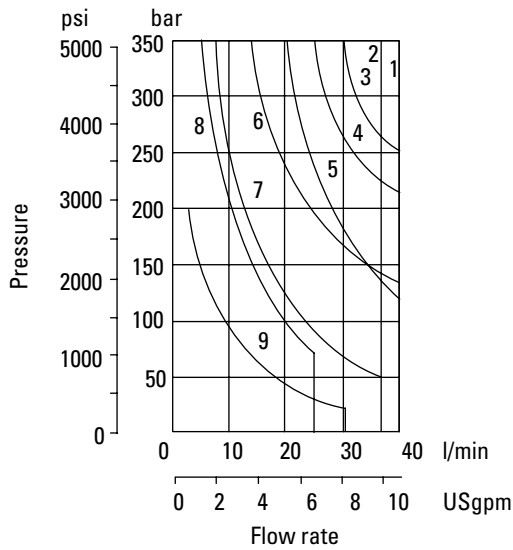
See note at bottom of next page when using low power coils (DG4V-3 models only).

**B**

## DG4V-3S models (standard performance)

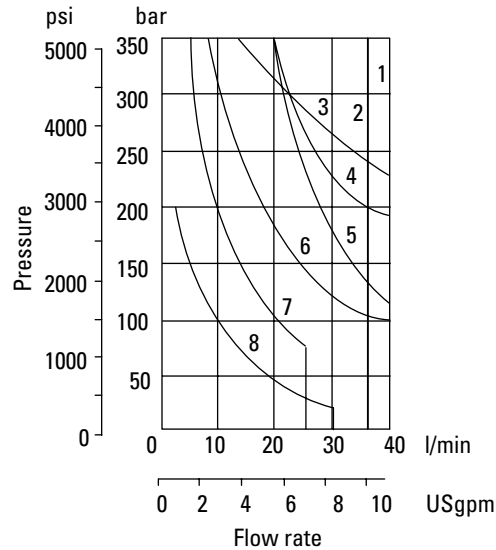
### Graph 4

AC solenoid valves operating at 50 Hz



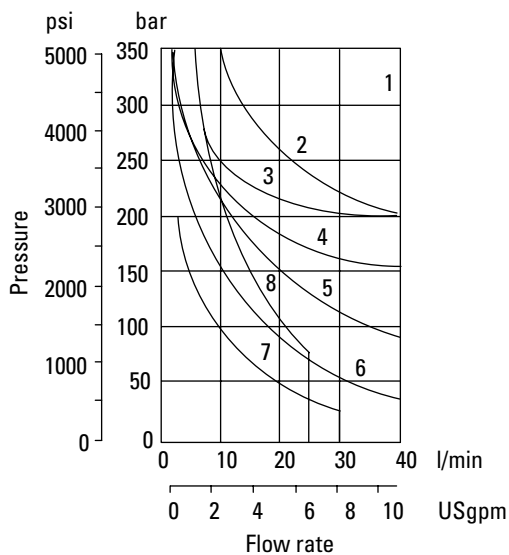
### Graph 5

AC solenoid valves operating at 60 Hz



### Graph 6

DC solenoid valves

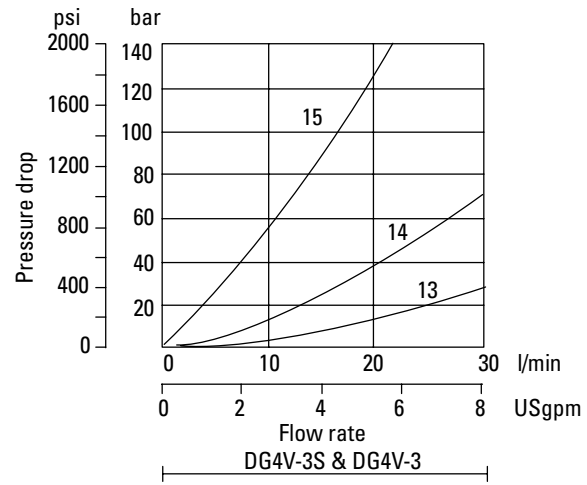
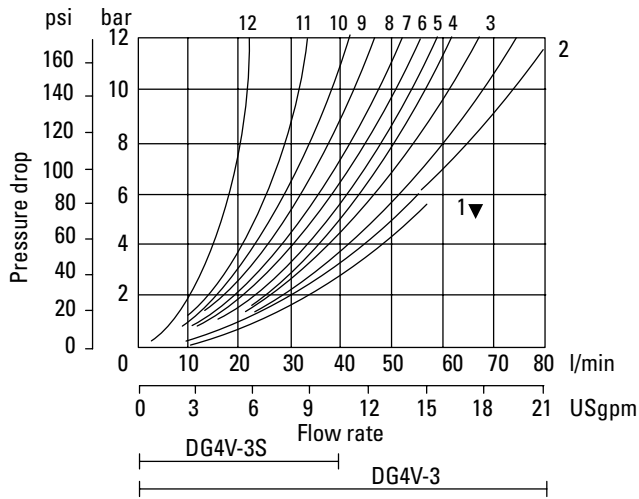


Spool / spring code	Graph 1 curve	Graph 2 curve	Graph 3 curve
0A(L)	1	1	3
0B(L) & 0C	1	1	1
2A(L)	5	5	3
2B(L) & 2C	2	2	3
2N	1	1	1
6B(L) & 6C	6	6	5
8B(L) & 8C	8 ▲	7 ▲	8 ▲
22A(L)	9	8	7
22B(L) & 22C	7	7	6
33B(L) & 33C	4	4	4
52BL, 52C	6	6	5
521B	6	6	5

▲ Consult Eaton regarding each application that will jointly have flow rates approaching this curve and a pressurized volume exceeding 2000 cm<sup>3</sup> (122 cu.in.)

# Performance Data

## Pressure drops



▼ Curve for spool type 6: not recommended for flows in excess of 60 l/min (15.8 USgpm).

## Pressure drops in offset positions except where otherwise indicated

Spool / spring code	Spool positions covered	P to A	P to B	A to T	B to T	P to T	B to A or A to B
0A(L)	Both	5	5	2	2	-	-
0B(L) & 0C	De-energized	-	-	-	-	4 ▲ Δ	-
	Energized	4	4	2	2	-	-
2A(L)	Both	6	6	5	5	-	-
2B(L) & 2C	Energized	5	5	2	2	-	-
2N	Both	6	6	3	3	-	-
6B(L) & 6C	De-energized	-	-	3 ▲	3 Δ	-	-
	Energized	6	6	1	1	-	-
	Energized	4	4	3 ▲	3	-	-
8B(L) & 8C	All	9	9	5	5	3	-
22A(L), 22B(L) & 22C	All	6	6	-	-	-	-
33B(L) & 33C	De-energized	-	-	15 ▲	15 Δ	-	-
	Energized	5	5	2	2	-	-
52BL & 52C	Energized	6 ▲	6 Δ	2	-	-	10 ○
	Energized	6 ▲	6 Δ	2	-	-	10 ○
521B	All	6 ▲	6 Δ	-	-	-	10 ○
	De-energized	-	-	10 ▲	11 Δ	-	10 ○
	Energized	6	6 Δ	-	-	-	10 ○

▲ "B" plugged Δ "A" plugged ○ "P" plugged

## Viscosity cSt (SUS)

14 (71.75)	20 (97.8)	43 (200)	54 (251)	65 (302)	76 (352)	85 (399)
% of ΔP (Approx.)						
81	88	104	111	116	120	124

For other viscosities, pressure drops approximate to:

A change to another specific gravity will yield an approximately proportional change in pressure drop. The specific gravity of a fluid may be obtained from its producer. Fire resistant fluids usually have higher specific gravities than oil.

# Installation Dimension

## Models for use with ISO 4400 (DIN 43650) connectors

3rd angle projection 

Double solenoid models

Single solenoid models

DG4V-3(S)-\*C-\*\*-\*(V)M-U-\*\*-60

DG4V-3(S)-\*A(-\*\*) ■

DG4V-3(S)-\*AL(-\*\*) ■

DG4V-3(S)-\*N-\*\*-\*(V)M-U-\*\*-60

DG4V-3(S)-\*B(-\*\*) ■

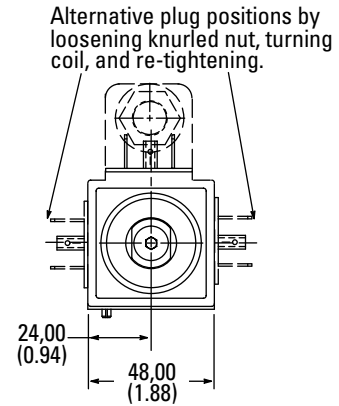
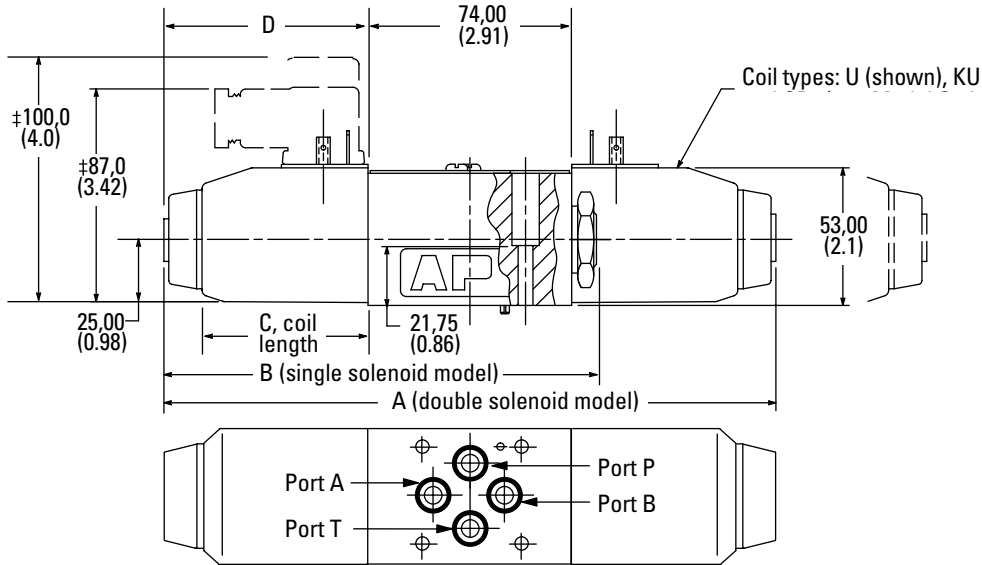
DG4V-3(S)-\*BL(-\*\*) ■

DG4V-3(S)-8BL(-\*\*) ■

DG4V-3(S)-8B(-\*\*) ■

As shown

Solenoid and end cap interchangeable



■ Not applicable to type "8" spool.

‡ Can vary dependent on source of plug.

Dimensions in mm(in).

Model type	AC or DC	A Dim.	B Dim.	C Dim.	D Dim.
All	DC =	220 (8.66)	156 (6.14)	61 (2.5)	73 (2.87)
DG4V-3	AC ~	200 (7.87)	146 (5.75)	51 (2.1)	63 (2.48)
DG4V-3S	AC ~	200 (7.87)	146 (5.75)	45 (1.7)	63 (2.48)

## DG4V-3-\*A(L)-(V)M-S7-U-\*\*-60

Single solenoid models with Inductive type switch indicating when the spool is in the spring off-set position. Refer Pg6 connection to switch.

