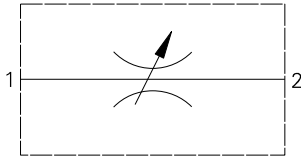


NV1-10 - Flow restrictor valve

www: www.salushydraulics.pl
 e-mail: pl@salushydraulics.pl
 shop/sklep: www.sklep.salushydraulics.pl

Needle
 45 L/min (12 USgpm) • 210 bar (3000 psi)

Eaton NV1-10



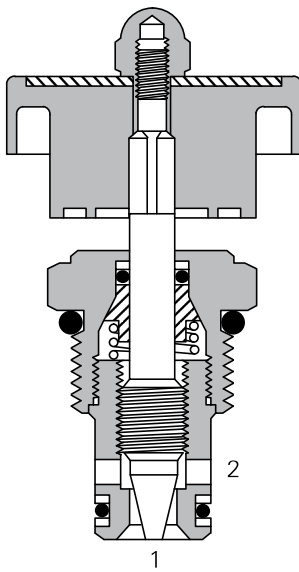
Operation

This needle valve is a variable orifice used to create a pressure drop when flow passes from port 1 to 2 or port 2 to 1. Clockwise rotation of the adjust screw de-creases the orifice size to completely closed and anti-clockwise increases the orifice. The setting can be locked using the lock nut on the adjust screw

Features

Hardened and ground working components. Cartridge construction for maximum mounting flexibility.

Sectional view



Performance data

Ratings and specifications

Performance data is typical with fluid at 21,8 cSt (105 SUS) and 49°C (120°F)

Typical application pressure (all ports)	210 bar (3000 psi)
Cartridge fatigue pressure (infinite life)	210 bar (3000 psi)
Rated flow	45 L/min (12 USgpm)
Internal leakage	5 drops/min maximum @ 210 bar (3000 psi)
Temperature range	-40° to 120°C (-40° to 248°F)
Cavity	C-10-2
Fluids	All general purpose hydraulic fluids such as: MIL-H-5606, SAE 10, SAE 20 etc.
Filtration	Cleanliness code 18/16/13
Standard housing material	Aluminum
Weight cartridge only	0,11 kg. (0.24 lbs)
Seal kit	565806 (Buna-N) 889627 (Viton®)

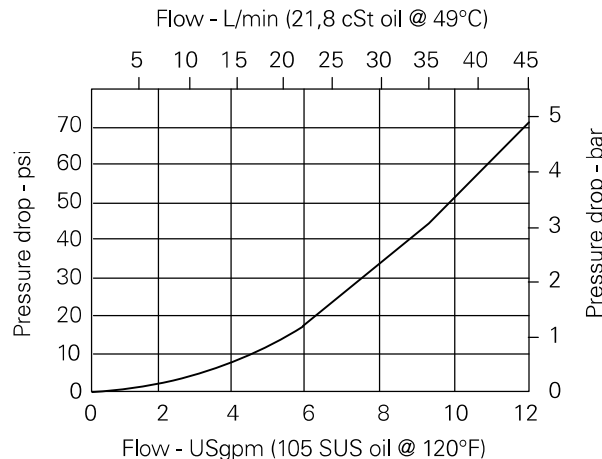
Viton is a registered trademark of E.I. DuPont

Description

This is a manually adjusted cartridge type needle valve. With fine control it is ideal for none compensated speed control of actuators or as a control orifice in conjunction with a pressure compensator. Total shut off can be achieved allowing the valve to be used as a shut of valve.

Pressure drop

Cartridge only



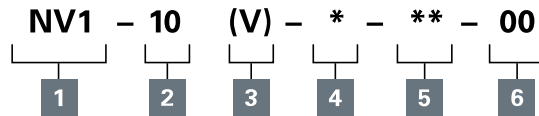
Fully open port 1 to port 2 or port 2 to port 1

Where measurements are critical request certified drawings. We reserve the right to change specifications without notice.

NV1-10 - Flow restrictor valve

Needle
45 L/min (12 USgpm) • 210 bar (3000 psi)

Model code



1 Function
NV1 - Needle valve

2 Size
10 - 10 size

3 Seal material
Blank - Buna-N
V - Viton®

4 Adjustment
K - Knob (black)
R - Knob (red)

5 Port size

Code	Port size	Housing number	
		Aluminium light duty	Aluminium fatigue rated
0	Cartridge only		
3B	3/8" BSPP	02-175462	-
6T	SAE 6	566151	-
2G	1/4" BSPP	-	876702
3G	3/8" BSPP	-	876703
6H	SAE 6	-	876700
3G	SAE 8	-	876701

See section J for housing details.

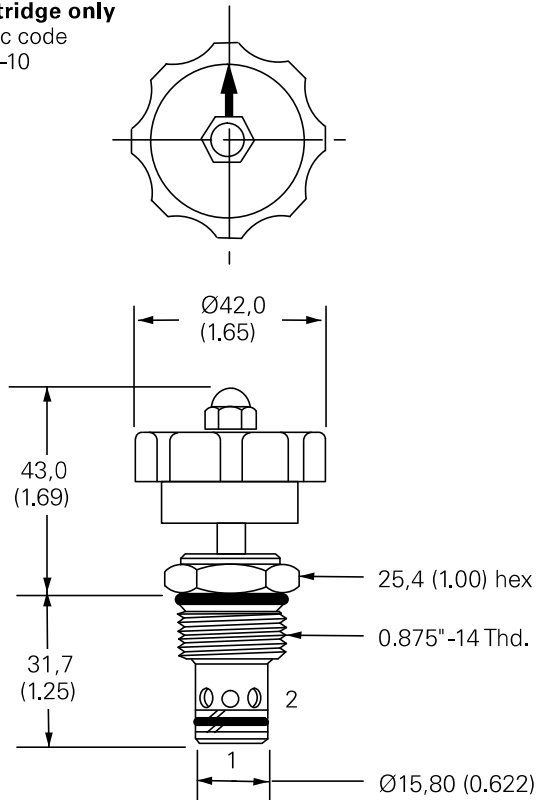
6 Special features
00 - None
(Only required if valve has special features, omit if ("00"))

Dimensions

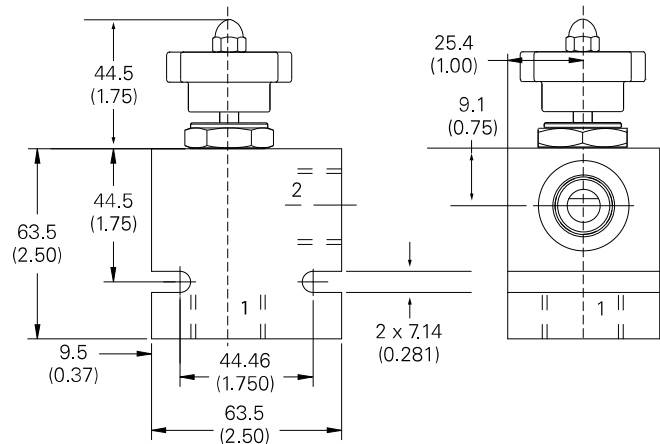
mm (inch)

Torque cartridge in aluminum housing
47-54 Nm (35-40 ft lbs)

Cartridge only
Basic code
NV1-10



Installation drawing

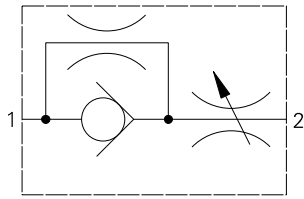


Where measurements are critical request certified drawings. We reserve the right to change specifications without notice.

NV1-16 - Flow restrictor valve

Needle

151 L/min (40 USgpm) • 210 bar (3000 psi)



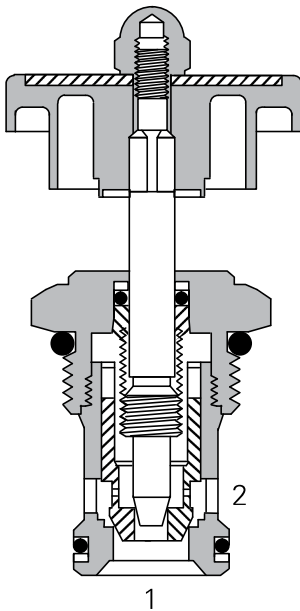
Operation

This needle valve is non-pressure compensated. Flow is controlled in the direction from port 2 to port 1, from full flow to tight shut-off, by turning the adjustment feature clockwise. The flow from port 1 to port 2 will be restricted.

Features

Hardened and ground working components. Cartridge construction for maximum mounting flexibility.

Sectional view



Performance data

Ratings and specifications

Performance data is typical with fluid at 21,8 cSt (105 SUS) and 49°C (120°F)

Typical application pressure (all ports)	210 bar (3000 psi)
Cartridge fatigue pressure (infinite life)	210 bar (3000 psi)
Rated flow	151 L/min (40 USgpm)
Internal leakage	5 drops/min maximum @ 210 bar (3000 psi)
Temperature range	-40° to 120°C (-40° to 248°F)
Cavity	C-16-2
Fluids	All general purpose hydraulic fluids such as: MIL-H-5606, SAE 10, SAE 20 etc.
Filtration	Cleanliness code 18/16/13
Standard housing material	Aluminum
Weight cartridge only	0,34 kg. (0.76 lbs)
Seal kit	565810 (Buna-N), 889609 (Viton®)

Viton is a registered trademark of E.I. DuPont

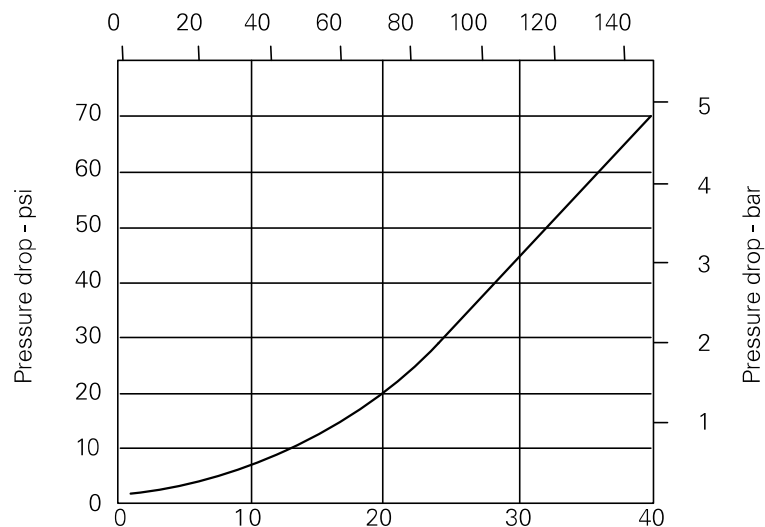
Description

This is a manually adjusted cartridge type needle valve. With fine control it is ideal for none compensated speed control of actuators or as a control orifice in conjunction with a pressure compensator. Total shut off can be achieved allowing the valve to be used as a shut of valve.

Pressure drop curves

Cartridge only

Flow - L/min (21,8 cSt oil @ 49°C)



Flow - USgpm (105 SUS oil @ 20°F)

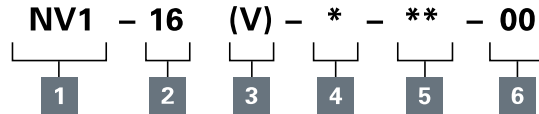
Full open port 2 to port 1

Where measurements are critical request certified drawings. We reserve the right to change specifications without notice.

NV1-16 - Flow restrictor valve

Needle
151 L/min (40 USgpm) • 210 bar (3000 psi)

Model code



1 Function

NV1 - Needle valve

2 Size

16 - 16 size

3 Seal material

Blank - Buna-N
V - Viton®

4 Adjustment

K - Knob (black)
R - Knob (red)

5 Port size

Code	Port size	Housing number	
		Aluminium light duty	Aluminium fatigue rated
0	Cartridge only		
6B	3/4" BSPP	02-175463	-
12T	SAE 12	566149	-
4G	1/2" BSPP	-	876716
6G	3/4" BSPP	-	876718
10H	SAE 10	-	876717
12G	SAE 12	-	566113

See section J for housing details.

6 Special features

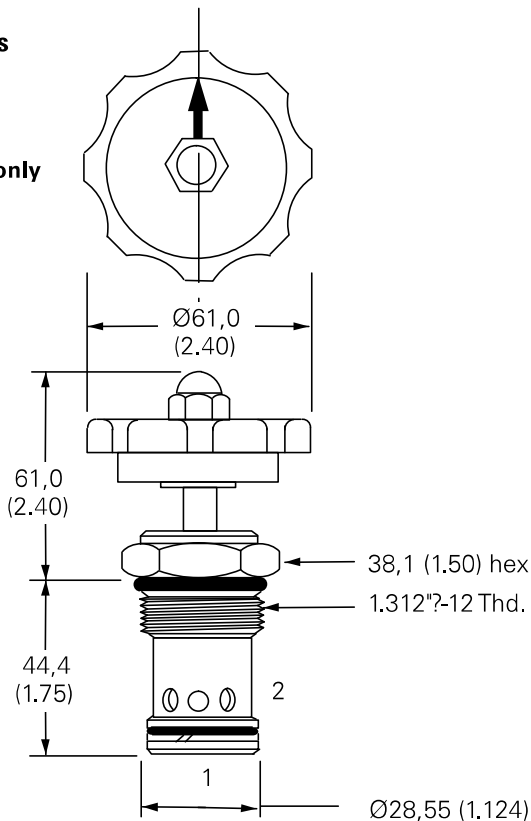
00 - None
(Only required if valve has special features, omit if ("00"))

Dimensions

mm (inch)

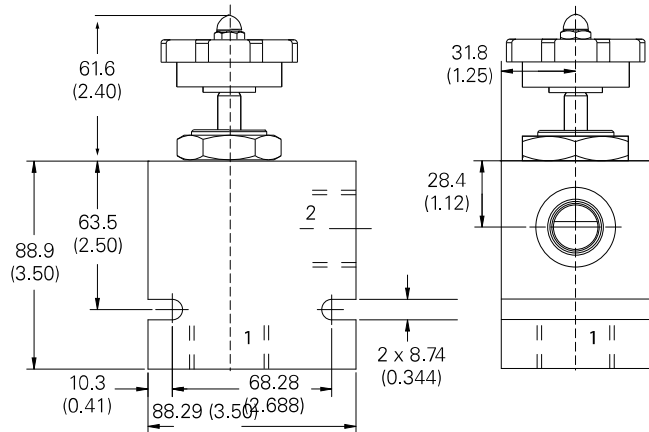
Cartridge only

Basic code
NV1-16



Torque cartridge in aluminum housing
108-122 Nm (80-90 ft lbs)

Installation drawing

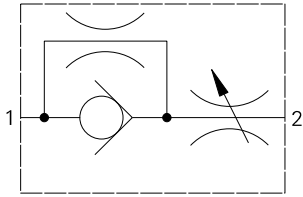


Where measurements are critical request certified drawings. We reserve the right to change specifications without notice.

NV1-20 - Flow restrictor valve

Needle

265 L/min (70 USgpm) • 210 bar (3000 psi)



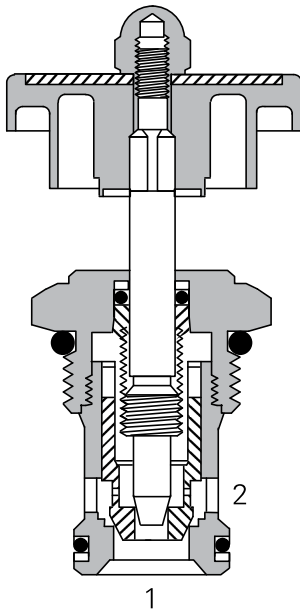
Operation

This needle valve is non-pressure compensated. Flow is controlled in the direction from port 2 to port 1, from full flow to tight shut-off, by turning the adjustment feature clockwise. The flow from port 1 to port 2 will be restricted.

Features

Hardened and ground working components. Cartridge construction for maximum mounting flexibility.

Sectional view



Performance data

Ratings and specifications

Performance data is typical with fluid at 21,8 cSt (105 SUS) and 49°C (120°F)

Typical application pressure (all ports)	210 bar (3000 psi)
Cartridge fatigue pressure (infinite life)	210 bar (3000 psi)
Rated flow	265 L/min (70 USgpm)
Internal leakage	5 drops/min maximum @ 210 bar (3000 psi)
Temperature range	-40° to 120°C (-40° to 248°F)
Cavity	C-20-2
Fluids	All general purpose hydraulic fluids such as: MIL-H-5606, SAE 10, SAE 20 etc.
Filtration	Cleanliness code 18/ 16/13
Standard housing material	Aluminum
Weight cartridge only	0,59 kg. (1.3 lbs)
Seal kit	889615 (Buna-N), 889619 (Viton®)

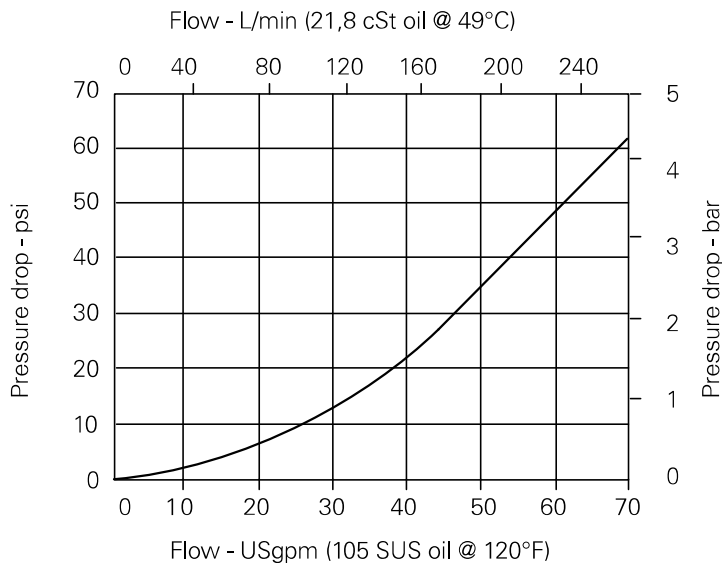
Viton is a registered trademark of E.I. DuPont

Description

This is a manually adjusted cartridge type needle valve. With fine control it is ideal for none compensated speed control of actuators or as a control orifice in conjunction with a pressure compensator. Total shut off can be achieved allowing the valve to be used as a shut of valve.

Pressure drop curves

Cartridge only



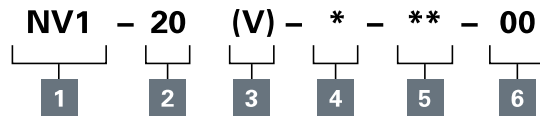
Full open port 2 to port 1

Where measurements are critical request certified drawings. We reserve the right to change specifications without notice.

NV1-20 - Flow restrictor valve

Needle
265 L/min (70 USgpm) • 210 bar (3000 psi)

Model code



1 Function

NV1 - Needle valve

2 Size

20 - 20 size

3 Seal material

Blank - Buna-N
V - Viton®

4 Adjustment means

K - Knob (black)
R - Knob (red)

5 Port size

Code	Port size	Housing number	
		Aluminium light duty	Aluminium fatigue rated
0	Cartridge only		
8B	1" BSPP	02-175464	-
16T	SAE 16	566409	-
6G	3/4" BSPP	-	876732
8G	1" BSPP	-	876734
12H	SAE 12	-	876733
16H	SAE 16	-	876735

See section J for housing details.

6 Special features

00 - None
(Only required if valve has special features, omit if ("00"))

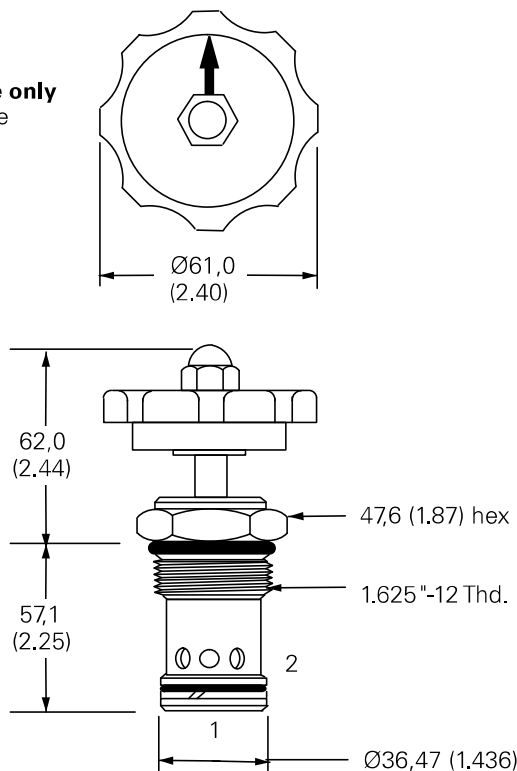
Dimensions

mm (inch)

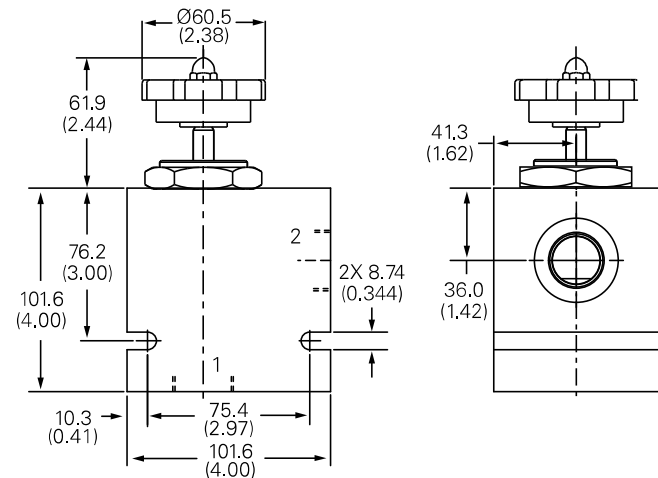
Torque cartridge in aluminum housing
128-155 Nm (95-115 ft lbs)

Cartridge only

Basic code
NV1-20



Installation drawing



Where measurements are critical request certified drawings. We reserve the right to change specifications without notice.