

**Eaton**  
Core crimp machines & tooling master catalog

# Eaton core crimp machines and tooling



**EATON**

*Powering Business Worldwide*

# Offering a streamlined product portfolio.

Introducing the new  
core crimp machine lineup.

With the new Eaton-branded crimp machine portfolio, both Aeroquip and Weatherhead customers have access to the same crimp machines and tooling. This simplified and improved offering includes lower cost options as well as both positive stop and variable machines to meet all of your application needs. Refer to the crimp machine comparison chart for details on the updated crimp machine portfolio and the uses, features, and capabilities of each of the machines.

# Crimp machine comparison chart

Eaton's new lineup of positive stop and variable crimpers includes portable, general service, and industrial production options. Compare our new offering of crimp machines and their associated features to understand which crimper is best for you.



## Core crimp machines



**ET1187**



**ET1000**



**FT1380**



**T-420**



**FT1390**



**ET4001**



**ET5050**

<b>Production volume</b>	Low	Low	Medium	Medium	Medium/high	Medium	High
<b>Type</b>	Variable	Positive stop	Variable	Positive stop	Variable	Positive stop	Variable
<b>Capability-braided (up to)</b>	1 ¼"	1"	1 ¼"	1 ¼"	2"	2"	2"
<b>Capability-spiral (up to)</b>	1"	1"	1 ¼"	1 ¼"	2"	2"	2"
<b>Capability-industrial (up to)</b>	1 ¼"	1"	1 ¼"	1 ¼"	2"	2"	4"
<b>Application</b>	Portable, job shops, maintenance departments	Portable, job shops, maintenance departments	Hose distributors, small assembly shops	Hose distributors, small assembly shops, factory, construction, mines	Hose distributors, assembly shops	Hose distributors, assembly shops, construction, mines	Industrial production facility, specialty
<b>*Pump options</b>	110v, air/hydraulic, 12v, hand pump	110v, air/hydraulic, 12v, hand pump	115v, 230v	110v, 220v	115v, 230v	220v	230v, 380v, 400v, 420v, 440v, 460v, 480v,

\*Capabilities based on Eaton core hose and fitting products

\*See pump ordering options for each machine for specific kit numbers

# Portable crimp machines

## ET1187

The ET1187 machine is our most economical variable crimp machine to date. It boasts a broad crimp capability with a new "ease-of-use" that is sure to excite hose assemblers in the field.



This machine is designed to easily adjust to the Aeroquip™ and Weatherhead™ core products. It's as simple as turning the collar to the correct color to match the layline on the hose, adjust the ring so that the correct size dot aligns with the correct size line on the collar and the machine is set for the correct crimp. Load the correct crimp die based on the crimp die chart attached to the machine, and the machine is ready to crimp.



GH681 / H180



GH781 / H280



GH493 / H430



Micrometer dial

### Tooling options

Die cage part #	Tooling			Tooling packages	
	1 wire braid TTC/Z/Winner	2 wire braid TTC/Z/Winner	Spiral hose 4S fitting	ET4020TP-0002	ET4020TP-0003
FT1380-200-M150	-4	-4		X	X
FT1380-200-M180	-6	-4†		X	X
FT1380-200-M210	-8	-6	-6	X	X
FT1380-200-M240	-10	-8	-8††	X	X
FT1381-200-M280	-12	-10, -12†	-8, -10	X	X
FT1380-200-M320		-12	-12	X	X
FT1380-200-M370	-16	-16		X	X
FT1380-200-M420			-16		X
FT1382-200-M465	-20	-20			X

†Die cage used to crimp Winner hose with two piece Winner fitting

††Die cage used to crimp Winner hose with 4S fitting

**Note:** Visit the Eaton PowerSource Crimp Specs tool at [www.eatonpowersource.com/crimp-specs/](http://www.eatonpowersource.com/crimp-specs/) to find the tooling needed for all of the hoses and fittings you plan to crimp

### Specifications

#### Dimensions:

22" high x 9" wide x 11" deep

**Weight:** 65 lbs

Available with bench and truck mount brackets



Bench mount



Truck mount

### Capabilities

**Braided hose:** -4 thru -20

**Spiral hose:** -6 thru -16

### Features

- Can be mounted on service vehicles or bench tops
- Can be used remotely, 65lbs
- Can be powered with virtually any 10,000 psi hydraulic power source (minimum of 36 cu. inch pump reservoir capacity is required)
- Utilizes existing FT1380 dies

### Benefits

- Color-coded collar for core hose products makes setup fast and easy
- Easily transported between job sites
- Versatile power source options
- Lower investment cost than other variable crimpers
- Comes with high efficiency PTFE grease



## Crimp machine part numbers

**ET1187-001** Bench mount machine, no pump, no tooling (includes bracket)—for premium hose GH681/H180, GH781/H280, GH493/H430

**ET1187-002** Truck mount machine, no pump, no tooling (includes bracket)—for premium hose GH681/H180, GH781/H280, GH493/H430

**ET1187-003** Bench mount machine, no pump, no tooling (includes bracket)—for Winner hose EC115, EC215, EC415

**ET1187-004** Truck mount machine, no pump, no tooling (includes bracket)—for Winner hose EC115, EC215, EC415

**ET1187C-0017** Bench mount bracket (separate)

**ET1187C-0019** Truck mount bracket (separate)

## \*Pump part numbers

**ET1000PK-001** 2-Stage hand pump

**ET1000PK-002** Air/hydraulic pump

**ET1000PK-003** 110v electric pump

**ET1000PK-004** 12v DC electric pump

\*These pump kits include the pump, connecting hose assembly, and all of the adapters necessary to connect the pump to the ET1187 crimp machine

## Accessory part numbers

**T-400-G** 1.5 oz. tube, high efficiency PTFE grease

**FF91455** 16 oz. can, high efficiency PTFE grease

**ET1187C-0008PR** Replacement barrel for the ET1187-001 or ET1187-002 machine (for premium hose GH681/H180, GH781/H280, GH493/H430)

**ET1187C-0008WR** Replacement barrel for the ET1187-003 or ET1187-004 machine (for Winner hose EC115, EC215, EC415)

**ET1187C-0009PR** Replacement knob for the ET1187-001 or ET1187-002 machine (for premium hose GH681/H180, GH781/H280, GH493/H430)

**ET1187C-0009WR** Replacement knob for the ET1187-003 or ET1187-004 machine (for Winner hose EC115, EC215, EC415)

## Ordering options

Place your order for the desired machine, pump, and tooling separately, following the chart below. Tooling can also be ordered a la carte. Visit the Eaton PowerSource Crimp Specs tool at [www.eatonpowersource.com/crimp-specs/](http://www.eatonpowersource.com/crimp-specs/) to find the tooling needed for all of the hoses and fittings you plan to crimp.

Select your base machine	Select your pump kit	Select your tooling package
<b>ET1187-001</b> Base machine with bench mount only	<b>ET1000PK-003</b> 110v pump kit	<b>ET4020TP-0002</b>
<b>ET1187-002</b> Base machine with truck mount only	<b>ET1000PK-002</b> A/H pump kit	<b>ET4020TP-0003</b>
<b>ET1187-003</b> Base machine with bench mount only (for Winner hose EC115, EC215, EC415)	<b>ET1000PK-004</b> 12v pump kit	
<b>ET1187-004</b> Base machine with truck mount only (for Winner hose EC115, EC215, EC415)	<b>ET1000PK-001</b> Hand pump kit	

**Note:** All available pump kits shown include hose assembly and are CSA compliant

# Portable crimp machines

## ET1000

The portable ET1000 crimp machine boasts a broad crimp capability with an ease-of-use that is sure to please hose assemblers. With four pump options—air/hydraulic, hand, 110v, or 12v DC—this portable machine can travel to the worksite. The machine comes equipped with a stand pre-drilled for mounting to a workbench or table-top.



### Tooling options

Tooling	Tooling capabilities			Tooling packages		
	Die cage part #	1 wire braid	2 wire braid	Spiral hose 4S	*ET1000TP-1002 New placement package	*ET1000TP-1001 Conversion package
ET313DC-4Z	-4	-4			X	X
ET313DC-5Z	-5	-5				
ET313DC-6Z	-6	-6			X	X
ET313DC-8Z	-8	-8			X	X
ET313DC-10Z	-10	-10				
ET1000DC-12Z	-12	-12			X	X
ET1000DC-16Z	-16	-16			X	X
ET313DC-4S6			-6			
ET313DC-4S8			-8		X	X
ET313DC-4S10			-10			
ET1000DC-4S12			-12		X	X
ET1000DC-4S16			-16		X	X

\*ET1000TP-1002 includes the following spacer rings—ET425SR-150A, ET313SR-090A, ET313SR-030D

\*ET1000TP-1002 includes pusher extension—ET1000C-0012

\*ET1000TP-1002 includes adapter ring—ET1000AR-001

\*ET1000TP-1001 includes the following spacer rings—ET425SR-150A, ET313SR-090A

**Note:** Visit the Eaton PowerSource Crimp Specs tool at [www.eatonpowersource.com/crimp-specs/](http://www.eatonpowersource.com/crimp-specs/) to find the tooling needed for all of the hoses and fittings you plan to crimp

### Crimp machine part numbers

**ET1000-001** Base machine

### Crimp machine and tooling package part numbers

**ET1000-020** Contains ET1000 crimper, 110v pump kit, and ET1000TP-1002 tooling package

**ET1000-021** Contains ET1000 crimper, air/hydraulic pump kit, and ET1000TP-1002 tooling package

### Specifications

#### Dimensions:

22" high x 16" wide x 14" deep

#### Weight:

70 lbs

Allows for work bench or table top mounting

### Capabilities

**Braided hose:** -4 thru -16

**Spiral hose:** -6 thru -16

### Features

- Portable, positive stop, economical
- Can be mounted on service vehicles
- Utilizes 2-piece collet assemblies
- Spacer rings control the crimp diameter

### Benefits

- Sliding pusher allows for easier fitting insertion into the machine
- Simple positive-stop crimp diameter control system for consistent crimping time after time with no operator adjustments required
- Easily transported between job sites
- Versatile power source options
- Electricity is required only when using an electric pump
- Comes with high efficiency PTFE grease

**\*Pump part numbers**

**ET1000PK-001** Hand pump

**ET1000PK-002** Air/hydraulic pump

**ET1000PK-003** 110 volt electric pump

**ET1000PK-004** 12 volt DC electric pump

\*Pump kits contain hose assembly and fittings to attach pump to machine

**Accessory part numbers**

**T-400-G** 1.5 oz. tube high efficiency PTFE grease

**FF91455** 16 oz. can, high efficiency PTFE grease

**Ordering options**

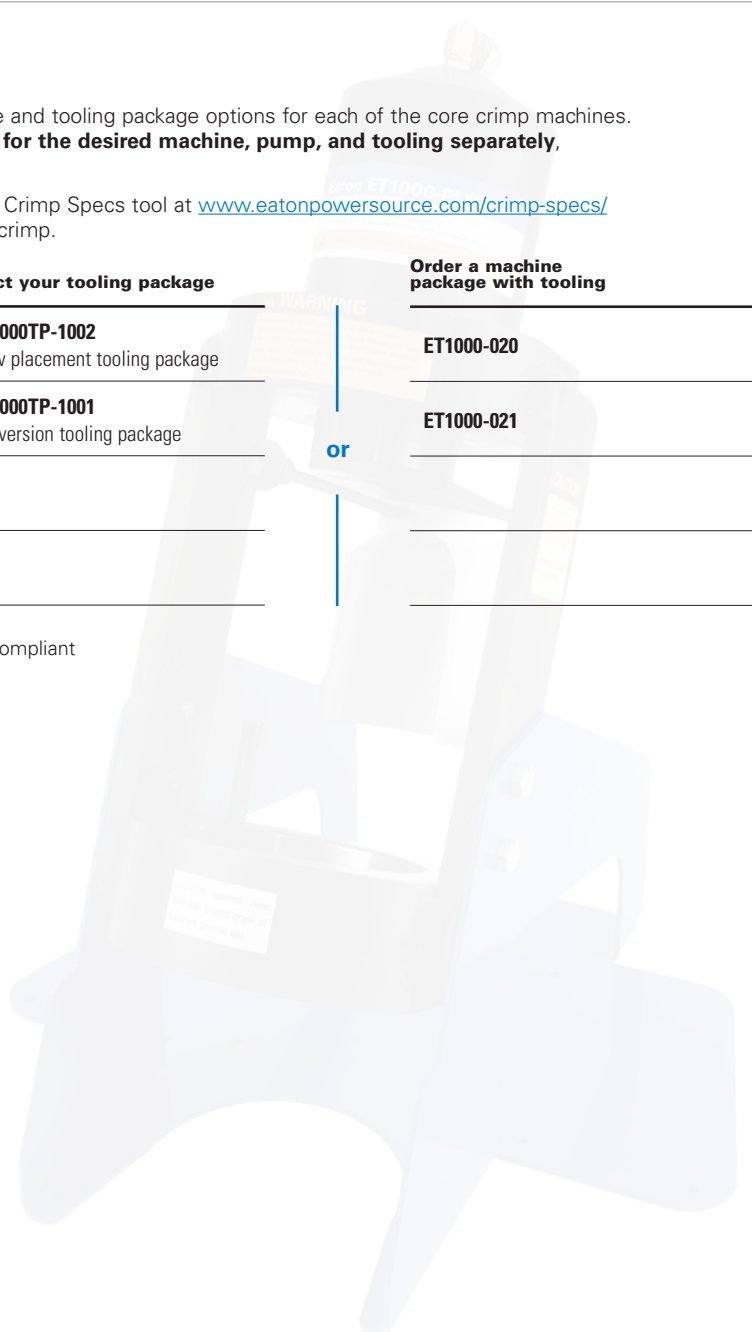
For your convenience, we have created one to two optimized machine and tooling package options for each of the core crimp machines. **If the available options do not meet your needs, place your order for the desired machine, pump, and tooling separately,** following the chart below.

**Tooling can also be ordered a la carte.** Visit the Eaton PowerSource Crimp Specs tool at [www.eatonpowersource.com/crimp-specs/](http://www.eatonpowersource.com/crimp-specs/) to find the tooling needed for all of the hoses and fittings you plan to crimp.

Select your base machine	Select your pump kit	Select your tooling package	Order a machine package with tooling
<b>ET1000-001</b> Base ET1000 Machine	<b>ET1000PK-003</b> 110v pump kit	<b>ET1000TP-1002</b> New placement tooling package	<b>ET1000-020</b>
	<b>ET1000PK-002</b> A/H pump kit	<b>ET1000TP-1001</b> Conversion tooling package	<b>ET1000-021</b>
	<b>ET1000PK-004</b> 12v pump kit		
	<b>ET1000PK-001</b> Hand pump kit		

**or**

**Note:** All available pump kits shown include hose assembly and are CSA compliant



# General purpose crimp machines

## FT1380

The FT1380 crimp machine from Eaton crimps all your hose needs up to and including -20 spiral wire hose. The FT1380 is electronically controlled to give fast, accurate crimps the first time and every time you need a hose assembly. The electronic keypad is easy to adjust, with up to 10 programmable crimp settings. For hose styles and sizes used less frequently, simply enter the 3 digit code of that hose.



### Tooling options

Tooling	Tooling capabilities			Tooling packages		
	Die cage part #	1 wire braid TTC/Z/Winner	2 wire braid TTC/Z/Winner	Spiral hose 4S fitting	ET4020TP-0002	ET4020TP-0003
FT1380-200-M150		-4	-4		X	X
FT1380-200-M180		-6	-4†		X	X
FT1380-200-M210		-8	-6	-6	X	X
FT1380-200-M240		-10	-8	-8††	X	X
FT1381-200-M280		-12	-10,-12†	-8,-10	X	X
FT1380-200-M320			-12	-12	X	X
FT1380-200-M370		-16	-16		X	X
FT1380-200-M420				-16		X
FT1382-200-M465		-20	-20	-20		X

†Die cage used to crimp designated hose diameter with two piece Winner fitting

††Die cage used to crimp Winner hose with 4S fitting

**Note:** Visit the Eaton PowerSource Crimp Specs tool at [www.eatonpowersource.com/crimp-specs/](http://www.eatonpowersource.com/crimp-specs/) to find the tooling needed for all of the hoses and fittings you plan to crimp

### Crimp machine part numbers

**FT1380-115** Base machine with 115v pump

**FT1380-115CSA** Base machine with 115v pump, CSA approved

**FT1380-230** Base machine with 230v pump

**FT1380-230CSA** Base machine with 230v pump, CSA approved

### Crimp machine and tooling package part numbers

**FT1380-115-8** Contains FT1380 crimper, 115v pump, and ET4020TP-0003 tooling package

### Pump part numbers

All pumps are included with machine purchase. To review machine and pump package options please refer to the ordering options on the following page.

### Specifications

#### Dimensions:

28.5" high x 12.75" wide x 25.75" deep

**Weight:** 238 lbs

Allows for work bench or table top mounting

### Capabilities

**Braided hose:** -4 thru -20

**Spiral hose:** -6 thru -20

### Features

- User-friendly operation to minimize training and mistakes
- Pre-set crimp settings and simple die cage insertion reduce setup time
- Electronic controls for minimal maintenance
- Upright design for easy hose insertion
- Compact design that requires little space

### Benefits

- Easy and quick to electronically enter crimp settings
- Can pre-program 10 most popular crimp settings
- Die cages easily slip in and out of machine
- Machine capable of swaging thermoplastic hose and hose fittings
- Comes with high efficiency PTFE grease



## Accessory part numbers

**FT1380-2-4** Optional die holder kit—kit includes 4 die holder plates each of which will hold 2 die cages. Holes are pre-drilled on base of FT1380 machine to accept these 4 plates.

**FT1380-4** Optional fitting backstop—kit includes backstop and 5/32" hex wrench. The backstop allows the FT1380 to crimp PTFE hose and to be utilized for a fitting locator to increase efficiency.

**FT1330-XL** TTC/Z fitting locators

**FT1380-XL** 4S fitting locators

**T-400-G** 1.5 oz. tube high efficiency PTFE grease

**FF91455** 16 oz. can, high efficiency PTFE grease

**FT1380-2-9** Die cage repair kits for FT1380-200-size, FT1380-275-size

## Ordering options

For your convenience, we have created one to two optimized machine and tooling package options for each of the core crimp machines. **If the available options do not meet your needs, place your order for the desired machine, pump, and tooling separately,** following the chart below.

**Tooling can also be ordered a la carte.** Visit the Eaton PowerSource Crimp Specs tool at [www.eatonpowersource.com/crimp-specs/](http://www.eatonpowersource.com/crimp-specs/) to find the tooling needed for all of the hoses and fittings you plan to crimp.

Select your base machine	Pump included	Select your tooling package	Order a machine package with tooling:
<b>FT1380-115</b> Base machine with 115v pump	115v pump included	<b>ET4020TP-0003</b>	<b>FT1380-115-8</b>
<b>FT1380-115CSA</b> Base machine with 115v pump, CSA approved	115v pump included	<b>ET4020TP-0002</b>	
<b>FT1380-230</b> Base machine with 230v pump	230v pump included		
<b>FT1380-230CSA</b> Base machine with 230v pump, CSA approved	230v pump included		

**Note:** Consider an alternative positive stop machine when crimping large quantities of -20 90 degree fittings

## Specialty crimp die cages

Tooling	Tooling capabilities	
Die cage part #	Hose size	Hose style
<b>FT1380-275-M070</b>	-03	PTFE
<b>FT1380-275-M090</b>	-03 Synflex, -04, -05 PTFE	Synflex, PTFE
<b>FT1380-275-M120</b>	-04 Synflex, -06 PTFE	Synflex, PTFE
<b>FT1382-275-M370</b>	-16	Two-piece Winner
<b>FT1382-275-M520</b>	-20	6S
<b>*FT1380-275-R5-04</b>	-04	Truck and fuel 100R5
<b>*FT1380-275-R5-05</b>	-05	Truck and fuel 100R5
<b>*FT1380-275-R5-06</b>	-06	Truck and fuel 100R5
<b>*FT1380-275-R5-08</b>	-08	Truck and fuel 100R5
<b>*FT1380-275-R5-10</b>	-10	Truck and fuel 100R5
<b>*FT1380-275-R5-12</b>	-12	Truck and fuel 100R5
<b>*FT1380-275-R5-16</b>	-16	Truck and fuel 100R5
<b>*FT1380-275-R5-20</b>	-20	Truck and fuel 100R5

\*Tooling above for use with Aeroquip hose and fittings

# General purpose crimp machines

## T-420

The T-420 is a versatile machine ideal for your shop, factory, construction, and mine locations. Large capacity combined with lever-activated crimping gives you wide coverage and a quick and simple way to make factory-quality hose assemblies.



### Tooling options

Tooling	Tooling capabilities			Tooling packages	
	1 wire braid	2 wire braid	Spiral hose 4S	T420TP-1001	*T420TP-1002 (for Winner hose with TTC/Z fittings)
Die cage part #					
ET425DC-4Z	-4	-4		X	X
ET425DC-5Z	-5	-5			
ET425DC-6Z	-6	-6		X	X
ET425DC-8Z	-8	-8		X	X
ET425DC-10Z	-10	-10			
ET425DC-12Z	-12	-12		X	X
ET425DC-16Z	-16	-16		X	X
ET425DC-20Z	-20	-20			X
ET425DC-4S6			-6		X
ET425DC-4S8			-8	X	X
ET425DC-4S10			-10		
ET425DC-4S12			-12	X	X
ET425DC-4S16			-16	X	X
ET425DC-4S20			-20	X	X

\*T-420-26 die ring included with base machine

\*T420TP-1001 includes spacer ring ET425SR-105A

\*T420TP-1001 includes adapter ring ET425AR-14

\*T420TP-1002 includes adapter ring ET425AR-14

\*T420TP-1002 includes the following spacer rings—ET425SR-075A, ET425SR-030D, ET425SR-015A, ET425SR-060D, ET425SR-030A, ET425SR-045A, ET425SR-015D, ET425SR-060A, ET425SR-165A, ET425SR-105A, ET425SR-090A

**Note:** Visit the Eaton PowerSource Crimp Specs tool at [www.eatonpowersource.com/crimp-specs/](http://www.eatonpowersource.com/crimp-specs/) to find the tooling needed for all of the hoses and fittings you plan to crimp

### Crimp machine part numbers

**T-420-1** Base T-420 machine

**T-420-1CSA** Base T-420 machine, CSA approved

### Specifications

#### Dimensions:

22" high x 10" wide x  
20-1/2" deep

**Weight:** 210 lbs

Bench and C-40X cabinet  
mounting options

### Capabilities

**Braided hose:** -4 thru -20

**Spiral hose:** -6 thru -20

### Features

- Positive stop, economical
- Can be mounted on a bench or the C-40X cabinet
- Utilizes 2-piece collet assemblies
- Spacer rings control the crimp diameter

### Benefits

- Simple positive-stop crimp diameter control system for consistent crimping time after time with no operator adjustments required
- Versatile power source options
- Comes with high efficiency PTFE grease

### Crimp machine and tooling package part numbers

**T-420-001** Contains T-420 crimper, 220v pump kit, T420TP-1001 tooling package

**T-420-002** Contains T-420 crimper, 110v pump kit, T420TP-1001 tooling package

**T-420-001CSA** Contains T-420 crimper, 220v pump kit, T420TP-1001 tooling package, CSA approved

**T-420-002CSA** Contains T-420 crimper, 110v pump kit, T420TP-1001 tooling package, CSA approved

### Pump part numbers

**ET420-007** 110 volt electric pump

**ET420-007CSA** 110 volt electric pump, CSA approved

**ET420-008** 220 volt electric pump

**ET420-008CSA** 220 volt electric pump, CSA approved

### Accessory part numbers

**T-400-G** 1.5 oz. tube high efficiency PTFE grease

**FF91455** 16 oz. can, high efficiency PTFE grease

### Ordering options

For your convenience, we have created one to two optimized machine and tooling package options for each of the core crimp machines. **If the available options do not meet your needs, place your order for the desired machine, pump, and tooling separately,** following the chart below.

**Tooling can also be ordered a la carte.** Visit the Eaton PowerSource Crimp Specs tool at [www.eatonpowersource.com/crimp-specs/](http://www.eatonpowersource.com/crimp-specs/) to find the tooling needed for all of the hoses and fittings you plan to crimp.

Select your base machine	Select your pump kit	Select your tooling package	Order a machine package with tooling
<b>T-420-1</b> Base T-420 machine	<b>ET420-007</b> 110v pump	<b>T420TP-1001</b>	<b>T-420-001</b>
<b>T-420-1CSA</b> Base T-420 machine, CSA approved	<b>ET420-007CSA</b> 110v pump, CSA approved	<b>T420TP-1002</b> (for Winner hose with TTC/Z fittings)	<b>T-420-002</b>
	<b>ET420-008</b> 220v pump		<b>T-420-001CSA</b>
	<b>ET420-008CSA</b> 220v pump, CSA approved		<b>T-420-002CSA</b>

or

# General purpose crimp machines

## FT1390

The FT1390 crimp machine is a stand-alone machine and will crimp up to 2" braided, 2" four spiral, and 2" six spiral hydraulic hose assemblies. It boasts a programmable electronic keypad with 10 presets.



This keypad simplifies the hose crimping operation by allowing the machine operator to enter a predetermined setting for a specific hose type and size. The ten most often used crimp settings can be stored for one-touch retrieval. The machine will automatically crimp to the exact crimp diameter required for that hose type and size. The electronic crimp machine settings eliminate the need for spacers or shims in the crimping operation.

### Tooling options

Tooling	Tooling capabilities				Tooling packages	
Die cage part #	1 wire braid	2 wire braid	Spiral hose 4S	Spiral hose 6S	ET4040TP-0007	ET4040TP-0008
FT1307-200-M150	-4	-4			X	
FT1307-200-M180	-6				X	
FT1307-200-M210	-8	-6	-6		X	
FT1307-200-M240	-10	-8			X	
FT1307-200-M280	-12	-10, -12†	-8, -10		X	
FT1307-200-M320		-12			X	
FT1307-200-M370	-16	-16			X	
FT1307-200-M420	-20††		-16		X	
FT1307-200-M465	-20	-20			X	
FT1307-200-M520	-24				X	
FT1307-200-M550	-32††	-24			X	
FT1307-200-M690	-32	-32			X	
FT1209-200-82			-12		X	
FT1209-200-15		-24†				
FT1209-200-46		-20†				
*FT1390-200-14			-20			X
*FT1390-200-20			-24			X
*FT1390-200-23			-32			X
*FT1390-200-15				-20		
*FT1390-200-16				-24		
*FT1390-200-21				-32		

\*Die cages are hinged for ease of use when crimping large elbows

†Die cage used to crimp designated hose diameter with two piece Winner fitting

††Die Cage used to crimp Winner Hose with TTC fitting

**Note:** Two piece Winner fitting not qualified with -32 core hose products (used with EC110-32 and GH506-32)

**Note:** Visit the Eaton PowerSource Crimp Specs tool at [www.eatonpowersource.com/crimp-specs/](http://www.eatonpowersource.com/crimp-specs/) to find the tooling needed for all of the hoses and fittings you plan to crimp

### Specifications

**Dimensions:**  
49" high, 29" wide, 28" deep

**Weight:** 825 lbs

### Capabilities

**Braided hose:** -4 thru -32

**Spiral hose:** -6 thru -32

### Features

- Front-end loading design
- Electronic keypad control of crimp diameter
- Power return stroke, return limit control
- Drop-in tooling (crimp die cages)
- Backstop fitting locator
- Worklamp equipped

### Benefits

- Easy and quick to electronically enter crimp setting
- Can pre-program 10 most popular crimp settings
- Die cages easily slip in and out of machine
- Comes with high efficiency PTFE grease



### Crimp machine part numbers

**FT1390-115** Base machine with 115v pump

**FT1390-115CSA** Base machine with 115v pump, CSA approved

**FT1390-230** Base machine with 230v pump

**FT1390-230CSA** Base machine with 230v pump, CSA approved

### Crimp machine and tooling package part numbers

**FT1390-115-12** Contains FT1390 crimper with 115v pump, and ET4020TP-0007 tooling package

### Pump part numbers

All pumps are included with machine purchase. To review machine and pump package options please refer to the ordering options below.

### Accessory part numbers

**T-400-G** 1.5 oz. tube high efficiency PTFE grease

**FF91455** 16 oz. can, high efficiency PTFE grease

### Ordering options

For your convenience, we have created one to two optimized machine and tooling package options for each of the core crimp machines. **If the available options do not meet your needs, place your order for the desired machine, pump, and tooling separately**, following the chart below.

**Tooling can also be ordered a la carte.** Visit the Eaton PowerSource Crimp Specs tool at [www.eatonpowersource.com/crimp-specs/](http://www.eatonpowersource.com/crimp-specs/) to find the tooling needed for all of the hoses and fittings you plan to crimp.

Select your base machine	Pump included	Select your tooling package	Order a machine package with tooling
<b>FT1390-115</b> Base machine with 115v pump	<b>FT1390-115</b> 115v pump included	<b>ET4040TP-0007</b>	<b>FT1390-115-12</b>
<b>FT1390-115CSA</b> Base machine with 115v pump, CSA approved	<b>FT1390-115CSA</b> 115v pump included	<b>ET4040TP-0008</b>	
<b>FT1390-230</b> Base machine with 230v pump	<b>FT1390-230</b> 230v pump included		
<b>FT1390-230CSA</b> Base machine with 230v pump, CSA approved	<b>FT1390-230CSA</b> 230v pump included		

or

# General purpose crimp machines

## FT1390 (continued)



### Specialty crimp die cages

Tooling	Tooling capabilities	
Die cage part #	Hose size	Hose style
FT1209-200-14	-20	4S
FT1209-200-15	-20	6S
FT1209-200-16	-24	6S
FT1209-200-20	-24	4S
FT1209-200-21	-32	6S
FT1209-200-23	-32	4S
FT1307-200-M070	-03 PTFE	PTFE
FT1307-200-M090	-03 Synflex, -04, -05 PTFE	Synflex, PTFE
FT1307-200-M120	-04 Synflex, -06 PTFE	Synflex, PTFE

**Note:** Additional dies and die cage assemblies also available. Refer to website or contact Eaton

**Note:** FT1209-200-size & FT1390-200-size are for use with internal skive and 4S/6S fittings (SAE100R11 & SAE100R13 hose styles).

**Note:** FT1390-200-size dies cages are hinged to allow ease of use when crimping large elbows

## Barrel crimp die cages

Die cage part #	Hose size	Hose style
FT1307-200-R5-04	-04	Truck and fuel 100R5
FT1307-200-R5-05	-05	Truck and fuel 100R5
FT1307-200-R5-06	-06	Truck and fuel 100R5
FT1307-200-R5-08	-08	Truck and fuel 100R5
FT1307-200-R5-10	-10	Truck and fuel 100R5
FT1307-200-R5-12	-12	Truck and fuel 100R5
FT1307-200-R5-16	-16	Truck and fuel 100R5
FT1307-200-R5-20	-20	Truck and fuel 100R5
FT1307-200-R5-24	-24	Truck and fuel 100R5
FT1307-200-R5-32	-32	Truck and fuel 100R5
*FT1392-200-R5-24	-24	Truck and fuel 100R5
*FT1392-200-R5-32	-32	Truck and fuel 100R5

\*Hinged die cage

**Note:** Tooling above for use with Aeroquip hose and fittings

## Die cage repair kits

Die cage part #	Order
FT1307-200-size	FT1307-2-9
FT1390-200-size	FT1390-2-9
FT1209-200-size	FT1209-2-9

# General purpose crimp machines

## ET4001

The ET4001 is ideal for factory, high-performance machine operations, construction and mine locations. This machine offers the capabilities of crimping all of the crimp-style hose ends through -32. With this coverage, this heavy-duty crimper can handle all of your crimping needs.



### Tooling options

Tooling	Tooling capabilities				Tooling packages		
	1 wire braid	2 wire braid	Spiral hose 4S	Spiral hose 6S	*ET4001TP-1002 new placement package	*ET4001TP-1001 conversion package	*ET4001TP-1003 (for Winner hose with TTC/Z fittings)
ET525DC-4Z	-4	-4			X	X	X
ET525DC-5Z	-5	-5					X
ET525DC-6Z	-6	-6			X	X	X
ET525DC-8Z	-8	-8			X	X	X
ET525DC-10Z	-10	-10					X
ET525DC-12Z	-12	-12			X	X	X
ET525DC-16Z	-16	-16			X	X	X
ET525DC-20Z	-20	-20					X
ET525DC-24Z	-24	-24					X
ET525DC-32Z	-32	-32					
ET525DC-4S6			-6				X
ET525DC-4S8			-8		X	X	X
ET525DC-4S10			-10				
ET525DC-4S12			-12		X	X	X
ET525DC-4S16			-16		X	X	X
ET525DC-4S20			-20		X	X	X
ET575DC-4S24			-24		X	X	X
ET575DC-4S32			-32		X	X	X
ET525DC-6S20				-20			
ET575DC-6S24				-24			
ET575DC-6S32				-32			

\*ET4000AR-001 adapter ring included with base machine

\*ET4001TP-1002 includes the following spacer rings—ET575SR-135A, ET525SR-120A, ET525SR-180A, ET525SR-225A, ET525SR-240A

\*ET4001TP-1002 includes adapter ring ET4000AR-002

\*ET4001TP-1001 includes the following spacer rings—ET575SR-135A, ET525SR-120A

\*ET4001TP-1003 includes the following spacer rings—ET525SR-030A, ET575SR-120A, ET575SR-015A, ET525SR-075A, ET525SR-015A, ET525SR-180A, ET525SR-090A, ET525SR-075D, ET525SR-045A, ET525SR-240A, ET525SR-015D, ET525SR-060A, ET525SR-195A, ET525SR-120A, ET525SR-105A

**Note:** Visit the Eaton PowerSource Crimp Specs tool at [www.eatonpowersource.com/crimp-specs/](http://www.eatonpowersource.com/crimp-specs/) to find the tooling needed for all of the hoses and fittings you plan to crimp

### Specifications

**Dimensions:**  
29" high, 12" wide, 21" deep

**Weight:** 550 lbs

Bench or Work Table  
Mounting

### Capabilities

**Braided Hose:** -4 thru -32

**Spiral Hose:** -6 thru -32

### Features

- Shop / work table mount, positive stop
- Features a two-stage pump providing high flow at low pressure for fast ram approach and low flow at high pressure for actual crimping

### Benefits

- Ideal for factory, construction and mine locations
- Crimps up to 2" 6 wire spiral hose
- Comes with high efficiency PTFE grease



### Crimp machine part numbers

**ET4001-004** Base ET4001 machine with hose kit, pump, work lamp

**ET4001-004CSA** Base ET4001 machine with hose kit, pump, work lamp, CSA approved

### Pump part numbers

**ET4001P-002** 220v single phase electric pump

**T-410-22** 36" pump to press hose assembly

**ET4001P-002CSA** 220v single phase electric pump, CSA approved

### Crimp machine and tooling package part numbers

**ET4001-015** Contains ET4001 crimper, 220v pump kit, and ET4001TP-1002 tooling package

**ET4001-015CSA** Contains ET4001 crimper, 220v pump kit, and ET4001TP-1002 tooling package, CSA approved

### Accessory part numbers

**T-400-G** 1.5 oz. tube high efficiency PTFE grease

**FF91455** 16 oz. can, high efficiency PTFE grease

**ET4001C-0017** Magnetic work lamp

### Ordering options

For your convenience, we have created one to two optimized machine and tooling package options for each of the core crimp machines. **If the available options do not meet your needs, place your order for the desired machine, pump, and tooling separately,** following the chart below.

**Tooling can also be ordered a la carte.** Visit the Eaton PowerSource Crimp Specs tool at [www.eatonpowersource.com/crimp-specs/](http://www.eatonpowersource.com/crimp-specs/) to find the tooling needed for all of the hoses and fittings you plan to crimp.

Select your base machine	Pump included	Select your tooling package	Order a machine package with tooling
<b>ET4001-004</b> Base ET4001 machine with hose kit, pump, work lamp	<b>ET4001-004</b> 220v pump included	<b>ET4001TP-1002</b> New placement tooling package	<b>ET4001-015</b>
<b>ET4001-004CSA</b> Base ET4001 machine with hose kit, pump, work lamp, CSA approved	<b>ET4001-004CSA</b> 220v pump included	<b>ET4001TP-1003</b> (for Winner hose with TTC/Z fittings)	<b>ET4001-015CSA</b>
		<b>ET4001TP-1001</b> Conversion tooling package	

or

## ET5050

The ET5050 is designed for high industrial production and comes pre-programmed with all of Eaton's hose and hose fitting crimp specifications, crimp profile details, and machine settings in order to crimp to Eaton's specifications. It crimps up to 2" spiral, 2" braided and 4" industrial in Eaton core hose products as well as a wide variety of specialty hose.



### Tooling packages: standard die

Standard die set part #	Die size		Die length		Minimum		Crimp range maximum	
	mm	in	mm	in	mm	in	mm	in
ET5040DC-M070S	7,0	0.276	82,0	3.23	7,0	0.28	9,0	0.35
ET5040DC-M090S	9,0	0.354	82,0	3.23	9,0	0.35	12,0	0.47
ET5040DC-M120S	12,0	0.472	82,0	3.23	12,0	0.47	15,0	0.59
*ET5040DC-M150S	15,0	0.590	82,0	3.23	15,0	0.59	18,0	0.71
*ET5040DC-M180S	18,0	0.709	82,0	3.23	18,0	0.71	21,0	0.83
*ET5040DC-M210S	21,0	0.827	82,0	3.23	21,0	0.83	24,0	0.95
*ET5040DC-M240S	24,0	0.945	82,0	3.23	24,0	0.95	28,0	1.10
*ET5040 DC-M280S	28,0	1.102	82,0	3.23	28,0	1.10	32,0	1.26
ET5040DC-M320S†	32,0	1.259	82,0	3.23	32,0	1.26	37,0	1.46
ET5040DC-M355S	35,5	1.398	82,0	3.23	35,5	1.40	39,5	1.56
*ET5040DC-M370S	37,0	1.457	82,0	3.23	37,0	1.46	42,0	1.66
*ET5040DC-M420S	42,0	1.654	82,0	3.23	42,0	1.66	46,5	1.83
ET5040DC-M450S	45,0	1.772	82,0	3.23	45,0	1.77	50,0	1.97
*ET5040DC-M465S	46,5	1.831	82,0	3.23	46,5	1.83	52,0	2.05
ET5040DC-M505S	50,5	1.988	82,0	3.23	50,5	1.99	54,0	2.13
*ET5040DC-M520S	52,0	2.047	82,0	3.23	52,0	2.05	55,0	2.17
*ET5040DC-M550S	55,0	2.165	82,0	3.23	55,0	2.17	60,0	2.36
ET5040DC-M570S	57,0	2.244	82,0	3.23	57,0	2.24	64,0	2.52
ET5040DC-M590S	59,0	2.323	82,0	3.23	59,0	2.32	66,0	2.60
ET5040DC-M620S	62,0	2.441	82,0	3.23	62,0	2.44	70,0	2.76
*ET5040DC-M690S	69,0	2.717	82,0	3.23	69,0	2.72	73,0	2.87
ET5040DC-M720S	72,0	2.835	82,0	3.23	72,0	2.84	78,0	3.07
ET5040DC-M775S	77,5	3.051	82,0	3.23	77,5	3.05	85,5	3.37
ET5040DC-M790S	79,0	3.110	82,0	3.23	79,0	3.11	88,0	88,0

\*Included in the ET5040C-0023 standard die kit

†Supplied with all ET5040 crimp machines and required for calibration

ET5040C-0001 adapter die required for all M series dies and comes standard in each KT machine package

### Specifications

#### Dimensions:

67" high x 24" wide x 48" deep

**Weight:** 1,851 lbs (without mounting rack and dies)

#### Capabilities

**Spiral hose:** up to 2" (DN51)

**Braided hose:** up to 3" (DN80)

**Industrial hose:** up to 6" (DN102)

#### Features

- 280 tons of crimp force
- Designed for high production
- Pre-programmed with Eaton crimp specs and machine settings
- Crimps up to 2" spiral, 2" braided, 4" industrial in core products
- Crimps textile braid, wire braid, spiral hydraulic, thermoplastic, PTFE, air conditioning, and other industrial and specialty hose constructions

#### Benefits

- Ease of use and fast cycle times increase productivity
- Pre-loaded Eaton crimp specs reduce errors and scrap
- Fast and safe crimp operation
- Grease free dies allow for much easier and cleaner die changeout and reduce chance for operator error due to not having to apply grease to dies and crimp ring
- Convenient die storage rack allows easy access to crimp dies and tooling

## Tooling: large bore die

Standard die set part #	Die size		Die length		Minimum		Crimp range maximum	
	mm	in	mm	in	mm	in	mm	in
ET5040PBL-M740	74,0	2.913	118,0	4.65	74,0	2.92	83,0	3.26
ET5040PBL-M780	78,0	3.070	118,0	4.65	78,0	3.07	86,0	3.38
ET5040PBL-M840	84,0	3.307	118,0	4.65	84,0	3.31	92,0	3.62
ET5040PBL-M860	86,0	3.386	118,0	4.65	86,0	3.39	94,0	3.70
ET5040PBL-M900	90,0	3.543	118,0	4.65	90,0	3.55	99,0	3.89
ET5040PBL-M960	96,0	3.800	118,0	4.65	96,0	3.80	105,0	4.13
ET5040PBL-M1030	103,0	4.055	118,0	4.65	103,0	4.06	113,0	4.44
ET5040PBL-M1060	106,0	4.173	126,0	4.96	106,0	4.18	116,0	4.56
ET5040PBL-M1110	110,0	4.331	126,0	4.96	110,0	4.33	121,0	4.76
ET5040PBL-M1160	116,0	4.567	126,0	4.96	116,0	4.57	127,0	4.99
ET5040PBL-M1210	121,0	4.764	126,0	4.96	121,0	4.77	133,0	5.23
ET5040PBL-M1260	126,0	4.961	126,0	4.96	126,0	4.96	138,0	5.43
ET5040PBL-M1310	131,0	5.157	126,0	4.96	131,0	5.16	144,0	5.66

**Note:** Each set includes 8 individual dies

## 100R5 dies for the ET5050

Die part #	Hose size	Hose style
ET5040DC-R5-04	-04	Truck and fuel 100R5
ET5040DC-R5-05	-05	Truck and fuel 100R5
ET5040DC-R5-06	-06	Truck and fuel 100R5
ET5040DC-R5-08	-08	Truck and fuel 100R5
ET5040DC-R5-10	-10	Truck and fuel 100R5
ET5040DC-R5-12	-12	Truck and fuel 100R5
ET5040DC-R5-16	-16	Truck and fuel 100R5
ET5040DC-R5-20	-20	Truck and fuel 100R5
ET5040DC-R5-24	-24	Truck and fuel 100R5
ET5040DC-R5-32	-32	Truck and fuel 100R5

## \*Crimp machine part numbers

ET5050-001-230KT  
 ET5050-001-380KT  
 ET5050-001-400KT  
 ET5050-001-420KT  
 ET5050-001-440KT  
 ET5050-001-460KT  
 ET5050-001-480KT

\*All crimp machine part numbers come with the machine, calibration tooling, die installation tool, standard die package, adapter die package, double foot pedal and machine mounted storage rack

## ET5050 (continued)



### Pump part numbers

All pumps are included with machine purchase. To review machine and pump package options please refer to the following ordering options.

### Accessory part numbers

**\*ET5040C-0001†** Adapter die package (Supplied with ET5050 crimp machines. Required for use with ET5040DC style dies and used to calibrate machine.)

**\*ET5040C-0004** Die installation tool

**ET5040C-0006** Automatic backstop

**ET5040C-0007** Manual backstop

**ET5040C-0009, ET5050C-0009** Viewing mirror

**\*ET5040C-0014** Machine mounted die storage rack (includes insert holders)

**ET5040C-0016** Table top die storage rack (includes insert holders)

**\*ET5040C-0019†** Calibration tool (supplied with ET5050 crimp machines)

**\*ET5040C-0020** Double pedal foot switch

**\*ET5040C-0023** Includes 11 of the most popular standard ET5040DC style die sets

**ET5040DC-M320S†** 32mm die set

**ET5040DC-MXXX** Standard die sets

**ET5040PBL-MXXX** Large bore industrial hose die sets

**ET4001C-0017** Magnetic work lamp

\*Components included in machine kit packages "KT"

†Calibration tooling (supplied with all ET5050 base machines)

**Note:** Please note that ET5050 shares dies, crimp components, and some accessories with the ET5040



## Ordering options

**Tooling can also be ordered a la carte.** Visit the Eaton PowerSource Crimp Specs tool at [www.eatonpowersource.com/crimp-specs/](http://www.eatonpowersource.com/crimp-specs/) to find the tooling needed for all of the hoses and fittings you plan to crimp.

Select a machine kit	Kit includes	Pump included
<b>ET5050-001-230KT</b>	ET5050-001-230 machine, calibration tooling, die installation tool, standard die package, adapter die package, double foot pedal and machine mounted storage rack	230v 3 phase pump included
<b>ET5050-001-380KT</b>	ET5050-001-380 machine, calibration tooling, die installation tool, standard die package, adapter die package, double foot pedal and machine mounted storage rack	380v 3 phase pump included
<b>ET5050-001-400KT</b>	ET5050-001-400 machine, calibration tooling, die installation tool, standard die package, adapter die package, double foot pedal and machine mounted storage rack	400v 3 phase pump included
<b>ET5050-001-420KT</b>	ET5050-001-420 machine, calibration tooling, die installation tool, standard die package, adapter die package, double foot pedal and machine mounted storage rack	420v 3 phase pump included
<b>ET5050-001-440KT</b>	ET5050-001-440 machine, calibration tooling, die installation tool, standard die package, adapter die package, double foot pedal and machine mounted storage rack	440v 3 phase pump included
<b>ET5050-001-460KT</b>	ET5050-001-460 machine, calibration tooling, die installation tool, standard die package, adapter die package, double foot pedal and machine mounted storage rack	460v 3 phase pump included
<b>ET5050-001-480KT</b>	ET5050-001-480 machine, calibration tooling, die installation tool, standard die package, adapter die package, double foot pedal and machine mounted storage rack	480v 3 phase pump included

# Machine and tooling order process

For your convenience, we have created one to two optimized machine and tooling package options for each of the core crimp machines. If the available options do not meet your needs, place your order for the desired machine, pump, and tooling separately, following the chart below.

Machine	Part description	110v pump kit	220v pump kit	A/H pump kit
	<b>ET1187-001</b>	Base ET1187 machine with bench mount bracket, no pump	ET1000PK-003	ET1000PK-002
	<b>ET1187-002</b>	Base ET1187 machine with truck mount bracket, no pump	ET1000PK-003	ET1000PK-002
	<b>ET1187-003</b>	Base ET1187 Winner machine with bench mount bracket, no pump	ET1000PK-003	ET1000PK-002
	<b>ET1187-004</b>	Base ET1187 Winner machine with truck mount bracket, no pump	ET1000PK-003	ET1000PK-002
	<b>ET1000-001</b>	Base ET1000 machine, no pump	ET1000PK-003	ET1000PK-002
	<b>FT1380-115</b>	115v machine		
	<b>FT1380-115CSA</b>	115v machine CSA		
	<b>FT1380-230</b>	230v machine		
	<b>FT1380-230CSA</b>	230v machine CSA		
	<b>T-420-1</b>	Machine	ET420-007	ET420-008
	<b>T-420-1CSA</b>	Machine	ET420-007CSA	ET420-008CSA
	<b>FT1390-115</b>	115v machine		
	<b>FT1390-115CSA</b>	115v machine CSA		
	<b>FT1390-230</b>	230v machine		
	<b>FT1390-230CSA</b>	230v machine CSA		
	<b>ET4001-004</b>	Base ET4001 machine with hose kit, pump, work lamp		
	<b>ET4001-004CSA</b>	Base ET4001 machine with hose kit, pump, work lamp CSA approved		
	<b>ET5050-001-230KT</b>	ET5050 machine with tooling		
	<b>ET5050-001-380KT</b>	ET5050 machine with tooling		
	<b>ET5050-001-400KT</b>	ET5050 machine with tooling		
	<b>ET5050-001-420KT</b>	ET5050 machine with tooling		
	<b>ET5050-001-440KT</b>	ET5050 machine with tooling		
	<b>ET5050-001-460KT</b>	ET5050 machine with tooling		
	<b>ET5050-001-480KT</b>	ET5050 machine with tooling		

\*Visit the Eaton PowerSource Crimp Specs tool at [www.eatonpowersource.com/crimp-specs/](http://www.eatonpowersource.com/crimp-specs/) to find the tooling needed for all of the hoses and fittings you plan to crimp. For desktop users—select your assembly machine(s), hose series and size, & fitting style to get your results. Locate the download icon and select either PDF or Excel to generate your custom chart.

(Machines Continued)	12 v pump kit	Hand pump kit	Conversion tooling package	New placement tooling package	Winner tooling package	Machine package with optimized tooling
ET1187-001	ET1000PK-004	ET1000PK-001		ET4020TP-0002, ET4020TP-0003		
ET1187-002	ET1000PK-004	ET1000PK-001		ET4020TP-0002, ET4020TP-0003		
ET1187-003	ET1000PK-004	ET1000PK-001		ET4020TP-0002, ET4020TP-0003		
ET1187-004	ET1000PK-004	ET1000PK-001		ET4020TP-0002, ET4020TP-0003		
ET1000-001	ET1000PK-004	ET1000PK-001	ET1000TP-1001	ET1000TP-1002		ET1000-020, ET1000-021
FT1380-115				ET4020TP-0002, ET4020TP-0003		FT1380-115-8
FT1380-115CSA				ET4020TP-0002, ET4020TP-0003		
FT1380-230				ET4020TP-0002, ET4020TP-0003		
FT1380-230CSA				ET4020TP-0002, ET4020TP-0003		
T-420-1			T420TP-1001	T420TP-1001	T420TP-1002	T-420-001, T-420-002
T-420-1CSA			T420TP-1001	T420TP-1001	T420TP-1002	T-420-001CSA, T-420-002CSA
FT1390-115				ET4040TP-0007, ET4040TP-0008		FT1390-115-12
FT1390-115CSA				ET4040TP-0007, ET4040TP-0008		
FT1390-230				ET4040TP-0007, ET4040TP-0008		
FT1390-230CSA				ET4040TP-0007, ET4040TP-0008		
ET4001-004			ET4001TP-1001	ET4001TP-1002	ET4001TP-1003	ET4001-015
ET4001-004CSA			ET4001TP-1001	ET4001TP-1002	ET4001TP-1003	ET4001-015CSA
ET5050-001-230KT				ET5040C-0023		ET5050-001-230KT
ET5050-001-380KT				ET5040C-0023		ET5050-001-380KT
ET5050-001-400KT				ET5040C-0023		ET5050-001-400KT
ET5050-001-420KT				ET5040C-0023		ET5050-001-420KT
ET5050-001-440KT				ET5040C-0023		ET5050-001-440KT
ET5050-001-460KT				ET5040C-0023		ET5050-001-460KT
ET5050-001-480KT				ET5040C-0023		ET5050-001-480KT

**Note:** See individual machine page for machine and tooling package contents

## We're changing the crimping game.

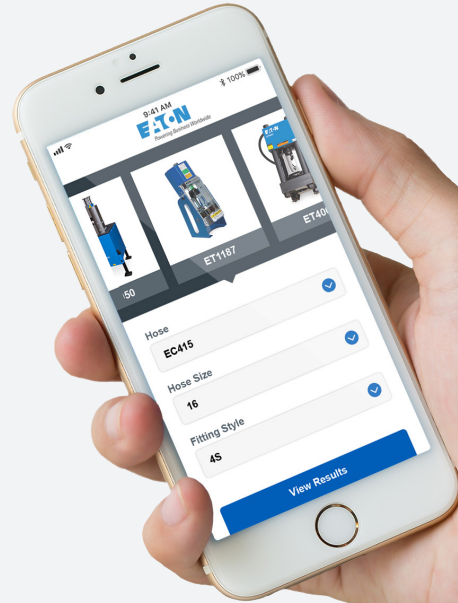
### Mobile crimp tool

We've made it easier to help your customers find the proper crimp spec anytime, anywhere with the new mobile crimp spec tool on PowerSource.

Visit [www.eaton.com/crimp](http://www.eaton.com/crimp) on your mobile device and follow these steps:

1. Find your machine
2. Select your hose series
3. Select your hose size
4. Find your fitting style

Then view your results. Add the tool to your home screen for even quicker access.

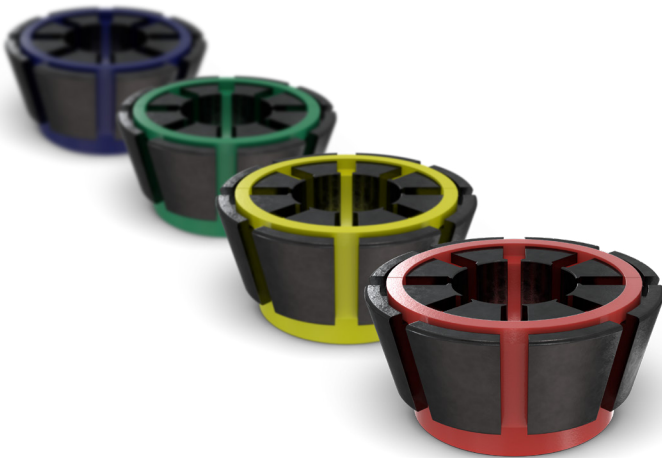


## Making crimping simple.

### Color coded crimping

When ordering positive stop machines, consider Eaton's new optimized tooling. This new tooling features built-in fitting locators and collet cages that are color-coded to indicate dash size, all designed to make crimping a breeze.

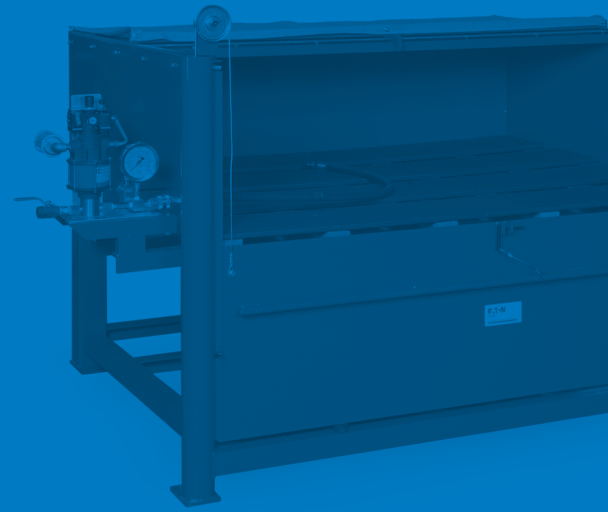
Eaton is committed to providing quality products with great features and supporting them with tools that make doing your job easy. Take advantage of these benefits and convert to Eaton's new optimized tooling today!



Hose Dash Size	Collet Cage Color Code	Z Series Collet	4S Series Collet	6S Series Collet
		Black	Silver	Olive
-04	Red		N/A	N/A
-05	Purple		N/A	N/A
-06	Yellow			N/A
-08	Blue			N/A
-10	Orange			N/A
-12	Green			N/A
-16	Black			N/A
-20	White			
-24	Dark Red			
-32	Dark Green			

# Other assembly equipment

Eaton offers a complete line of assembly equipment solutions designed to prep, assemble, clean, cap, and test your completed hose assembly. Check out some of our featured equipment below.



## Hose saws and blades

We offer innovative saws and saw blades designed to offer the cleanest cuts with low smoke.

For further information, refer to the Assembly Equipment section of Eaton's Aeroquip and Weatherhead Master Catalogs.



## Contamination control

Eaton offers hose cleaning systems to ensure your hose assembly is free of contaminants, and hose capping systems to make sure the assembly remains contaminant free during transit.

For further information, refer to the Assembly Equipment section of Eaton's Aeroquip and Weatherhead Master Catalogs.



## Hose proof test stands

And to test the final assembly, we offer hose proof test stands.

For further information, refer to the Assembly Equipment section of Eaton's Aeroquip and Weatherhead Master Catalogs.









**Eaton**  
1000 Eaton Boulevard  
Cleveland, OH 44122  
USA  
Eaton.com

Eaton  
Hydraulics Group  
14615 Lone Oak Road  
Eden Prairie, MN 55344  
USA  
Eaton.com/hydraulics

© 2018 Eaton  
All Rights Reserved  
Printed in USA  
Publication No. E-HOIN-CC008-E

Eaton is a registered trademark.

All other trademarks are property  
of their respective owners.

Follow us on social media to get the  
latest product and support information.

