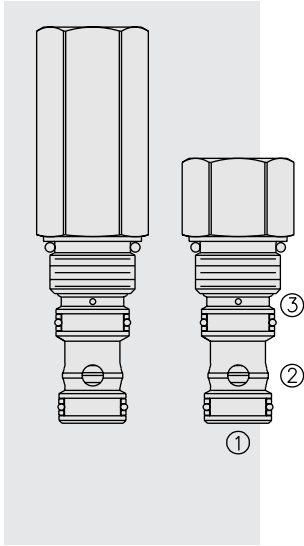


## EP10-S35 Piloted Spool-Type Logic Element



### DESCRIPTION

A spool-type, screw-in, cartridge-style, hydraulic directional element, with multi-function potential when used with other directional, pressure, or flow control devices.

### OPERATION

The EP10-S35 is a spring-biased blocking valve which will shift to allow full flow from 1 to 2 only when pressure at 1 exceeds the cumulative pressure of 3, plus the bias spring pressure value.

EP10-S35 is a pilot-to-close directional valve.

With no pressure at 3, flow will be allowed from 1 to 2 once the bias spring force is overcome with pressure at 1.

### FEATURES

- Multiple function/application potential.
- Low pressure drop.
- Range of bias spring pressure options. Tall cap required for 160, M11, 230, and M15.9 spring options.
- Industry common cavity.

### RATINGS

**Operating Pressure:** 345 bar (5000 psi) cartridge; 207 bar (3000 psi) standard aluminum housing; 345 bar (5000 psi) ductile iron housing.

**Flow Rating:** See Performance Chart

**Internal Leakage:** 164 ml/minute (10 cu. in./minute) max. at 207 bar (3000 psi)

**Temperature:** -54 to 107°C (-65 to 225°F) with standard polyurethane seals.

**Filtration:** See page 9.010.1

**Fluids:** Mineral-based or synthetics with lubricating properties at viscosities of 7.4 to 420 cSt (50 to 2000 sus); See Temperature and Oil Viscosity, page 9.060.1

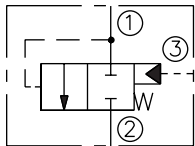
**Installation:** No restrictions; See page 9.020.1

**Cavity:** VC10-S3; See page 9.110.1

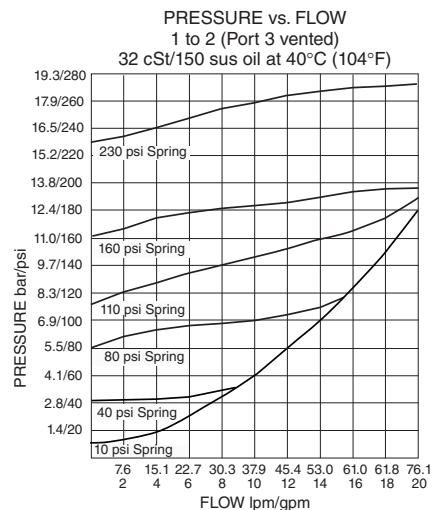
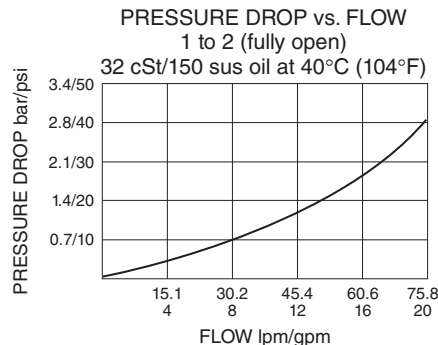
**Cavity Tool:** CT10-S3xx; See page 8.600.1

**Seal Kit:** SK10-S3x-P; See page 8.650.1

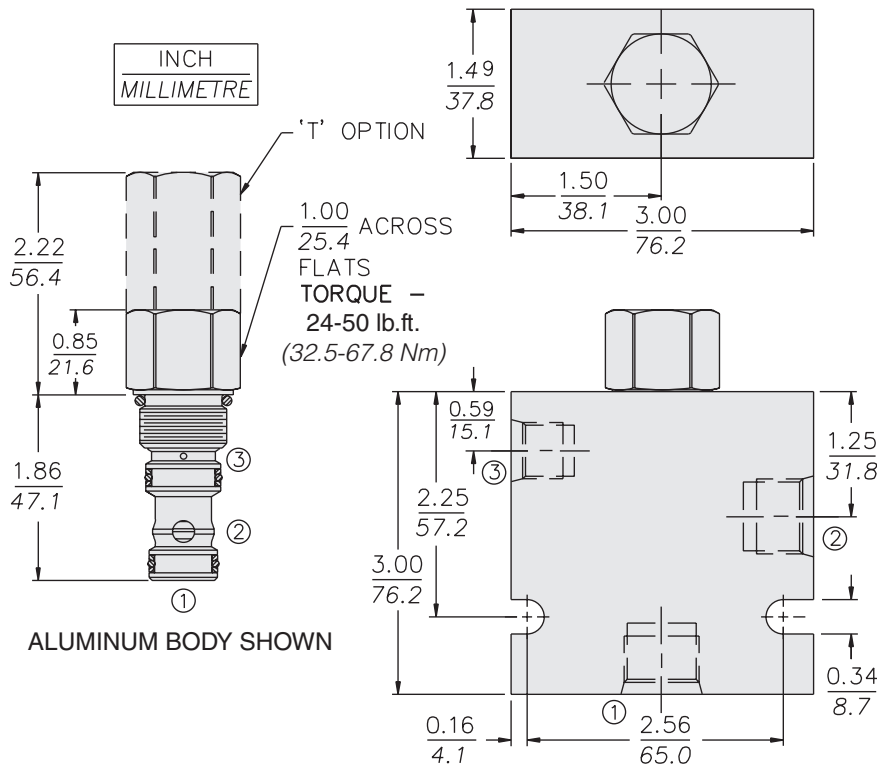
### ISO SYMBOL



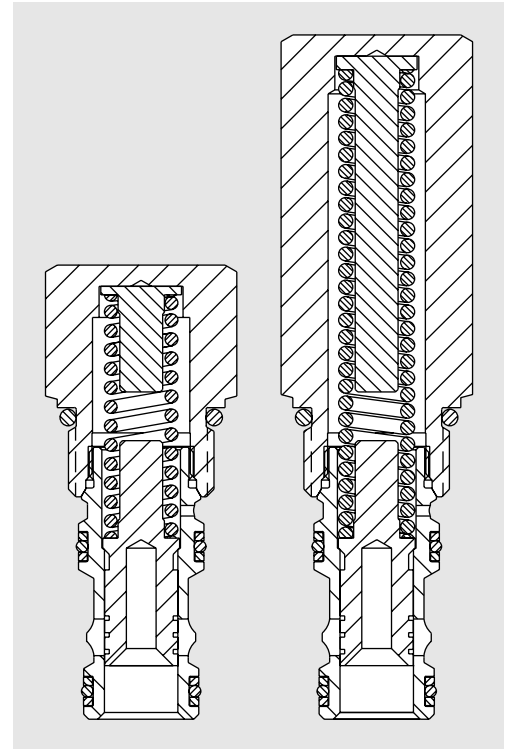
### PERFORMANCE (Cartridge Only)



## DIMENSIONS



ORIFICE DISCS SHOULD NOT BE USED WITH THIS PRODUCT.



## MATERIALS

**Cartridge:** Weight: 0.14 kg. (0.31 lbs.); with tall cap option 0.27 kg. (0.60 lb.)  
Steel with hardened work surfaces.  
Zinc-plated exposed surfaces.  
Buna N O-rings and polyester elastomer back-ups standard.

**Standard Ported Body:** Weight: 0.32 kg. (0.70 lbs.) Anodized high-strength aluminum alloy, rated to 207 bar (3000 psi). Ductile iron (8TD) bodies are available for pressures up to 350 bar (5000 psi); Weight and dimensions may differ. See page 8.010.1.

## TO ORDER

### EP10-S35

**Option**  
None (Blank)  
Tall Cap T

**Porting**  
Cartridge Only 0  
SAE 8\* 8T  
SAE 8\* 8TD  
SAE 10\* 10T  
SAE 12\* 12T

\*SAE 6 pilot port

Ductile iron (8TD) bodies are available for pressures up to 350 bar (5000 psi).

### Bias Spring

10 0.7 bar (10 psi)  
40 2.8 bar (40 psi)  
80 5.52 bar (80 psi)  
110 7.6 bar (110 psi)  
‡160 11.0 bar (160 psi)  
‡M11 11.0 bar (160 psi)  
‡230 15.9 bar (230 psi)  
‡M15.9 15.9 bar (230 psi)

‡ T Option required

### Seals

P Polyurethane

Note: Polyurethane seals required for pressures over 241 bar (3500 psi). Consult factory for additional seal options.