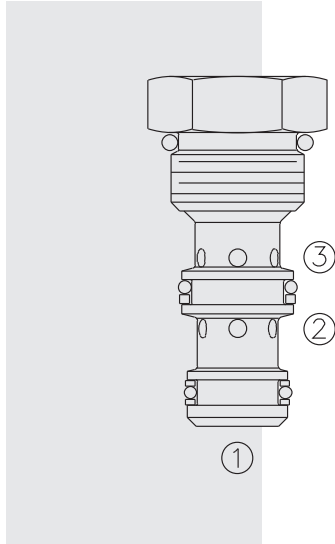
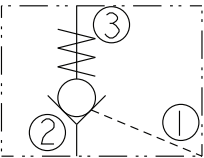


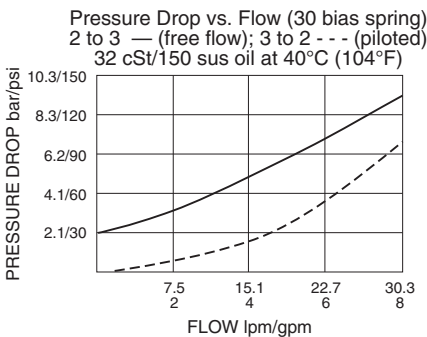
HPC08-30 HyPerformance™ Check, Pilot-to-Open



ISO SYMBOL



PERFORMANCE (Cartridge Only)



DESCRIPTION

A screw-in, cartridge-style, pilot-operated, hydraulic check valve for use as a blocking or load-holding device for high pressure applications.

OPERATION

The **HPC08-30** allows flow from 2 to 3, while normally blocking flow from 3 to 2. Flow will be allowed from 3 to 2 when pressure at 1 exceeds one-third the pressure at 3.

The cartridge has a 3:1 pilot ratio, meaning that at least one-third of the load pressure held at 3 is required at 1 to open the valve.

The check is spring-biased to assure holding in static or no-load conditions. A sealed pilot piston option is available.

FEATURES

- Hardened seat for long life and low leakage.
- Optional sealed piston.
- Optional spring ranges.
- Compact size.
- All HyPerformance products are tested to the rigorous standards of the NFPA specification T2.6.1.
- All HyPerformance valves are tested at a verification level of 90% and an assurance of 99%.

RATINGS

Operating Pressure: 350 bar (5075 psi); 10% cycle life: 420 bar (6090 psi)
 Note: All HyPerformance products are tested for 900K cycles at 350 bar and 100K at 420 bar.

Fatigue Rating: 2 million cycles at 420 bar

Proof Pressure: 690 bar (10000 psi)

Burst Pressure: 1380 bar (20000 psi)

Flow Rating: 30.3 lpm (8 gpm)

Maximum Internal Leakage at 350 bar (5075 psi): 0.10 ml/minute (2 drops/minute)

Temperature: -40 to 100°C (-40 to 212°F) with Buna seals;

-26 to 204°C (-15 to 400°F) with fluorocarbon seals;

-54 to 107°C (-65 to 225°F) with urethane seals

Filtration: See page 9.010.1

Fluids: Mineral-based or synthetics with lubricating properties at viscosities of 7.4 to 420 cSt (50 to 2000 sus); See Temperature and Oil Viscosity, page 9.060.1

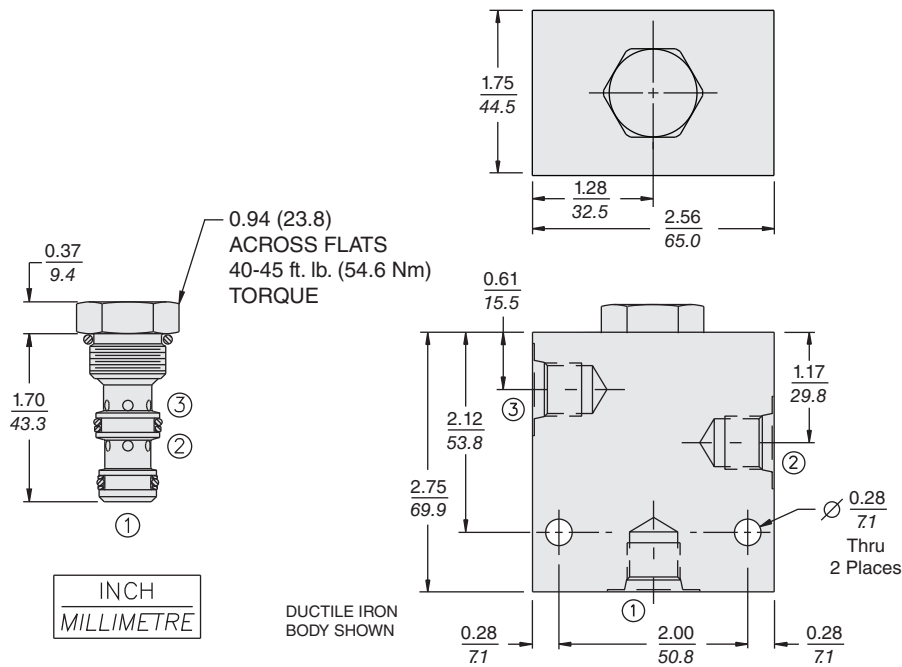
Installation: No restrictions; See page 9.020.1

Cavity: HVC08-3; See page 9.108.1

Cavity Tool: HCT08-3XX; See page 8.600.1

Seal Kit: SK08-3X-TM for Buna N seals; SK08-3V-TM for fluorocarbon seals; SK08-3U-00 for urethane seals; see page 8.650.1

DIMENSIONS

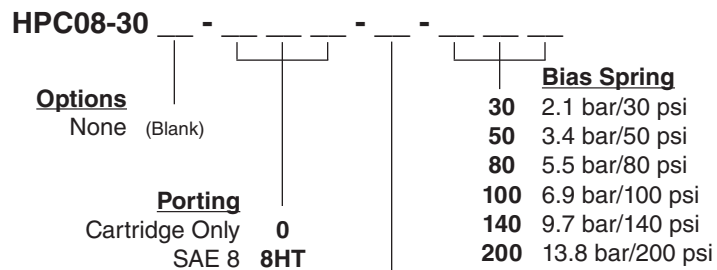


MATERIALS

Cartridge: Weight: 0.07 kg. (0.16 lbs.)
Steel with hardened work surfaces.
Zinc-plated exposed surfaces.
Urethane seals without back-ups
standard.

Ported Body: Weight: 0.27 kg. (0.60 lbs.)
H-series ductile iron standard. Rated to
345 bar (5000 psi). See page 8.008.1

TO ORDER



Seals

- N** Buna N (Std.)
- NS** Buna N with Sealed Piston
- V** Fluorocarbon
- VS** Fluorocarbon with Sealed Piston
- U** Urethane
- US** Urethane with Sealed Piston

Note: Urethane seals recommended for operating pressures above 3500 psi (241 bar).

Note: NS, VS and US seal options require 9.7 bar (140 psi) spring minimum.