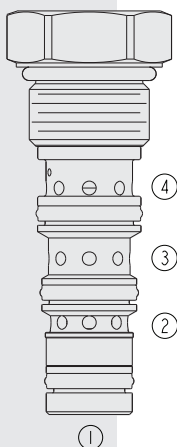
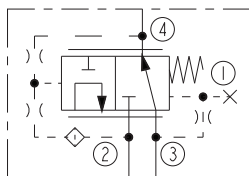


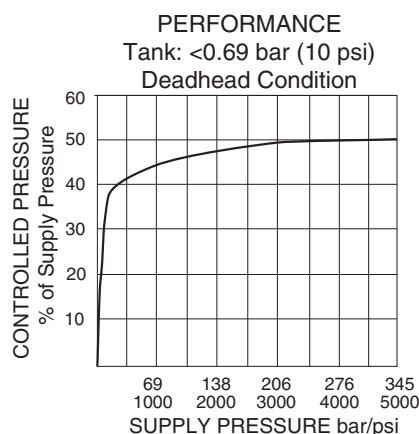
HTD10-40 Torque Divider



ISO SYMBOL



PERFORMANCE (Cartridge Only)



DESCRIPTION

A high pressure, spool-type, screw-in, cartridge-style, hydraulic pressure reducing/relieving valve that maintains the control port pressure at the midpoint of the supply port pressure.

OPERATION

The spool of the **HTD10-40** is biased to block flow from port 2 to 3 and allow flow from port 3 to 4. Pressure applied to port 2 shifts the spool to block flow to port 4 and allow flow from 2 to 3 until the pressure at 3 is at the midpoint of the pressure at 2 and port 4. The valve relieves flow from 3 to 4 if the pressure at 3 increases above the midpoint. Port 1 is blocked (unused).

FEATURES

- Divides torque between two series motors.
- Accommodates differential flow (size optimized).
- Cost-effective.
- Hardened spool and cage for long life.
- All HyPerformance™ products are tested to the rigorous standards of the NFPA specification T2.6.1.
- All HyPerformance™ valves are tested at a verification level of 90% and an assurance of 99%.

RATINGS

Operating Pressure: 350 bar (5075 psi) all ports; 10% life cycle 420 bar (6090 psi)

Note: All HyPerformance products are tested for 900K cycles at 350 bar and 100K cycles at 420 bar.

Proof Pressure: 690 bar (10000 psi)

Burst Pressure: 1380 bar (20000 psi)

Flow Rating: 56.8 lpm (15 gpm)

Control Pressure Setting: Midpoint of supply and tank pressure. See performance chart.

Maximum Internal Leakage: 1.95 lpm (0.52 gpm) at 350 bar (5075 psi)

Temperature: -40 to 100°C (-40 to 212°F) with standard Buna seals;

-26 to 204°C (-15 to 400°F) with fluorocarbon seals;

-54°C to 107°C (-65°F to 225°F) with urethane seals.

Filtration: See page 9.010.1

Fluids: Mineral-based or synthetics with lubricating properties at viscosities of 7.4 to 420 cSt (50 to 2000 sus); See Temperature and Oil Viscosity, page 9.060.1

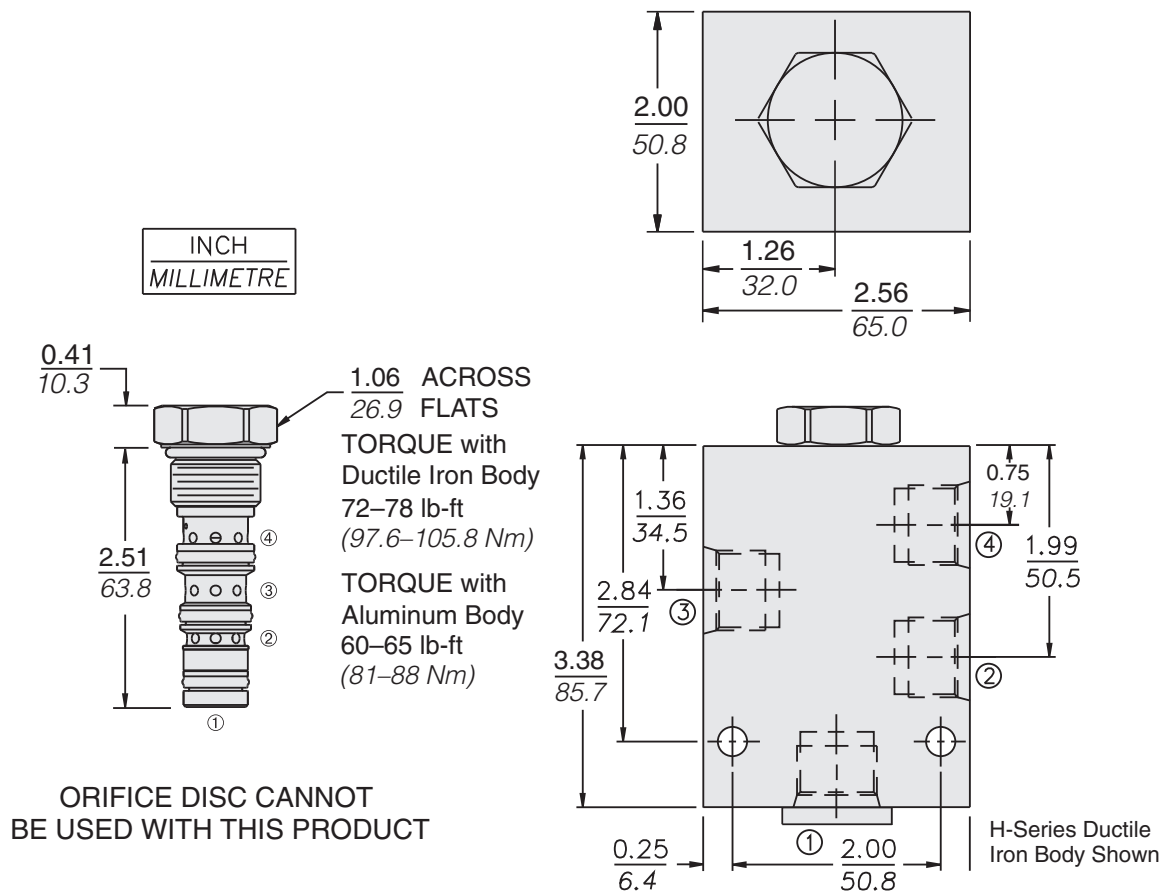
Installation: No restrictions; See page 9.020.1

Cavity: HVC10-4; See page 9.110.1

Cavity Tool: HCT10-4XX; See page 8.600.1

Seal Kit: SK10-4U-000 (urethane); SK10-4N-BMM (Buna); SK10-4V-BMM (fluorocarbon); See page 8.650.1

DIMENSIONS



MATERIALS

Cartridge: Weight: 0.15 kg (0.32 lb)
 Steel with hardened work surfaces.
 Zinc-plated exposed surfaces.
 Urethane seals standard.

Standard Ported Body: Weight: 1.75 kg (3.87 lb)
 H-series ductile iron body, rated to 350 bar (5075 psi).
 See page 8.010.1.

TO ORDER

HTD10-40 -

Porting
 Cartridge Only **0**
 SAE 8 **8HT**

Seals
 Buna **N**
 Fluorocarbon **V**
 PPDI Urethane **U**

Note: PPDI urethane seals are recommended for operating pressures above 241 bar (3500 psi).