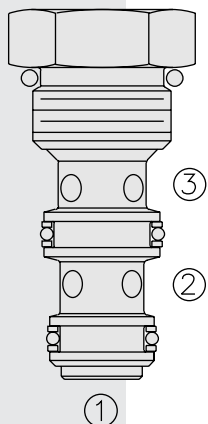


## LS08-30 Load Shuttle, Ball-Type



### DESCRIPTION

A load-shuttling, screw-in, cartridge-style hydraulic check valve, for use in blocking circuits where a priority of flow/direction is given to a higher pressure circuit over a lower one.

### OPERATION

The **LS08-30** will allow flow from the higher pressure of ① or ③ port to the ② port.

The valve is commonly used to direct oil from the pressure side of a bidirectional hydraulic motor to a pressure-released hydraulic brake.

### FEATURES

- Rapid response to load direction changes.
- Compact size.

### RATINGS

**Operating Pressure:** 240 bar (3500 psi)

**Proof Pressure:** 390 bar (5700 psi)

**Flow:** See Performance Chart

**Internal Leakage:** 0.25 cc/minute (5 drops/minute) max. at 207 bar(3000 psi)

**Temperature:** -40 to 120°C with standard Buna seals

**Filtration:** See page 9.010.1

**Fluids:** Mineral-based or synthetics with lubricating properties at viscosities of 7.4 to 420 cSt (50 to 2000 sus); See Temperature and Oil Viscosity, page 9.060.1

**Installation:** No restrictions; See page 9.020.1

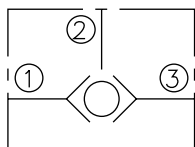
**Cavity:** VC08-3; See page 9.108.1

**Cavity Tool:** CT08-3XX; See page 8.600.1

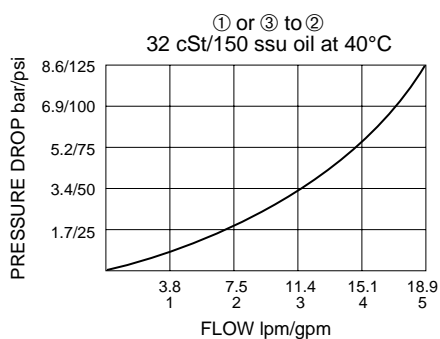
**Seal Kit:** SK08-3X-MM; See page 8.650.1

### SYMBOLS

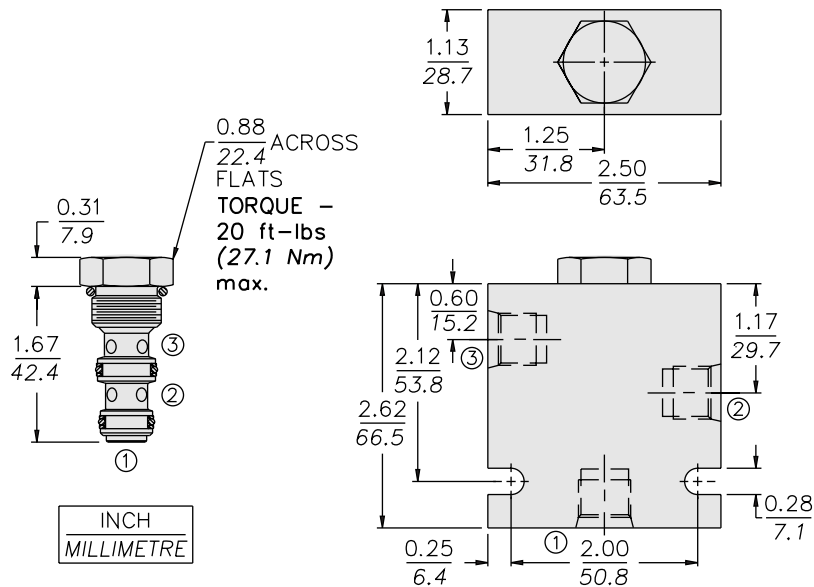
#### USAS/ISO:



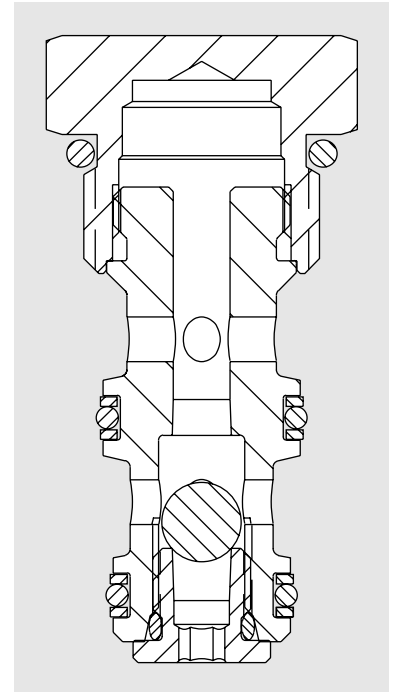
### PERFORMANCE (Cartridge Only)



## DIMENSIONS



ORIFICE DISC MAY NOT BE  
USED WITH THIS PRODUCT.



## MATERIALS

**Cartridge:** Weight: 0.08 kg. (0.17 lbs.)  
Steel with Zinc-plated exposed  
surfaces; Buna N O-rings and  
back-ups standard.

**Standard Ported Body:** Weight:  
0.27 kg. (0.60 lbs.) Anodized high-  
strength 6061 T6 aluminum alloy,  
rated to 207 bar (3000 psi). Ductile  
iron bodies available; dimensions  
may differ. See page 8.008.1

## TO ORDER

LS08-30-

### Porting

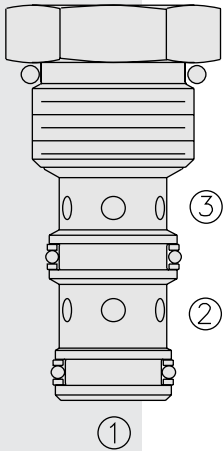
Cartridge Only	<b>0</b>
SAE 4	<b>4T</b>
SAE 6	<b>6T</b>
1/4 in. BSP*	<b>2B</b>
3/8 in. BSP*	<b>3B</b>

\*BSP Body  
U.K. Mfr. Only

### Seals

<b>N</b>	Buna N (Std.)
<b>V</b>	Fluorocarbon

## LS10-30 Load Shuttle, Ball-Type



### DESCRIPTION

A load-shuttling, screw-in, cartridge-style hydraulic check valve, for use in blocking circuits where a priority of flow/direction is given to a higher pressure circuit over a lower one.

### OPERATION

The **LS10-30** will allow flow from the higher pressure ① or ③ port to the ② port. The valve is commonly used to direct oil from the pressure side of a bidirectional hydraulic motor to a pressure-released hydraulic brake.

### FEATURES

- Rapid response to load direction changes.
- Industry common cavity.

### RATINGS

**Operating Pressure:** 240 bar (3500 psi)

**Proof Pressure:** 390 bar (5700 psi)

**Flow:** See Performance Chart

**Internal Leakage:** 0.25 cc/minute (5 drops/minute) max. at 207 bar(3000 psi)

**Temperature:** -40 to 120°C with standard Buna seals

**Filtration:** See page 9.010.1

**Fluids:** Mineral-based or synthetics with lubricating properties at viscosities of 7.4 to 420 cSt (50 to 2000 sus); See Temperature and Oil Viscosity, page 9.060.1

**Installation:** No restrictions; See page 9.020.1

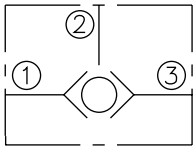
**Cavity:** VC10-3; See page 9.110.1

**Cavity Tool:** CT10-3XX; See page 8.600.1

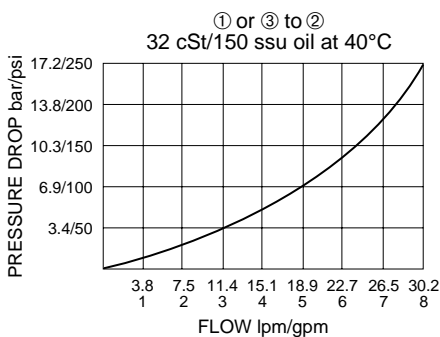
**Seal Kit:** SK10-3X-MM; See page 8.650.1

### SYMBOLS

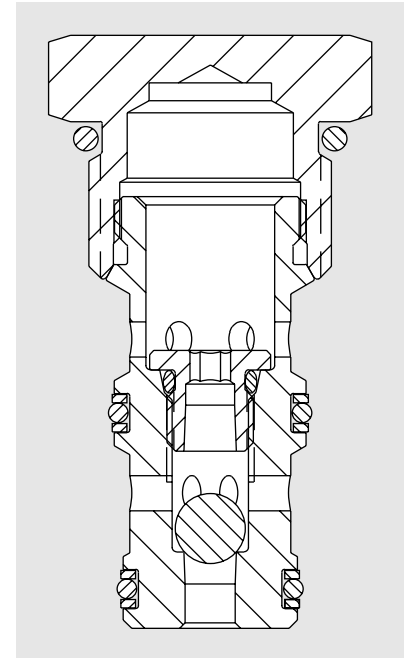
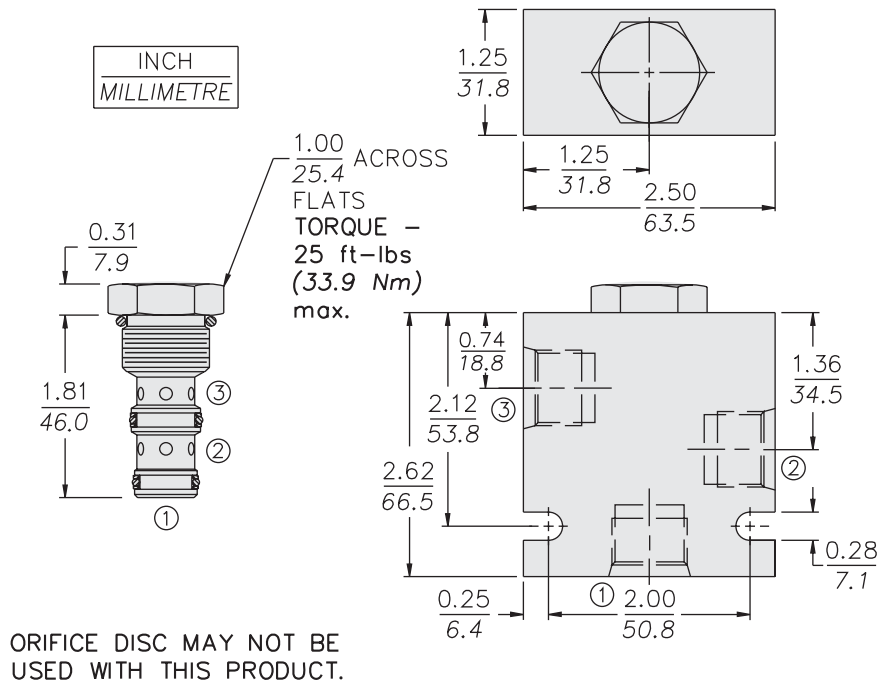
#### USASI/ISO:



### PERFORMANCE (Cartridge Only)



## DIMENSIONS



## MATERIALS

**Cartridge:** Weight: 0.08 kg. (0.18 lbs.)  
Steel with Zinc-plated exposed  
surfaces; Buna N O-rings and  
polyester elastomer back-ups  
standard.

**Standard Ported Body:** Weight:  
0.36 kg. (0.80 lbs.) Anodized high-  
strength 6061 T6 aluminum alloy,  
rated to 207 bar (3000 psi). Ductile  
iron bodies available; dimensions  
may differ. See page 8.010.1

## TO ORDER

LS10-30-

**Porting**

Cartridge Only	0
SAE 6	6T
SAE 8	8T
1/4 in. BSP*	2B
3/8 in. BSP*	3B

\*BSP Body;  
U.K. Mfr. Only

**Seals**

N	Buna N (Std.)
V	Fluorocarbon