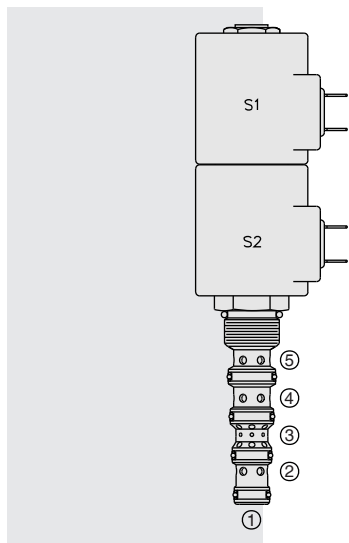


ELECTRO-PROPORTIONAL VALVES—DIRECTIONAL CONTROL

SP10-58D Spool, 5-Way, 3-Position . . .**DESCRIPTION**

A solenoid-operated, 5-way, 3-position, proportional, screw-in hydraulic cartridge valve with integral brake release port.

OPERATION

When de-energized, the **SP10-58D** allows flow between 4, 3, 2, and 1. When coil #1 is energized, flow is allowed from 5 to 2, and from 4 to 3. When coil #2 is energized, flow is allowed from 5 to 4, and from 2 to 3. Load sense is connected to port 5 when the spool is in shifted positions.

Note: If low voltage is expected on the machine, 12 or 24 volt systems will require the use of 10 volt or 20 volt coils respectively. See "SP Valves and Coil Operating Parameters," page 2.002.1.

FEATURES

- Continuous-duty rated solenoid.
- Hardened precision spool and cage for long life.
- Optional coil voltages and terminations
- Cartridges are voltage interchangeable.
- Optional manual override.
- Optional waterproof E-Coils rated up to IP69K.

RATINGS

Operating Pressure: 250 bar (3625 psi) with standard Buna N seals

Flow: 22.8 lpm (6 gpm) max. See performance chart

Internal Leakage: 246 cc/minute (15 cu. in./minute) max. at 207 bar (3000 psi)

Temperature: -40 to 120°C with standard Buna seals

Coil Duty Rating: Continuous from 85% to 115% of nominal voltage

Filtration: See page 9.010.1

Fluids: Mineral-based or synthetics with lubricating properties at viscosities of 7.4 to 420 cSt (50 to 2000 sus); See Temperature and Oil Viscosity, page 9.060.1

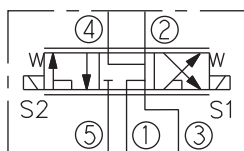
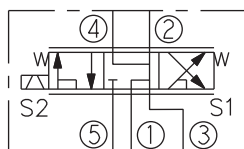
Installation: No restrictions; See page 9.020.1

Cavity: VC10-5; See page 9.110.1; **Cavity Tool:** CT10-5XX; See page 8.600.1

Seal Kit: SK10-5X-MMMM; See page 8.650.1

Coil Nut: Part No. 7004400

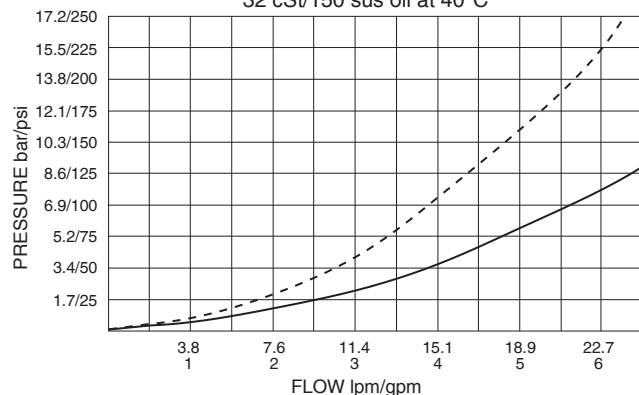
Coil Spacer: Std. D-Coil Spacer Part No. 7009280; E-Coil Spacer Part No. 4539700; If cartridge is ordered "Less Coil," D-Coil spacer will be provided unless an E is specified in the Coil Termination To Order section.

SYMBOLS**USASI:****ISO:****PERFORMANCE** (Cartridge Only)

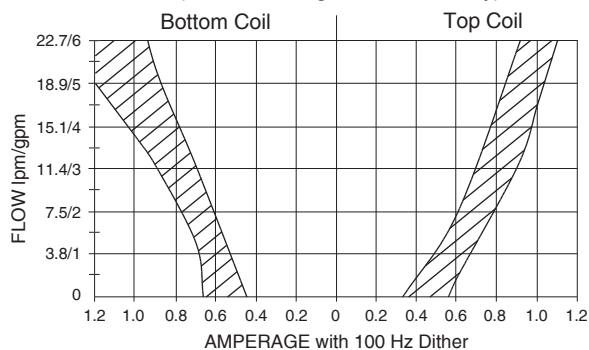
5 to 2 or 5 to 4 at 100% current, S1 or S2 energized: - - - - -

4 to 3 or 2 to 3 at 100% current, S1 or S2 energized: —————

32 cSt/150 sus oil at 40°C



Performance with 12 VDC Coils
and 10.3 bar/150 psi inline compensator
(for other voltages consult factory)

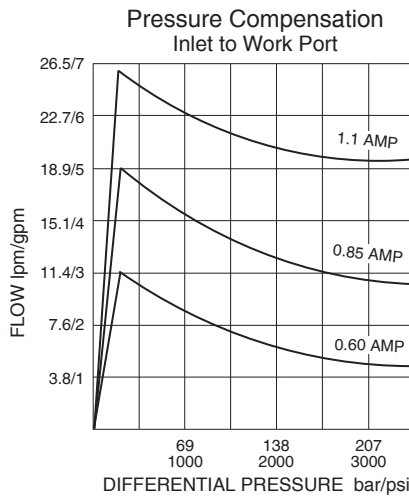


Performance information continued on following page.

for Brake Release Applications

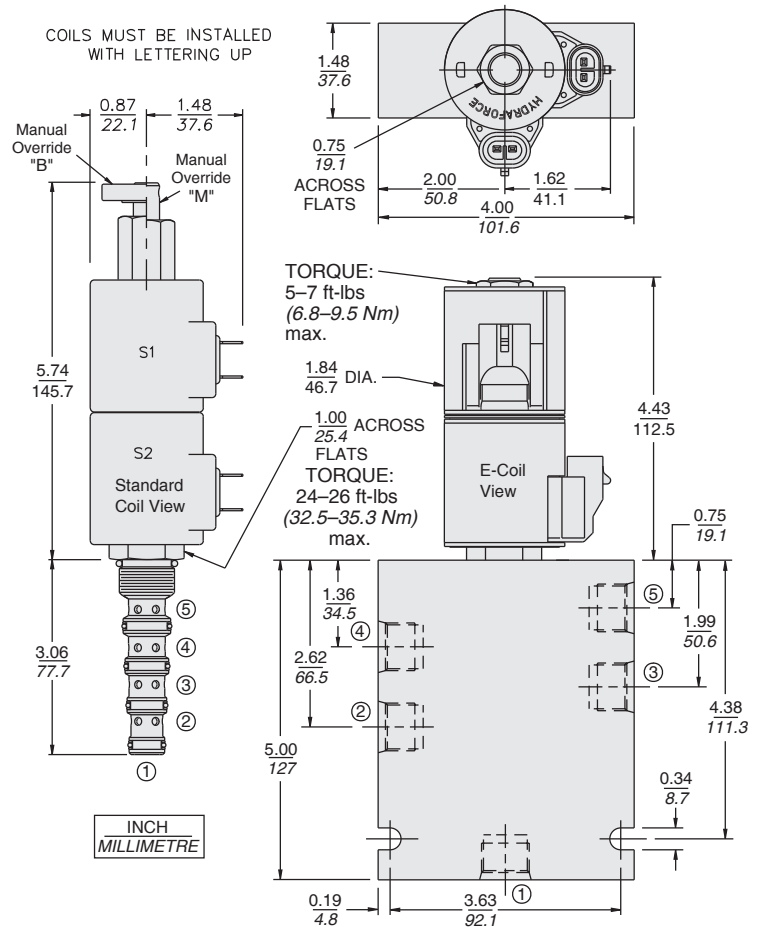
SP10-58D

PERFORMANCE (Continued)



Recommended Electronic Controllers:
See page 2.001.1 or our Electronics catalog.

DIMENSIONS



MATERIALS

Cartridge: Weight: 0.36 kg. (0.80 lbs.) Steel with hardened work surfaces. Zinc-plated exposed surfaces; Buna N O-rings and back-ups standard.

Standard Ported Body:
Weight: 0.41 kg. (0.85 lbs.); Anodized high-strength 6061 T6 aluminum alloy, rated to 207 bar (3000 psi); Ductile iron bodies available; dimensions may differ. See page 8.010.1.

Standard Coil: Weight each: 0.27 kg. (0.60 lbs.); Unitized thermoplastic encapsulated, Class H high temperature magnetwire. See page 3.200.1

E-Coil: Weight each: 0.41 kg. (0.9 lbs.); Perfect wound, fully encapsulated with rugged external metal shell; Rated up to IP69K with integral connectors. See page 3.400.1

TO ORDER

SP10-58D - - -			
1,000 Hour Salt Spray Coating	G		
Option			
None (Blank)			
Manual Override	M		
Manual Override	B		
For Manual Override options see page 1.001.1			
Porting			
Cartridge Only	0		
SAE 6	6T		
SAE 8	8T		
Seals			
Buna N (Std.)	N		
Fluorocarbon	V		
Voltage Std. Coil			
00	Less Coil**		
10	10 VDC†		
12	12 VDC		
20	20 VDC		
24	24 VDC		
**Includes D-Coil Nut and Spacer.			
† DS, DW or DL terminations only.			
E-Coil			
10	10 VDC		
12	12 VDC		
20	20 VDC		
24	24 VDC		
Coil Termination		E-Coil	D-Coil
Less Coil w/Spacer		E	—
Deutsch DT04-2P		ER (IP69K)	DR (IP65)
Metri-Pack® 150		EY (IP69K)	DY (IP65)
Dual Lead Wires		EL (IP69K)	DL (IP65)
Amp Jr. Timer		EJ (IP67)	—
DIN 43650		EG (IP65)	DG (IP65)
Dual Spades		—	DS (IP65)

For Coils with Zener Diode, add "Z" to option code.
For example: "ER/Z". Not available on all models.
See coil option info. on pages 3.200.1 & 3.400.1