



## Overview

PD10-40-0-N-M5.0

www: [www.salushydraulics.pl](http://www.salushydraulics.pl)  
 e-mail: [pl@salushydraulics.pl](mailto:pl@salushydraulics.pl)  
 shop/sklep: [www.salushydraulics.pl/sklep/](http://www.salushydraulics.pl/sklep/)

### Description

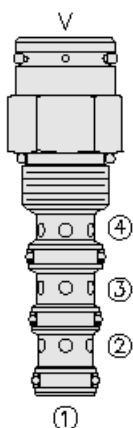
The pd10-40xx is a screw-in, cartridge style, pilot-operated, spool type, hydraulic directional valve

### Operation

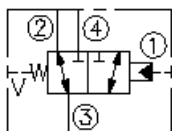
In neutral position the valve allows flow from port 3 to 2 bidirectionally, while port 4 is blocked. The spring chamber is vented to atmosphere "v" which is internally o-ring sealed from the cartridge flow paths. On remote pilot signal at port 1, the valve's spool shifts to open port 3 to 4 while port 2 is blocked. Because of the vented spring chamber, the cartridge may be fully pressurized at any port without affecting required pilot pressure

### Features

- Hardened spool and cage for long life.
- Industry common cavity.



## Symbol



## Ratings

### Pressure Ratings

Pressure rating 241 bar (3500 psi)

### Flow Ratings

Flow rating - **Note:** See performance graph

### Temperature Ratings

Operating fluid temperature	-40 to 100 °C (-40 to 212 °F)	- <b>Note:</b> With buna N seals
	-26 to 204 °C (-15 to 400 °F)	- <b>Note:</b> With fluorocarbon seals
	-54 to 107 °C (-65 to 225 °F)	- <b>Note:</b> With polyurethane and urethane seals
Storage temperature	-40 to 70 °C (-40 to 160 °F)	
Ambient temperature	-40 to 90 °C (-40 to 194 °F)	

## Operating Parameters

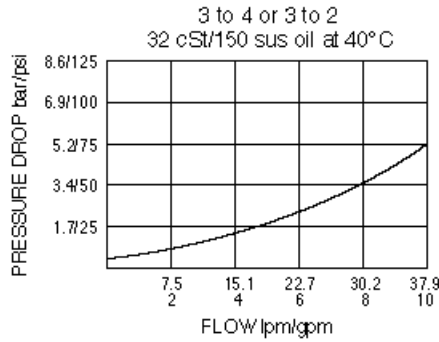
Fluids	Mineral based or synthetic hydraulic fluid with lubricating properties
Fluid viscosity range	7.4 to 420 cSt
Maximum operating contamination level	18/16/13 per ISO 4406

## Properties

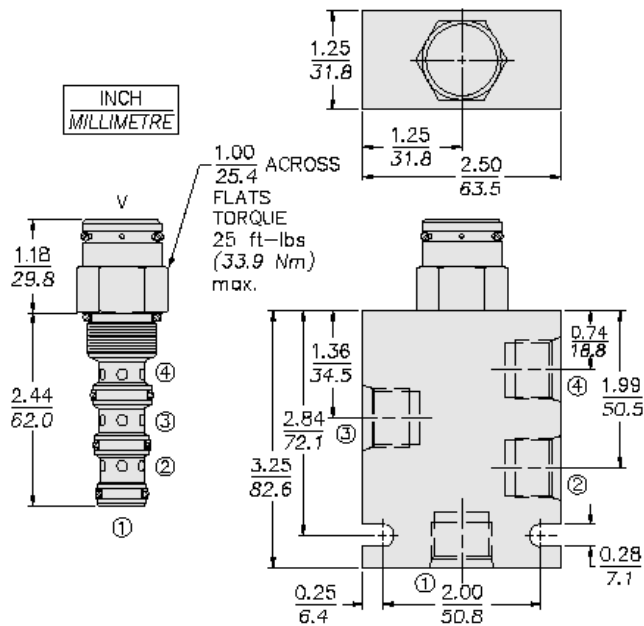
Unit weight	0.20 kg (0.43 lb)	- <b>Note:</b> Standard
	0.30 kg (0.67 lb)	- <b>Note:</b> Tall cap
Internal wetted surface area	189 cm <sup>2</sup> (29.3 in <sup>2</sup> )	- <b>Note:</b> (standard)
	225 cm <sup>2</sup> (34.9 in <sup>2</sup> )	- <b>Note:</b> (tall cap)



## Performance



## Dimensions



## Materials

### Materials

**Cartridge:** Weight: 0.16 kg (0.35 lb); Steel with hardened work surfaces. Zinc-plated exposed surfaces; Buna N O-rings and polyester elastomer back-ups standard.

**Standard Ported Body :** Weight: 0.34 kg (0.75 lb); Anodized high-strength 6061 T6 aluminum alloy, rated to 207 bar (3000 psi). Ductile iron bodies available; dimensions may differ.

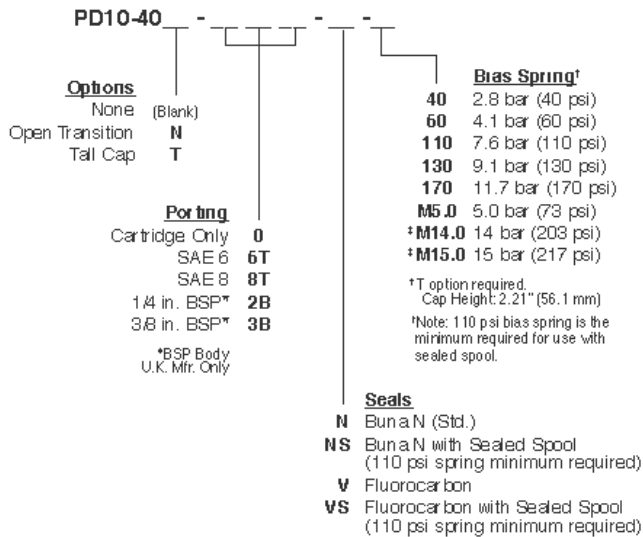
## Installation Specifications

Cavity	VC10-4
Cartridge installation torque	32.6 to 35.4 N-m (24 to 26 ft-lb)
Orientation restriction	None

## Accessories

Seal kit	SK10-4N-MMM ; SK10-4V-MMM ; SK10-4P-MMM ; SK10-4U-000	- Note: Buna N - Note: Polyurethane
Housings		

## Order Code



POSITION	CODE	DESCRIPTION
		PD10-40BC-H-J-R
B		Spool Option
B	BLANK	Standard
B	N	Normally Open in Transition
C		Tall Cap
C	BLANK	Standard Cap
C	T	Tall Cap
H		Line Body
H	0	No Body
H	6T	Aluminum SAE 6
H	8T	Aluminum SAE 8
H	6TD	Ductile Iron SAE 6
J		Seal
J	N	Buna-N
J	NS	Buna-N with a Sealed Spool
J	V	Fluorocarbon
J	VS	Fluorocarbon with a Sealed Spool
J	P	Polyurethane
J	PS	Polyurethane with a Sealed Spool
J	U	PPDI Urethane
J	US	PPDI Urethane with a Sealed Spool
R		Spring
R	40	40 psi Bias Spring
R	60	60 psi Bias Spring
R	M5.0	5 bar Bias Spring
R	110	110 psi Bias Spring
R	130	130 psi Bias Spring
R	170	170 psi Bias Spring
R	200	200 psi Bias Spring
R	M14.0	14 bar Bias Spring
R	M15.0	15 bar Bias Spring