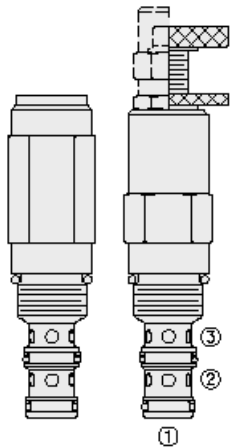




Overview

PR10-36A-0-N-15

www: www.salushydraulics.pl
 e-mail: pl@salushydraulics.pl
 shop/sklep: www.salushydraulics.pl/sklep/



Description

The pr10-36xx is a spool type, pilot operated, hydraulic pressure reducing/ relieving valve with internal pilot and internal spring chamber drain, designed to act as a pressure regulating device for secondary circuits. Port 2 may be protected by 60 mesh, 250 micron rated screen with option s

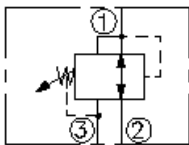
Operation

In its steady state, the pr10-36xx allows flow to pass bidirectionally from port 2 to port 1, with the spring chamber constantly drained at port 3. Upon attainment of a predetermined pressure at port 1, the spool shifts to restrict inlet flow from port 2, thereby regulating pressure at port 1. In this mode the valve will also relieve port 1 to port 3

Features

- Adjustments cannot be backed out of the valve.
- Adjustments prohibit springs from going solid.
- Optional spring ranges to 207 bar (3000 psi).
- Hardened spool and cage for long life.
- Industry-common size.

Symbol



Ratings

Pressure Ratings

Pressure rating	241.3 bar (3500 psi)	- Note: Port 1
	241.3 bar (3500 psi)	- Note: Port 2
	68.9 bar (1000 psi)	- Note: Port 3
Proof pressure	517.1 bar (7500 psi)	
Burst pressure	1034 bar (15000 psi)	

Flow Ratings

Flow rating	56.8 lpm (15 gpm)	
Maximum pilot flow	0.170 lpm (0.045 gpm) of 241 bar (3500 psi)	- Note: With maximum adjustment setting and with inlet pressure

Temperature Ratings

Operating fluid temperature	-40 to 100 °C (-40 to 212 °F)	- Note: With buna N seals
	-26 to 204 °C (-15 to 400 °F)	- Note: With fluorocarbon seals
	-54 to 107 °C (-54 to 225 °F)	- Note: With polyurethane seals
Storage temperature	-40 to 70 °C (-40 to 160 °F)	
Ambient temperature	-40 to 70 °C (-40 to 160 °F)	

Operating Parameters

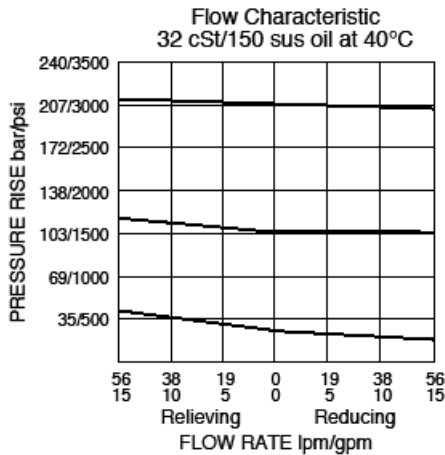
Fluids	Mineral based or synthetic with lubricating properties
Fluid viscosity range	7.4 to 420 cSt
Maximum operating contamination level	18/16/13 per ISO 4406 (tank pressure is additive to regulated pressure)

Properties

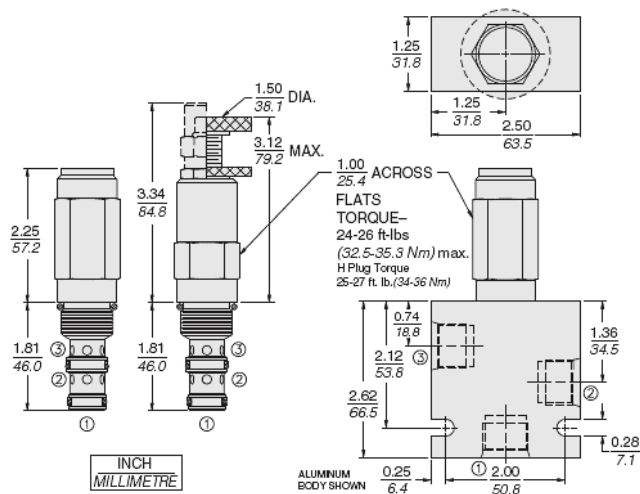
Unit weight	0.26 kg (0.57 lb)	- Note: A
	0.28 kg (0.62 lb)	- Note: B
	0.30 kg (0.67 lb)	- Note: C I
	0.25 kg (0.55 lb)	- Note: F h
	0.25 kg (0.55 lb)	- Note: F h
Internal wetted surface area	165 cm ² (25.5 in ²)	- Note: A b c I
	179 cm ² (25.7 in ²)	- Note: F h



Performance



Dimensions



Materials

Materials

Cartridge: Weight: 0.27 kg (0.60 lb); Steel with hardened work surfaces. Zinc-plated exposed surfaces; Buna N O-rings and polyester elastomer back-ups standard. Anodized aluminum knobs and caps.

Standard Ported Body: Weight: 0.36 kg (0.80 lb); Anodized high-strength 6061 T6 aluminum alloy, rated to 207 bar (3000 psi); Ductile iron bodies available; dimensions may differ.

Adjustment Option Details: See [adjustment options](#)

Installation Specifications

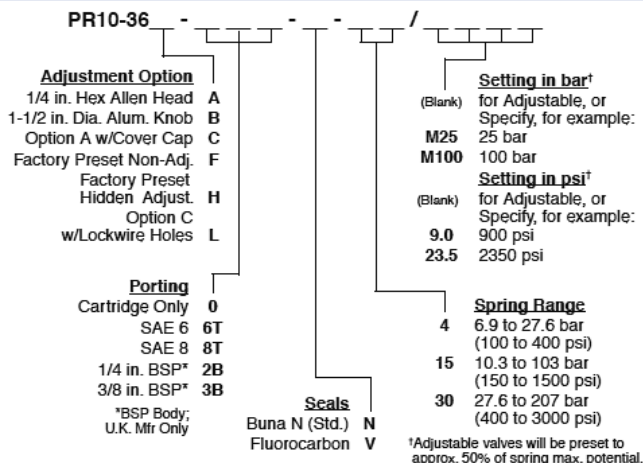
Cavity	VC10-3
Cartridge installation torque	33.9 to 36.7 N-m (25 to 27 ft-lb) 67.8 N-m (50 ft-lb)
H style plug torque	33.9 N-m (25 ft-lb)
Orientation restriction	None

Accessories

Seal kit	SK10-3X-BM	- Note: X=seal option
Housings		



Order Code



POSITION	CODE	DESCRIPTION
		PR10-36FG-H-J-R/S
F		Adjustment Option
F	A	1/4" Hex Allen Head
F	B	1-1/2" Diameter Aluminum Knob with Aluminum Lock Knob
F	C	1/4" Hex Allen Head with Cover Cap
F	F	Factory Preset Non-Adjustable
F	H	Factory Preset Hidden Adjustment
F	L	1/4" Hex Allen Head with Cover Cap and Lockwire Holes
G		Screen
G	BLANK	NONE
G	S	60 Mesh Screen
H		Line Body
H	0	No Body
H	6T	Aluminum SAE 6
H	8T	Aluminum SAE 8
H	6TD	Ductile Iron SAE 6
H	8TD	Ductile Iron SAE 8
H	3B	Aluminum BSPP 3/8" (3)
H	3BD	Ductile Iron BSPP 3/8" (3)
J		Seal
J	N	Buna-N
J	V	Fluorocarbon
J	P	Polyurethane
J	U	PPDI Urethane
R		Spring
R	04	6.9 to 27.6 bar (100 to 400 psi) Spring Range
R	15	10.3 to 103.4 bar (150 to 1500 psi) Spring Range
R	30	27.6 to 206.8 bar (400 to 3000 psi) Spring Range
S		Setting
S	MXXX	Spring Setting in XXX bar
S	XX	Spring Setting in XX psi (x 100)