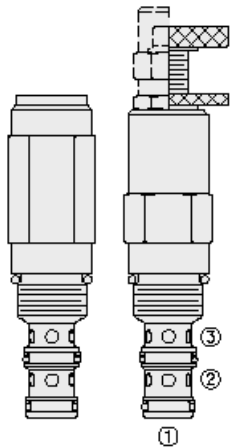




Overview

PR10-36A-0-N-30

www: www.salushydraulics.pl
 e-mail: pl@salushydraulics.pl
 shop/sklep: www.salushydraulics.pl/sklep/



Description

The pr10-36xx is a spool type, pilot operated, hydraulic pressure reducing/ relieving valve with internal pilot and internal spring chamber drain, designed to act as a pressure regulating device for secondary circuits. Port 2 may be protected by 60 mesh, 250 micron rated screen with option s

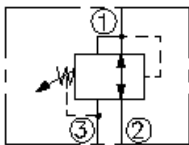
Operation

In its steady state, the pr10-36xx allows flow to pass bidirectionally from port 2 to port 1, with the spring chamber constantly drained at port 3. Upon attainment of a predetermined pressure at port 1, the spool shifts to restrict inlet flow from port 2, thereby regulating pressure at port 1. In this mode the valve will also relieve port 1 to port 3

Features

- Adjustments cannot be backed out of the valve.
- Adjustments prohibit springs from going solid.
- Optional spring ranges to 207 bar (3000 psi).
- Hardened spool and cage for long life.
- Industry-common size.

Symbol



Ratings

Pressure Ratings

Pressure rating	241.3 bar (3500 psi)	- Note: Port 1
	241.3 bar (3500 psi)	- Note: Port 2
	68.9 bar (1000 psi)	- Note: Port 3
Proof pressure	517.1 bar (7500 psi)	
Burst pressure	1034 bar (15000 psi)	

Flow Ratings

Flow rating	56.8 lpm (15 gpm)	
Maximum pilot flow	0.170 lpm (0.045 gpm)	- Note: With maximum adjustment setting and with inlet pressure of 241 bar (3500 psi)

Temperature Ratings

Operating fluid temperature	-40 to 100 °C (-40 to 212 °F)	- Note: With buna N seals
	-26 to 204 °C (-15 to 400 °F)	- Note: With fluorocarbon seals
	-54 to 107 °C (-54 to 225 °F)	- Note: With polyurethane seals
Storage temperature	-40 to 70 °C (-40 to 160 °F)	
Ambient temperature	-40 to 70 °C (-40 to 160 °F)	

Operating Parameters

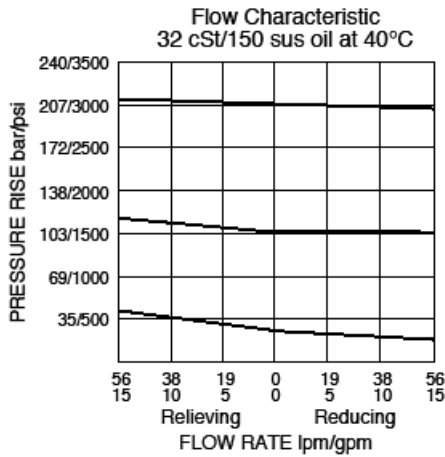
Fluids	Mineral based or synthetic with lubricating properties
Fluid viscosity range	7.4 to 420 cSt
Maximum operating contamination level	18/16/13 per ISO 4406 (tank pressure is additive to regulated pressure)

Properties

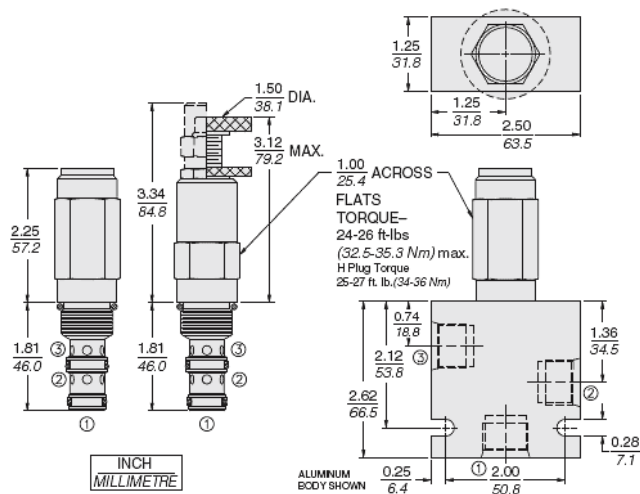
Unit weight	0.26 kg (0.57 lb)	- Note: A
	0.28 kg (0.62 lb)	- Note: B
	0.30 kg (0.67 lb)	- Note: C I
	0.25 kg (0.55 lb)	- Note: F h
	165 cm ² (25.5 in ²)	- Note: A b c l
Internal wetted surface area	179 cm ² (25.7 in ²)	- Note: F h



Performance



Dimensions



Materials

Materials

Cartridge: Weight: 0.27 kg (0.60 lb); Steel with hardened work surfaces. Zinc-plated exposed surfaces; Buna N O-rings and polyester elastomer back-ups standard. Anodized aluminum knobs and caps.

Standard Ported Body: Weight: 0.36 kg (0.80 lb); Anodized high-strength 6061 T6 aluminum alloy, rated to 207 bar (3000 psi); Ductile iron bodies available; dimensions may differ.

Adjustment Option Details: See [adjustment options](#)

Installation Specifications

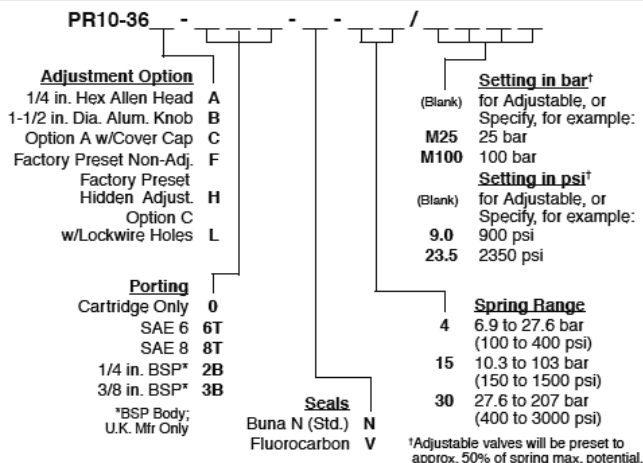
Cavity	VC10-3
Cartridge installation torque	33.9 to 36.7 N-m (25 to 27 ft-lb) 67.8 N-m (50 ft-lb)
H style plug torque	33.9 N-m (25 ft-lb)
Orientation restriction	None

Accessories

Seal kit	SK10-3X-BM	- Note: X=seal option
Housings		



Order Code



POSITION	CODE	DESCRIPTION
		PR10-36FG-H-J-R/S
F		Adjustment Option
F	A	1/4" Hex Allen Head
F	B	1-1/2" Diameter Aluminum Knob with Aluminum Lock Knob
F	C	1/4" Hex Allen Head with Cover Cap
F	F	Factory Preset Non-Adjustable
F	H	Factory Preset Hidden Adjustment
F	L	1/4" Hex Allen Head with Cover Cap and Lockwire Holes
G		Screen
G	BLANK	NONE
G	S	60 Mesh Screen
H		Line Body
H	0	No Body
H	6T	Aluminum SAE 6
H	8T	Aluminum SAE 8
H	6TD	Ductile Iron SAE 6
H	8TD	Ductile Iron SAE 8
H	3B	Aluminum BSPP 3/8" (3)
H	3BD	Ductile Iron BSPP 3/8" (3)
J		Seal
J	N	Buna-N
J	V	Fluorocarbon
J	P	Polyurethane
J	U	PPDI Urethane
R		Spring
R	04	6.9 to 27.6 bar (100 to 400 psi) Spring Range
R	15	10.3 to 103.4 bar (150 to 1500 psi) Spring Range
R	30	27.6 to 206.8 bar (400 to 3000 psi) Spring Range
S		Setting
S	MXXX	Spring Setting in XXX bar
S	XX	Spring Setting in XX psi (x 100)