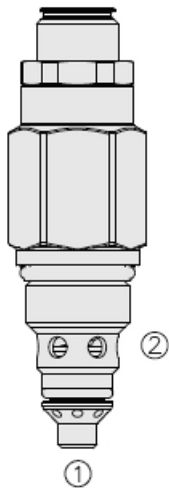




Overview

RVD58-20A-0-N-30

www: [www.salushydraulics.pl](http://www.salushydraulics.pl)  
 e-mail: [pl@salushydraulics.pl](mailto:pl@salushydraulics.pl)  
 shop/sklep: [www.salushydraulics.pl/sklep/](http://www.salushydraulics.pl/sklep/)



**Overview**

The RVD58-20 is a screw-in, cartridge style, direct acting poppet type relief valve intended for use as a pressure limiting device for common hydraulic circuit protection.

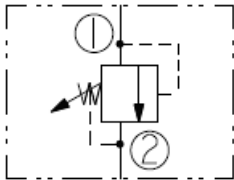
**Operation**

The RVD58-20 blocks flow from port 1 to port 2 until sufficient pressure is present at port 1 to force the poppet off its seat. the cartridge offers fast response to load changes in circuits requiring low hysteresis, low pressure rise, and low internal leakage.

**Features**

- Compact and economical
- Dynamic response to pressure surges
- Hardened poppet and cage for long life
- Optional spring ranges to 350 bar (5076 psi)
- EEmbossed QR code provides serial number
- High durometer Buna and Fluorocarbon seals
- Optional cap

Symbol



Ratings

**Pressure Ratings**

Pressure rating	350 bar (5076 psi)	- <b>Note:</b> At port 1
	207 bar (3000 psi)	- <b>Note:</b> At port 2
Proof pressure	413 bar (10,000 psi)	- <b>Note:</b> Port 1
Burst pressure	1379 bar (20,000 psi)	- <b>Note:</b> Port 1
Crack pressure defined	pressure evident at at 0.95 lpm (0.25 gpm)	
Reseat pressure	Nominal 90% of crack pressure	

**Flow Ratings**

Flow rating	37.9 lpm (10 gpm)	- <b>Note:</b> Port 1 to 2 at maximum pressure
Maximum internal leakage	0.25 ml/min (5 drops)	- <b>Note:</b> at maximum pressure

**Temperature Ratings**

Operating fluid temperature	-40 to 100 °C (-40 to 212 °F)	- <b>Note:</b> With buna N seals
	-26 to 204 °C (-15 to 400 °F)	- <b>Note:</b> With fluorocarbon seals
	-54 to 107 °C (-65 to 225 °F)	- <b>Note:</b> With polyurethane seals
Ambient temperature	-40 to 70 °C (-40 to 160 °F)	
Storage temperature	-40 to 70 °C (-40 to 160 °F)	

**Environmental Ratings**

Corrosion protection	230 H salt spray per ASTMB117
----------------------	-------------------------------

Operating Parameters

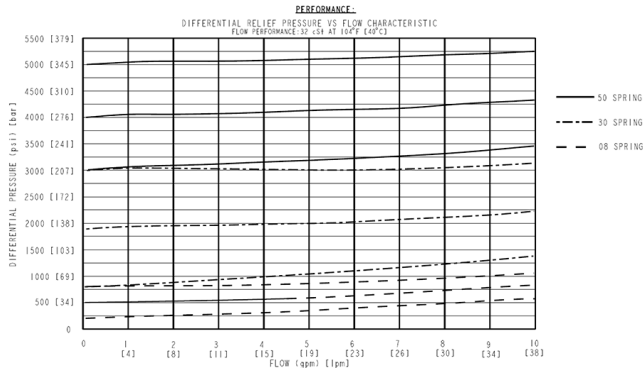
Fluids	Mineral based or synthetic with lubricating properties
Fluid viscosity range	7.4 to 420 cSt
Maximum operating contamination level	18/16/13 per ISO 4406



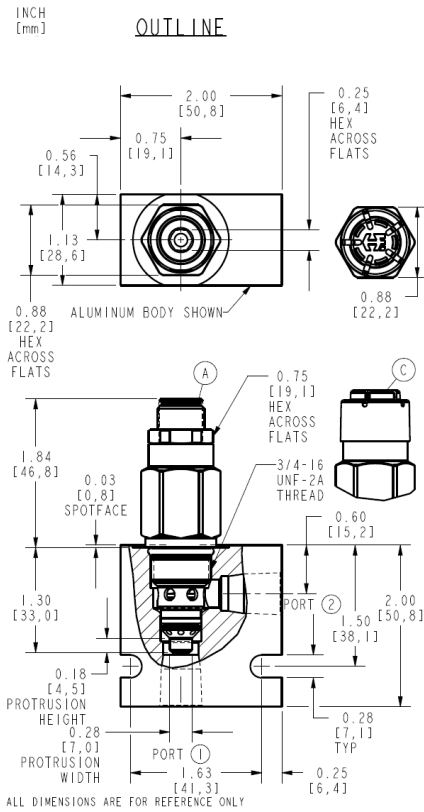
## Properties

Unit weight	0.13 kg (0.28 lb)	
Internal wetted surface area	89 cm <sup>2</sup> (113.8 in <sup>2</sup> )	
Pressure change per adjuster turn	37 bar (536 psi)	- <b>Note:</b> Spring code 30
	65.5 bar (949 psi)	- <b>Note:</b> Spring code 50
	9.5 bar (138 psi)	- <b>Note:</b> Spring code 80

## Performance



## Dimensions



## Installation Specifications

Cavity	VC08-2B
Cartridge installation torque	44.7 to 50.2 N-m (33 to 37 ft-lb)
Adjuster torque	17.6 N-m (13 ft-lb) - <b>Note:</b> Maximum torque to apply when backing out adjuster
Hex nut torque	13.6 ±1 N-m (10 ±1 ft-lb)
Orientation restriction	None



## Accessories

Seal kit	SK08-2HN-O	- <b>Note:</b> Nitrile
	SK08-2HV-O	- <b>Note:</b> Fluorocarbon
	SK08-2P-O	- <b>Note:</b> Polyurethane
Housings		
Black Tamper-proof Cap	Part No. 4618450	



Order Code

ORDERING INFORMATION:

RVD58-20X-0-X-XX/XXXX

BASE MODEL NUMBER:

ADJUSTMENT OPTIONS:

0.25 [6,4] HEX ALLEN HEAD - A  
OPTION A WITH COVER CAP - C

PORTING:

CARTRIDGE ONLY - 0

SEALS:

BUNA N - N  
FLUOROCARBON - V  
POLYURETHANE - P

SPRING CODE:

200 TO 800 psi - 08  
[13,7 TO 55,1 bar]  
800 TO 3000 psi - 30  
[55,1 TO 206,8 bar]  
3000 TO 5076 psi - 50  
[206,8 TO 350,0 bar]

PRESSURE SETTING:

FOR EXAMPLE:  
(IN psi)  
3000 psi-30.0  
(IN bar)  
210 bar-M210

POSITION	CODE	DESCRIPTION
		RVD58-20F-H-J-R/S
F		Adjustment Option
F	A	1/4 in Allen Head
H		Line Body
H	0	No Body
H	6T	Aluminum SAE 6
H	8T	Aluminum SAE 8
H	8TD	Ductile Iron SAE 8
H	3B	Aluminum BSPP 3/8" (3)
H	3BD	Ductile Iron BSPP 3/8" (3)
J		Seal
J	N	Buna-N
J	V	Fluorocarbon
J	P	Polyurethane
R		Spring
R	8	14 to 55 bar (200 to 800 psi) Spring Range
R	30	55 to 207 bar (800 to 3000 psi) Spring Range
R	50	207 to 350 bar (3000 to 5075 psi) Spring Range
S		Setting
S	MXXX	Spring Setting in XXX bar
S	XX	Spring Setting in XX psi (x 100)