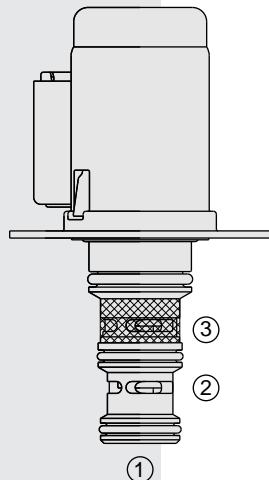


SV98-T39 Spool, 3-Way, 2-Position, Drop-In-Style



DESCRIPTION

An economical drop-in-style, direct-acting, balanced spool, two-position, three-way, directional control valve. It is well suited for use in specialized low-pressure pilot systems or power shift transmission control.

OPERATION

When de-energized, the **SV98-T39** allows flow from (2) to (1), while blocking flow at (3). When energized, the cartridge's spool shifts to open from (3) to (2), while blocking flow out (1). Pressure at (1) (tank) should not exceed 3.4 bar (50 psi).

The coil is an integral part of the valve and is not serviceable.

FEATURES

- Economical drop-in style.
- Integral waterproof coil standard.
See page 3.400.1 for a description of tests conducted to verify coil waterproofing.
- 12 or 24 VDC coils.
- Several push-on termination options.

RATINGS

Operating Pressure: 45 bar (650 psi)

Flow: 30 lpm (8 gpm)

Internal Leakage: 60 ml/minute (3.7 cu. in./minute)

Temperature: -40 to 120°C

Coil Duty Rating: Continuous from 85% to 115% of nominal voltage

Response Time: First indication of change of state with 100% voltage and flow rating: Pull-in: 50 ms; Drop-out: 30 ms.

Initial Coil Current Draw at 20°C: 1.68 amps at 12 VDC

Minimum Pull-in Voltage: 85% of nominal at 30 bar (435 psi)

Filtration: See page 9.010.1

Fluids: Mineral-based or synthetics with lubricating properties at viscosities of 7.4 to 420 cSt (50 to 2000 sus); See Temperature and Oil Viscosity, page 9.060.1

Installation: Flange Mount

Flange Mounting Screws: M5 x 8; Part No. 4000039 (not provided with valve)

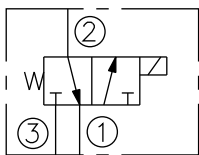
Cavity: VC-T001; See page 9.111.1

Cavity Tool: CT-T001R0-x-G; See page 8.600.1

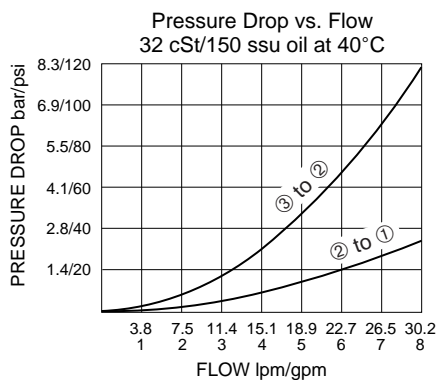
Seal Kit: SK98-T39X-000; See page 8.650.1

SYMBOLS

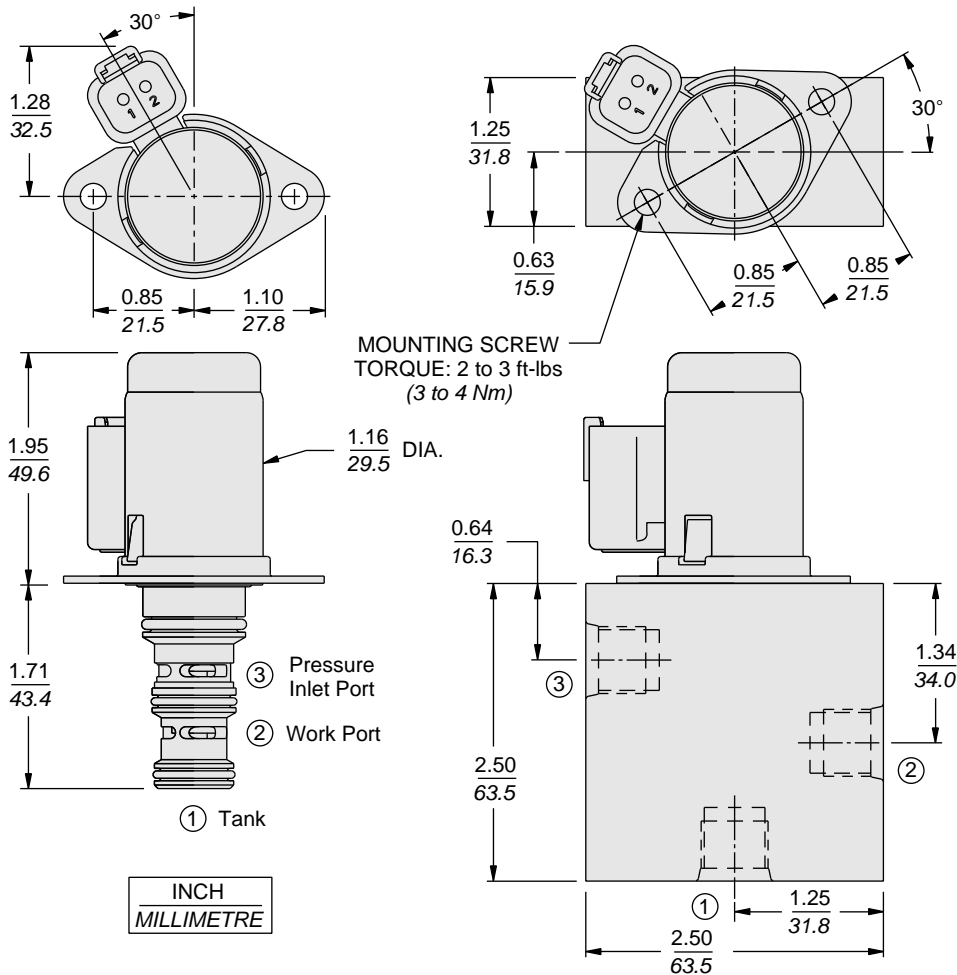
USAS/ISO:



PERFORMANCE (Cartridge Only)



DIMENSIONS



MATERIALS

Cartridge including Coil: Weight: 0.23 kg. (0.50 lbs.) Steel with hardened work surfaces. Zinc-Nickel plated exposed surfaces. HNBR O-rings standard. Coil is encapsulated, class H high-temperature magnetwire, with zinc-nickel plated shell.

Standard Ported Test Body:

Weight: 0.11 kg. (0.25 lbs.) Anodized high-strength 6061 T6 aluminum alloy, rated to 207 bar (3000 psi). See page 8.010.1.

Mounting Screws: Must be ordered separately. Part No. 4000039

TO ORDER

SV98-T39

Option
None (Blank)
233µ screen on inlet port **S**

Porting
Cartridge Only **0**
SAE 6 **6T**

Seals
Hydrogenated Nitrile (HNBR) **N**

Termination
DJ Amp Junior Timer
Y2A Metri-Pack® 150.2A
DR Deutsch DT04-2P

Voltage
12 12 VDC
24 24 VDC

Coils with internal diode are available. Consult factory.