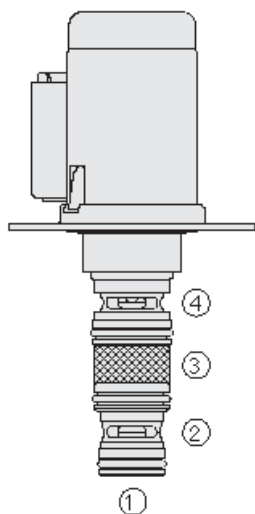




Overview



SV98-T40S-0-N-24DRZ

www: www.salushydraulics.pl
 e-mail: pl@salushydraulics.pl
 shop/sklep: www.salushydraulics.pl/sklep/

Description

This valve is a direct-acting, spool-type, 2-position, 4-way directional control valve. It is a drop-in, flange mounted, cartridge type valve for use with general purpose hydraulic fluids. Pressure at the tank port (port 1) should not exceed 50 psi [3.4 bar] for proper valve function. The coil is an integral part of the valve and is not serviceable

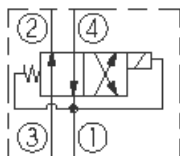
Operation

When de-energized, the SV98-T40 allows flow from port 3 to port 2 and from port 4 to port 1. When energized, the cartridge spool shifts to allow flow from port 3 to port 4 and from port 2 to port 1.

Features

- Economical drop-in style.
- Integral waterproof coil standard; see page 3.400.1_pdf for a description
- of tests conducted to verify coil waterproofing.
- 12 VDC or 24 VDC coils.
- Several push-on termination options.

Symbol



Ratings

Pressure Ratings

Pressure rating 30 bar (435 psi)

Flow Ratings

Flow rating 30 lpm (8 gpm)

Maximum internal leakage 70 ml/min (4.3 in³/min) - **Note:** Max from inlet to tank at and 30 bar (435 psi) 40 °C (248 °F)

Temperature Ratings

Operating fluid temperature -40 to 149 °C (-40 to 300 °F) - **Note:** HNBR seals

Storage temperature -40 to 70 °C (-40 to 160 °F)

Ambient temperature -40 to 90 °C (-40 to 194 °F)

Other Ratings

Corrosion protection 960 hour Salt-spray

Environmental rating IP69K - **Note:** Deutsch and Metri-pack

IP65 - **Note:** Amp

Response 50 ms - **Note:** First indication of change of state with 100% voltage and flow rating. Pull-in.

30 ms - **Note:** First indication of change of state with 100% voltage and flow rating. Drop-out.

Minimum pull-in voltage 80% of nominal voltage - **Note:** At 30 bar (435 psi), at 90 °C (194 °F)

Operating Parameters

Fluids Mineral based or synthetic hydraulic fluid with lubricating properties.

Fluid viscosity range 7.4 to 420 cSt

Maximum operating contamination level 20/18/14 per ISO4406



Properties

Unit weight	0.26 kg (0.57 lb)	- Note: Including coil
Internal wetted surface area	180.13 cm ² (27.92 in ²)	

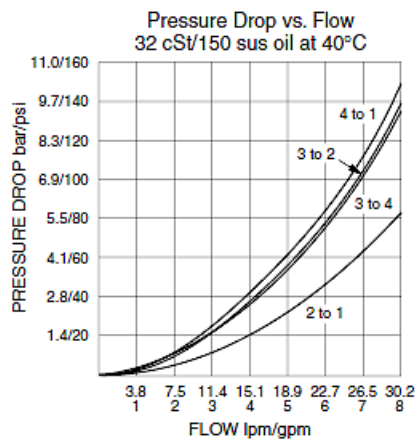
Electrical Parameters

Valve inductance	92 mH	- Note: 12 V coil
	276 mH	- Note: 24 V coil

Materials

Cartridge	Steel with hardened work surfaces, zinc plated exposed surfaces
O-rings	HNBR
Coil	Coil is encapsulated, class h high temperature magnetic wire, shell is zinc nickel plated
Standard ported body	Anodized high strength 6061 t6 aluminum alloy

Performance



Dimensions

