



**Overview**

TS10-26A-0-N-0

www: [www.salushydraulics.pl](http://www.salushydraulics.pl)  
 e-mail: [pl@salushydraulics.pl](mailto:pl@salushydraulics.pl)  
 shop/sklep: [www.salushydraulics.pl/sklep/](http://www.salushydraulics.pl/sklep/)

**Description**

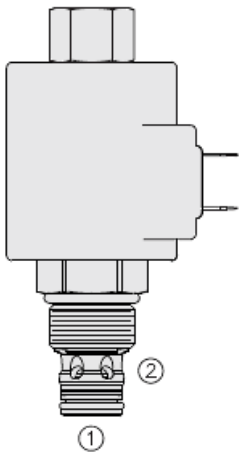
The TS10-26X is a screw-in, cartridge style, pilot-operated, spool-type, relief valve which CAN be infinitely adjusted across a prescribed range using a variable electric current. The regulated pressure is proportional to the input electrical current

**Operation**

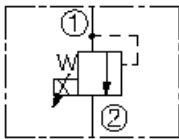
The TS10-26X blocks flow from port 1 to port 2 until sufficient pressure is present at port 1 to open the pilot section by offsetting the electrically induced solenoid force. With no current applied, the valve will relieve at approximately 100 psi [6,9 bar]

**Features**

- o 12 and 24 volt coils standard.
- o Optional waterproof E-Coils rated up to IP69K.
- o Industry common cavity.
- o Optional manual override.



**Symbol**



**Ratings**

**Pressure Ratings**

Pressure rating	241.3 bar (3500 psi)	- Note: Port 1
	206.8 bar (3000 psi)	- Note: Port 2
Proof pressure	344.7 bar (4000 psi)	
Burst pressure	827.4 bar (12000 psi)	- Note: With coil assembled
Adjustable pressure range	6.9 to 206.8 bar (100 to 3000 psi)	- Note: Model code A
	6.9 to 158.6 bar (100 to 2300 psi)	- Note: Model code b
	6.9 to 117.2 bar (100 to 1700 psi)	- Note: Model code c

**Flow Ratings**

Flow rating	94.6 lpm (25 gpm)	- Note: At 1" P (cartridge only) port 1 to 2 (coil de-energized) 9.6 bar (190 psi)
Maximum pilot flow	0.76 lpm (0.2 gpm)	

**Temperature Ratings**

Operating fluid temperature	-40 to 100 °C (-40 to 212 °F)	- Note: With buna N seals
	-26 to 204 °C (-15 to 400 °F)	- Note: With fluorocarbon seals
	-54 to 107 °C (-65 to 225 °F)	- Note: With polyurethane seals
Storage temperature	-40 to 70 °C (-40 to 160 °F)	
Ambient temperature	-40 to 70 °C (-40 to 160 °F)	

**Other Ratings**

Corrosion protection	960 hr salt spray per ASTM b117
----------------------	---------------------------------

**Operating Parameters**

Fluids	Mineral based or synthetic with lubricating properties
Fluid viscosity range	7.4 to 420 cSt
Maximum operating contamination level	18/16/13 per ISO 4406

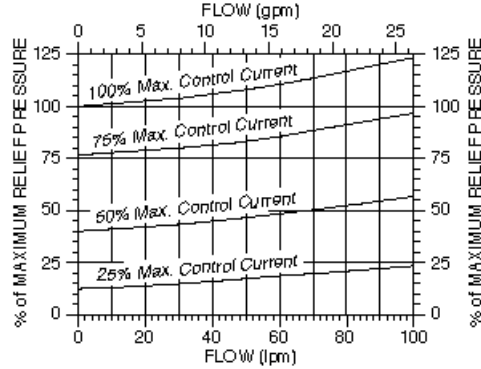
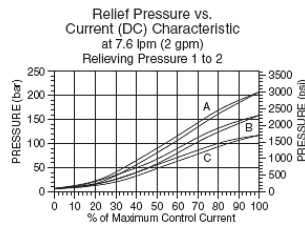
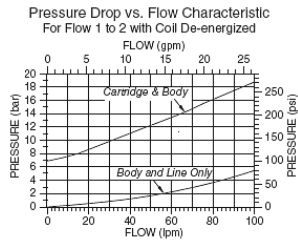


## Properties

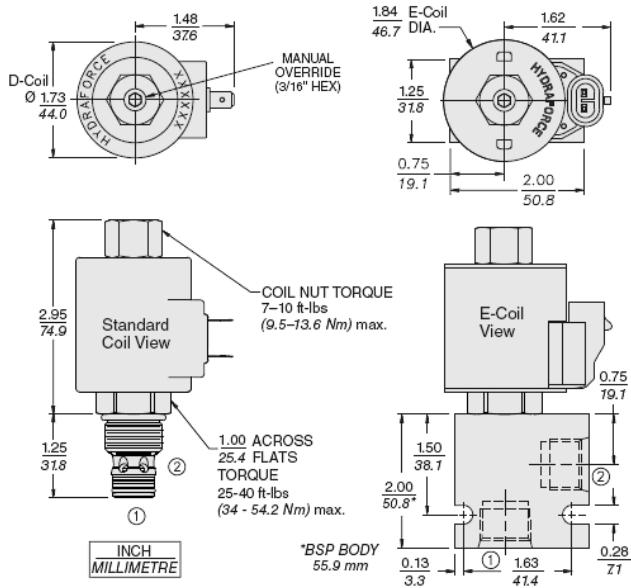
Unit weight	0.25 kg (0.55 lb)	
Internal wetted surface area	163 cm <sup>2</sup> (25.2 in <sup>2</sup> )	- Note: TS10-26X
	168 cm <sup>2</sup> (26.1 in <sup>2</sup> )	- Note: TS10-26XM

## Performance

Typical Relief Pressure vs. Flow Characteristic  
Typical Relieving Pressure ① to ②  
at Various %'s of Maximum Control Current  
Pressure Range "A" (207 bar/3000 psi); Cartridge in Body



## Dimensions



## Materials

### Materials

**Cartridge:** Weight: 0.25 kg (0.55 lb); Steel with hardened work surfaces. Zinc-plated exposed surfaces; Buna N O-rings and polyester elastomer back-ups standard.

**Standard Ported Body:** Weight: 0.16 kg (0.35 lb); Anodized high-strength 6061 T6 aluminum alloy, rated to 207 bar (3000 psi); Ductile iron bodies available; dimensions may differ.

**Standard D-Coil:** Weight each: 0.32 kg (0.7 lb); Unitized thermoplastic encapsulated, Class H high temperature magnet wire.

**E-Coil:** Weight: 0.41 kg (0.9 lb); Perfect wound, fully encapsulated with rugged external metal shell; Rated up to IP69K with integral connectors.



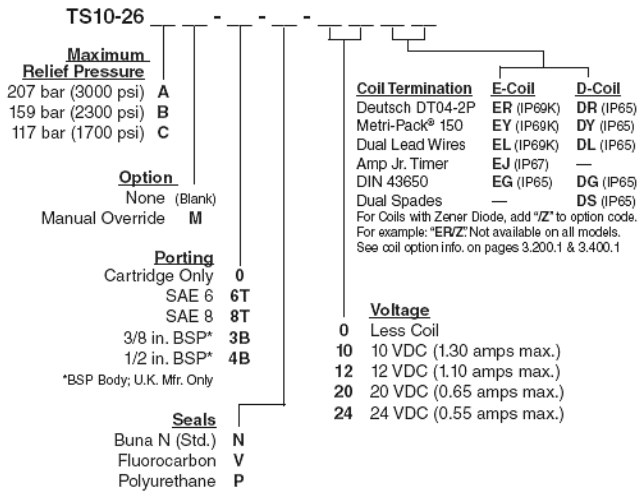
## Installation Specifications

Cavity	VC10-2
Cartridge installation torque	34 to 36.7 N-m (25 to 27 ft-lb)
Maximum allowable torque	54.2 N-m (40 ft-lb)
Coil nut torque	9.5 to 13.6 N-m (7 to 10 ft-lb)
Orientation restriction	None

## Accessories

Seal kit	SK10-2X-B	- <b>Note:</b> X = seal option
Housings		
Coils		

## Order Code



POSITION	CODE	DESCRIPTION
		TS10-26DE-H-J-L
D		Regulating Pressure Range
D	A	6.9 to 206.8 bar (100 to 3000 psi) Pressure Range
D	B	6.9 to 158.6 bar (100 to 2300 psi) Pressure Range
D	C	6.9 to 117.2 bar (100 to 1700 psi) Pressure Range
E		Manual Override
E	BLANK	NONE
E	M	Minimum Regulated Pressure Override, 3/16" Internal Hex
H		Line Body
H	0	No Body
H	6T	Aluminum SAE 6
H	8T	Aluminum SAE 8
H	6TD	Ductile Iron SAE 6
H	8TD	Ductile Iron SAE 8
H	2B	Aluminum BSPP 1/4" (2)
H	3B	Aluminum BSPP 3/8" (3)
H	4B	Aluminum BSPP 1/2" (4)
H	4BD	Ductile Iron BSPP 1/2" (4)
J		Seal
J	N	Buna-N
J	V	Fluorocarbon



POSITION	CODE	DESCRIPTION
J	P	Polyurethane
J	U	PPDI Urethane
L		Coil
L	0	No Coil
L	10DG	10 VDC, D-Coil, DIN 43650
L	10DL	10 VDC, D-Coil, Dual Lead Wires
L	10DS	10 VDC, D-Coil, Dual Spade
L	10EL	10 VDC, E-Coil, Dual Lead Wires
L	10ER	10 VDC, E-Coil, Deutsch
L	12DG	12 VDC, D-Coil, DIN 43650
L	12DL	12 VDC, D-Coil, Dual Lead Wires, 18 inches long
L	12DL/36	12 VDC, D-Coil, Dual Lead Wires, 36 inches long
L	12DL/W	12 VDC, D-Coil, Dual Lead Wires with Weatherpak
L	12DR	12 VDC, D-Coil, Deutsch
L	12DS	12 VDC, D-Coil, Dual Spade
L	12EG	12 VDC, E-Coil, DIN 43650
L	12EJ	12 VDC, E-Coil, AMP Jr.
L	12EL	12 VDC, E-Coil, Dual Lead Wires, 18 inches long
L	12EL/36	12 VDC, E-Coil, Dual Lead Wires, 36 inches long
L	12ER	12 VDC, E-Coil, Deutsch
L	12EY	12 VDC, E-Coil, Metri-Pack 150
L	20DS	20 VDC, D-Coil, Dual Spade
L	20ER	20 VDC, E-Coil, Deutsch
L	24AG	24 VDC, D-Coil, DIN 43650
L	24AP	24 VDC, D-Coil, 1/2" Conduit and Dual Lead Wires
L	24DG	24 VDC, D-Coil, DIN 43650
L	24DL	24 VDC, D-Coil, Dual Lead Wires
L	24DL/W	24 VDC, D-Coil, Dual Lead Wires with Weatherpak
L	24DP	24 VDC, D-Coil, 1/2" Conduit and Dual Lead Wires
L	24DR	24 VDC, D-Coil, Deutsch
L	24DS	24 VDC, D-Coil, Dual Spade
L	24EG	24 VDC, E-Coil, DIN 43650
L	24EJ	24 VDC, E-Coil, AMP Jr.
L	24EL	24 VDC, E-Coil, Dual Lead Wires, 18 inches long
L	24EL/36	24 VDC, E-Coil, Dual Lead Wires, 36 inches long
L	24ER	24 VDC, E-Coil, Deutsch
L	24EY	24 VDC, E-Coil, Metri-Pack 150
L	36DS	36 VDC, D-Coil, Dual Spade